
Electrical
Regulatory
Authorities
Council

Electrical Fatal Incident Data

Australia & New Zealand 2023 - 2024

This Report covers:

- Definitions
- Summary of 2023-2024 year
- Trend Analysis
- Series of graphs & tables for data supplied covering the period 1 July 2000 to 30 June 2024
 1. Regional fatalities & victims' demographics
 2. Fatalities involving network assets
 3. Fatalities involving consumer installations and equipment
 4. Tables - fatal electrical accidents since July 2000
 5. Tables - summary of electrical fatality reports 2023-24

Definitions

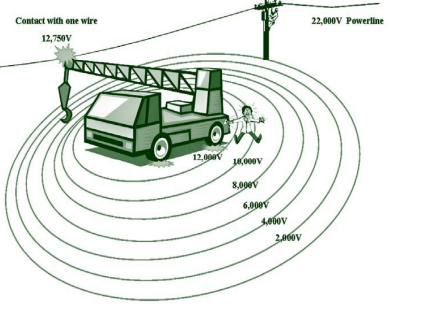

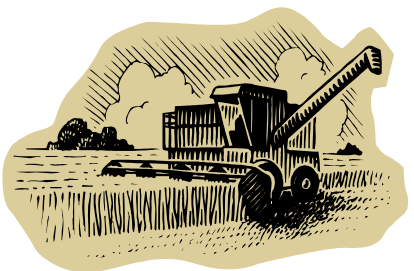
"Consumer installation"	All parts of an electrical installation past the point of supply on the consumer side.
"Distribution or supply equipment"	Equipment used in the generation, transmission, supply or distribution of electricity.
"Electrical fatal incident"	Any fatal event that results from an electrical shock, electrical burn or electrical arc burn except if linked to the initial event of a natural disaster, criminal activity or suicide.
"Electrical worker"	A person who carries out electrical work and is licensed or authorised to do so.
"General public"	A person who is not doing any work as part of his or her employment or under a contract of work, or training at the time the incident occurs
"Misuse/Interference"	To damage, mishandle or use equipment in a way that it is not intended, or for what it is designed.
"Non-electrical Worker"	A person who is in the process of carrying out their occupation and is not an electrical worker.
"Supply worker"	A person who is employed by a network operator.
"Work practice"	The process or method by which work is carried out.

Summary of 2023-2024 year

This report covers the 12-month period from 1 July 2023 to 30 June 2024. It is based on details of incidents reported to electrical safety regulators in Australia and New Zealand.

Eleven electrical deaths from ten incidents were recorded in Australia and New Zealand in 2023-24. This is equivalent to 0.34 deaths per million people (dmp) which is similar to the last year. There were 11 deaths occurred during last year (2022-2u3).

Ten of eleven deaths occurred in Australia.

	<p>There were seven distribution network related deaths caused by six electrical incidents.</p> <p>All seven fatalities were associated with overhead conductor incidents.</p>
	<p>Four deaths were caused by four incidents involving customers' installations or appliances or equipment.</p>
	<p>Of the eleven people who were electrocuted, 27% (3) were electrical workers, 37% (4) non-electrical workers and 37% (4) were the general public.</p>

Trend Analysis

Electrical fatality information from the past 24 years (2000-01 to 2023-24) has been analysed for trends and frequency.

The electrical deaths over 24 years continue to show a decrease from an average (three years) of 1.79 deaths per million people (dmp) in 2000-01 to 0.37 dmp in 2023-24. An average rate of reduction is 0.06 dmp per year.

In Australia, the reduction is from 1.87 to 0.42 (0.06 per year) dmp, while for New Zealand the reduction is from 1.30 to 0.33 (0.04 per year).

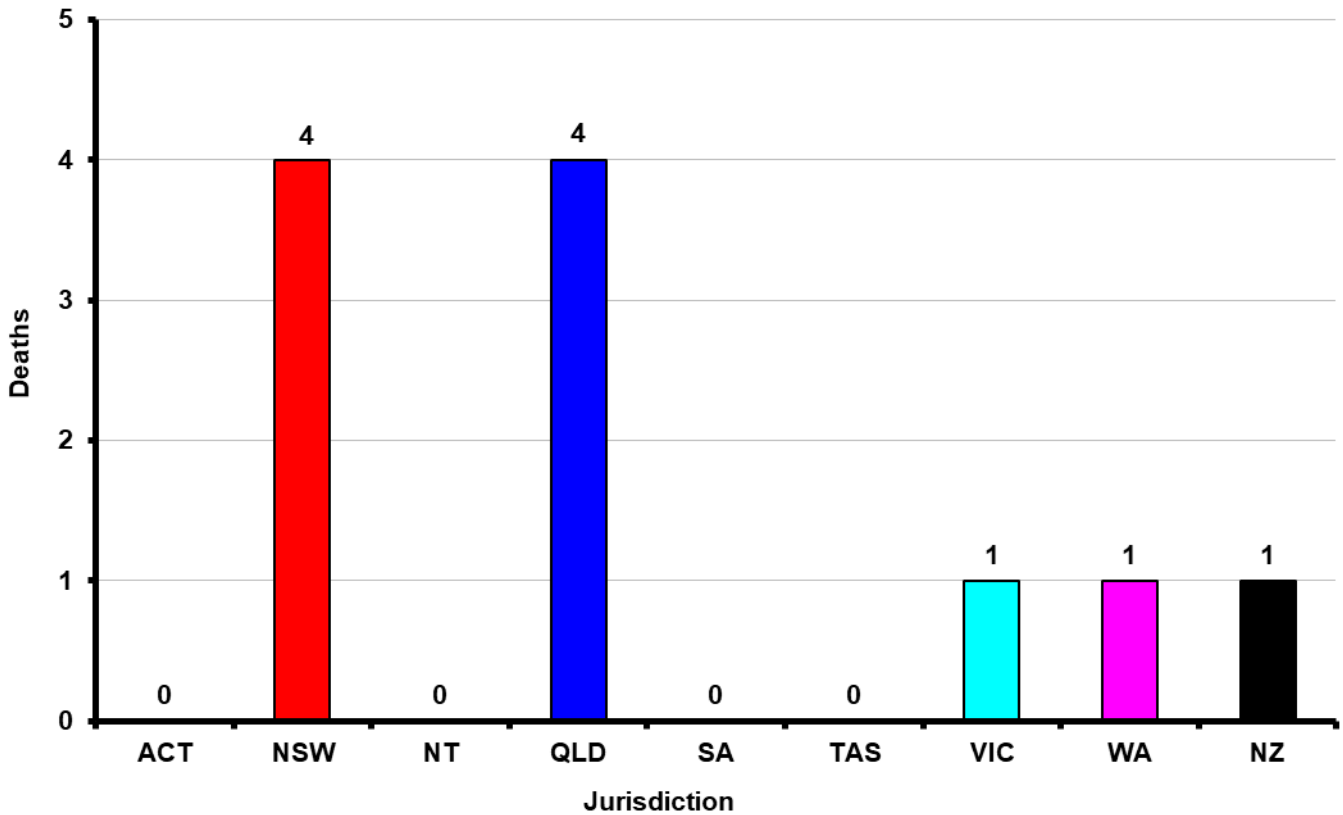
Most electrical deaths associated with electricity networks were as a result of working on or near energised overhead conductors. 92% (144 of 157) of electrical deaths associated with electricity supply networks involved overhead conductors.

Consumer appliances/equipment were involved in about twice (299) the number of deaths than the electricity supplier assets (157). Also, there was a large variation in the number of deaths involving consumer equipment from one year to the next than in deaths involving electrical supplier assets. The dmp continued to decline over the last 24 years for both consumer and supplier assets.

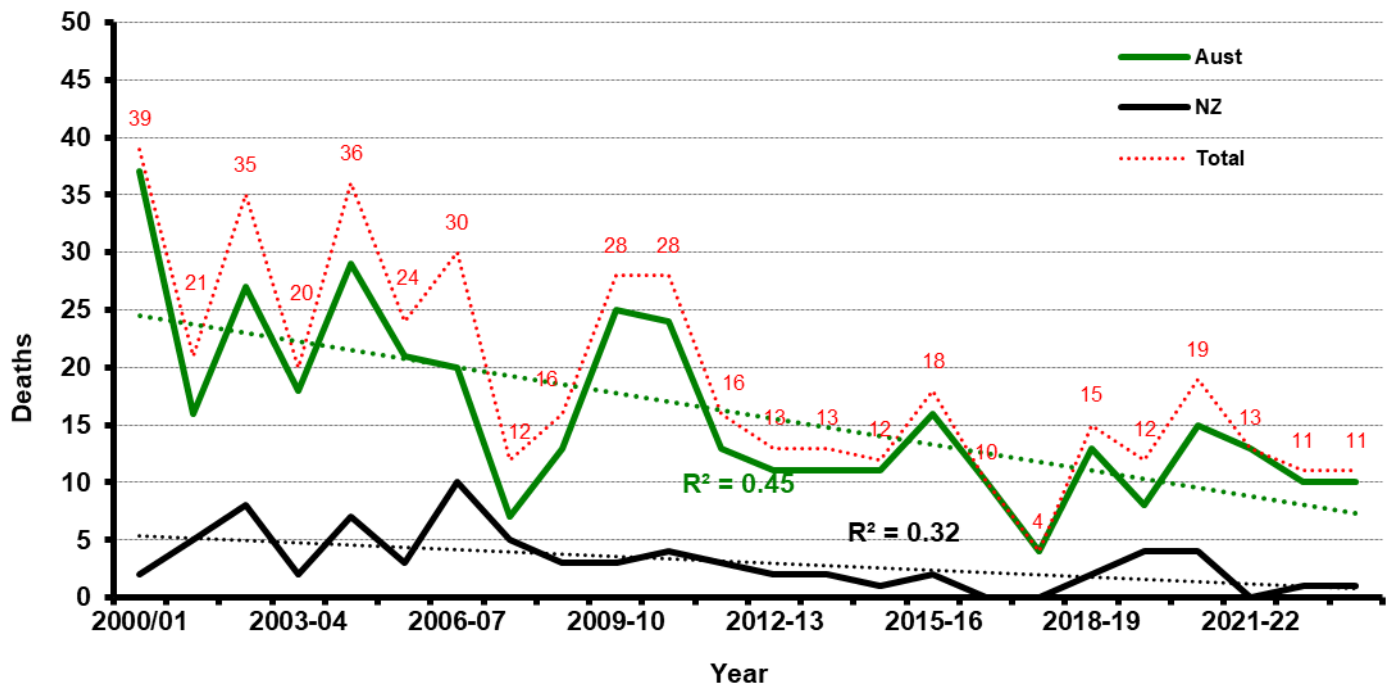
This report presents the information in a series of charts and tables.

1. Regional fatalities & victims' demographics

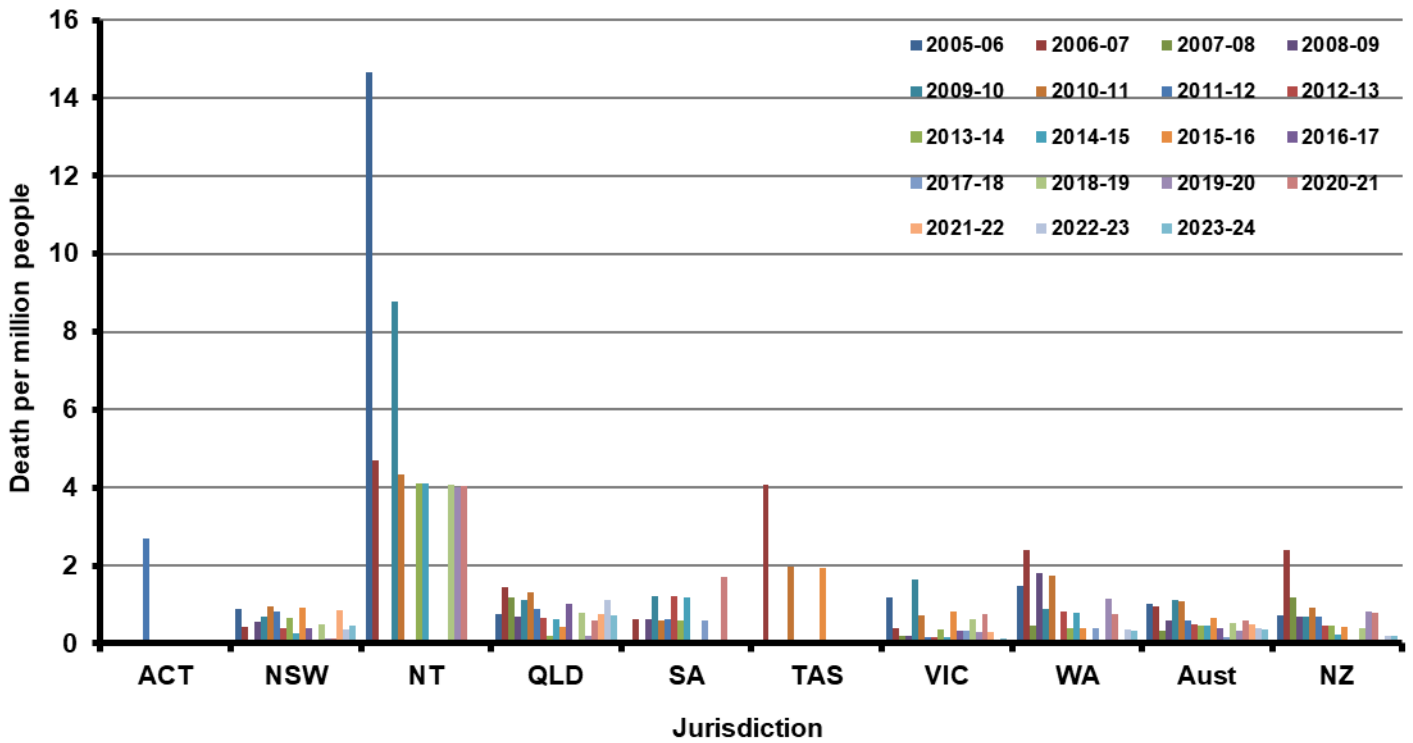
GRAPH 1.1 Electrical deaths in Australia and New Zealand – 2023-24



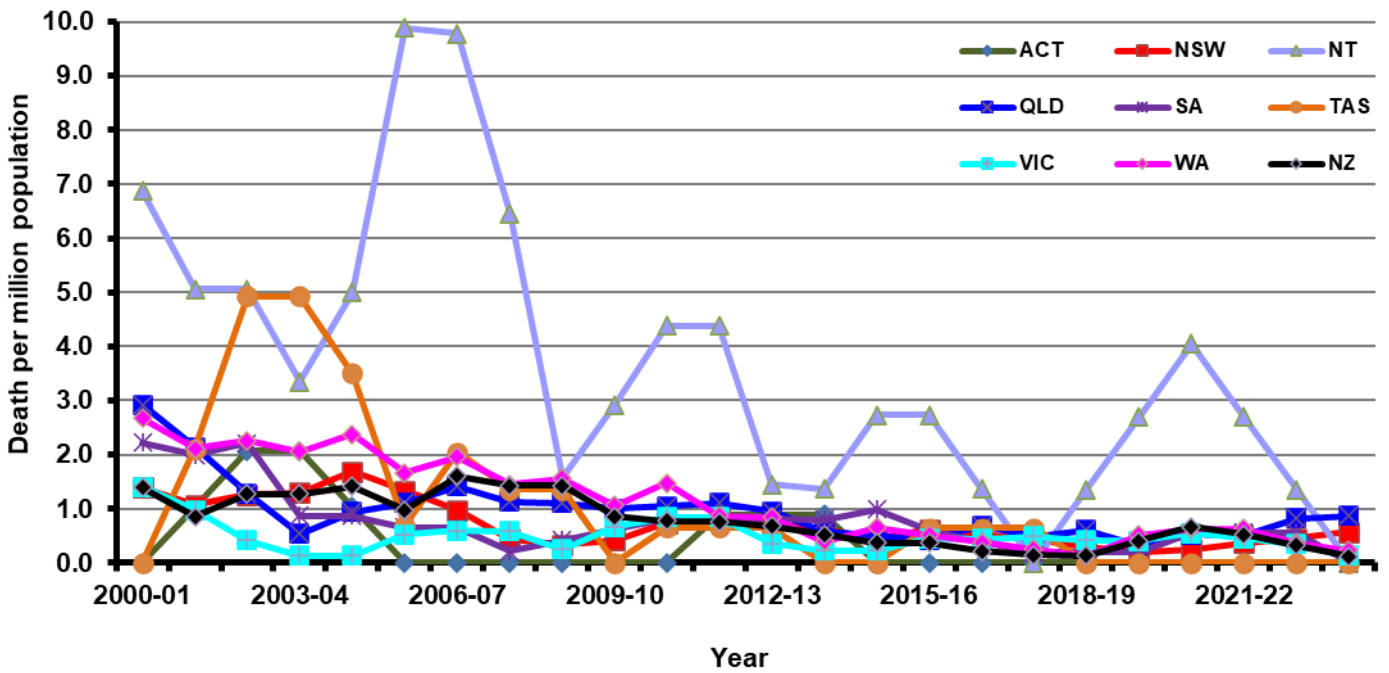
GRAPH 1.2 Number of electrical deaths in Australia and New Zealand



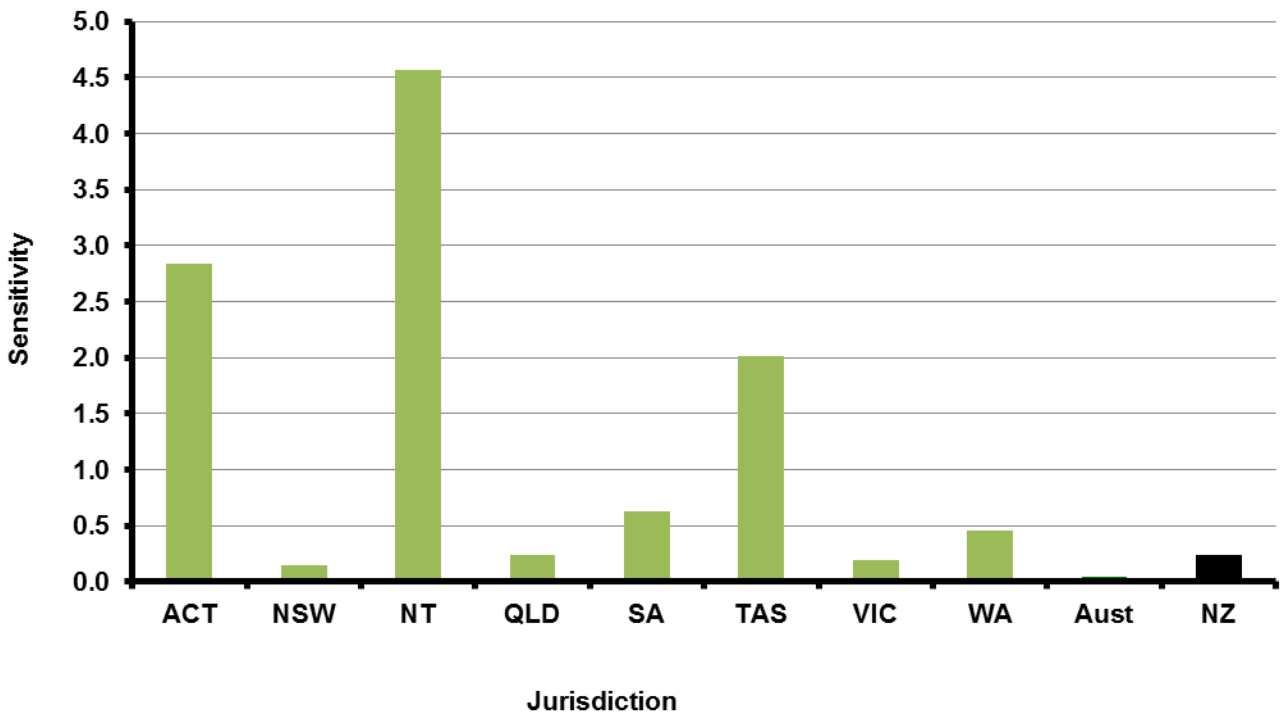
GRAPH 1.3 Electrical deaths per million people from 2005-06



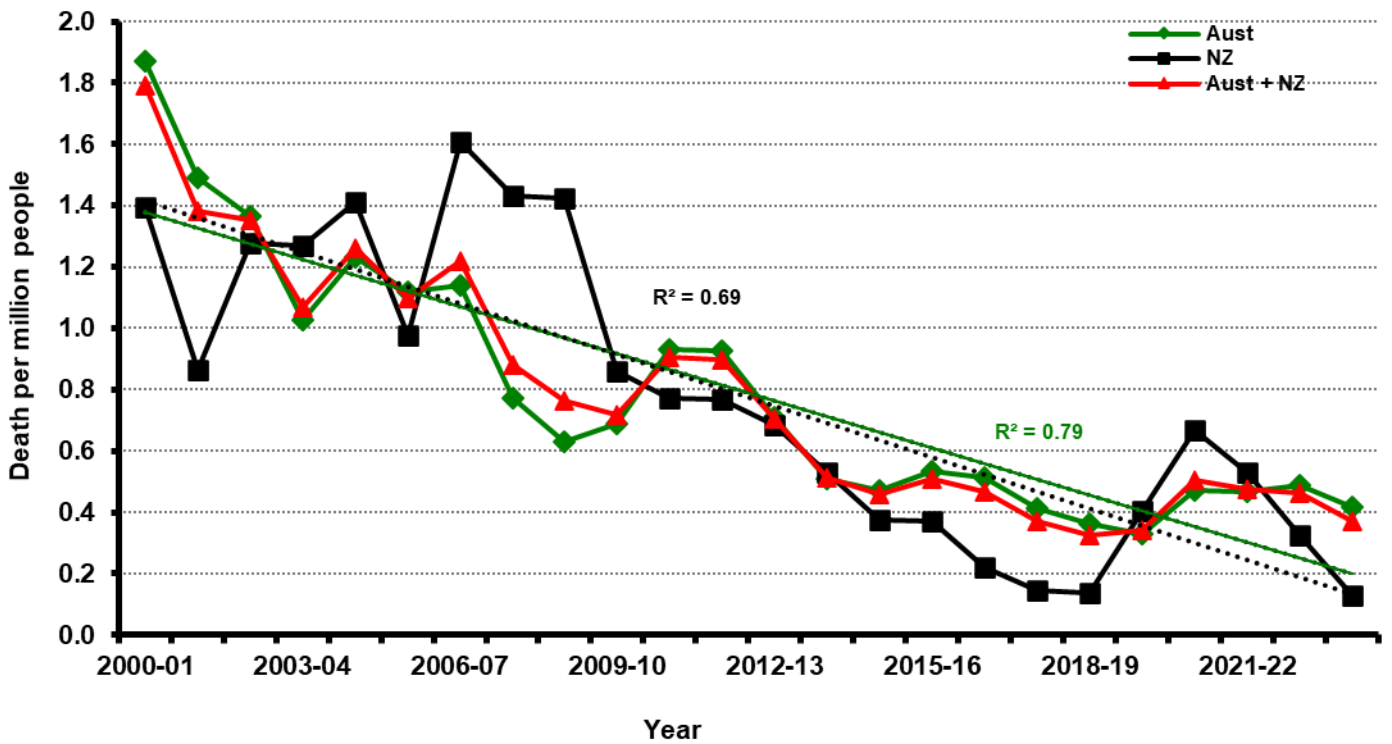
GRAPH 1.4 Trend in electrical deaths (three year moving average per million people)



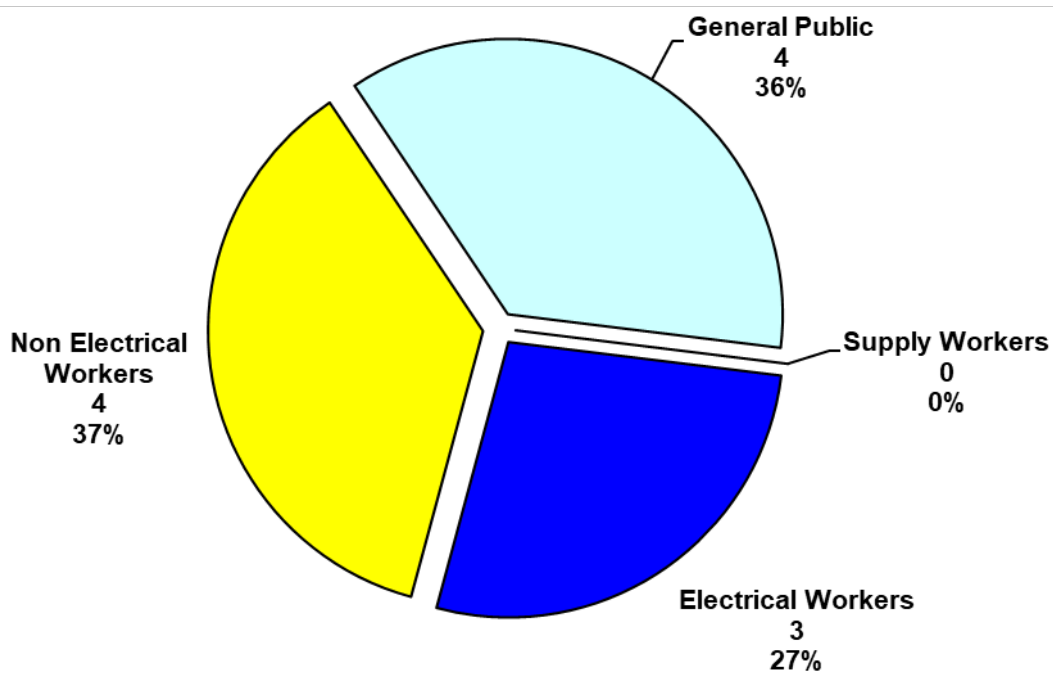
GRAPH 1.5 Sensitivity analysis for fatality rate



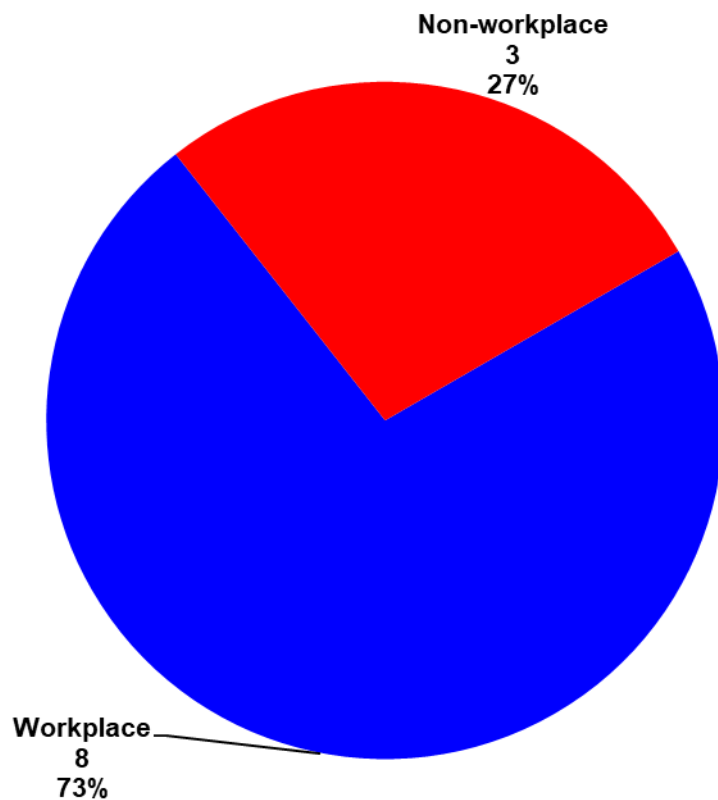
GRAPH 1.6 Trend in electrical deaths (three year moving average per million population) in Australia and New Zealand



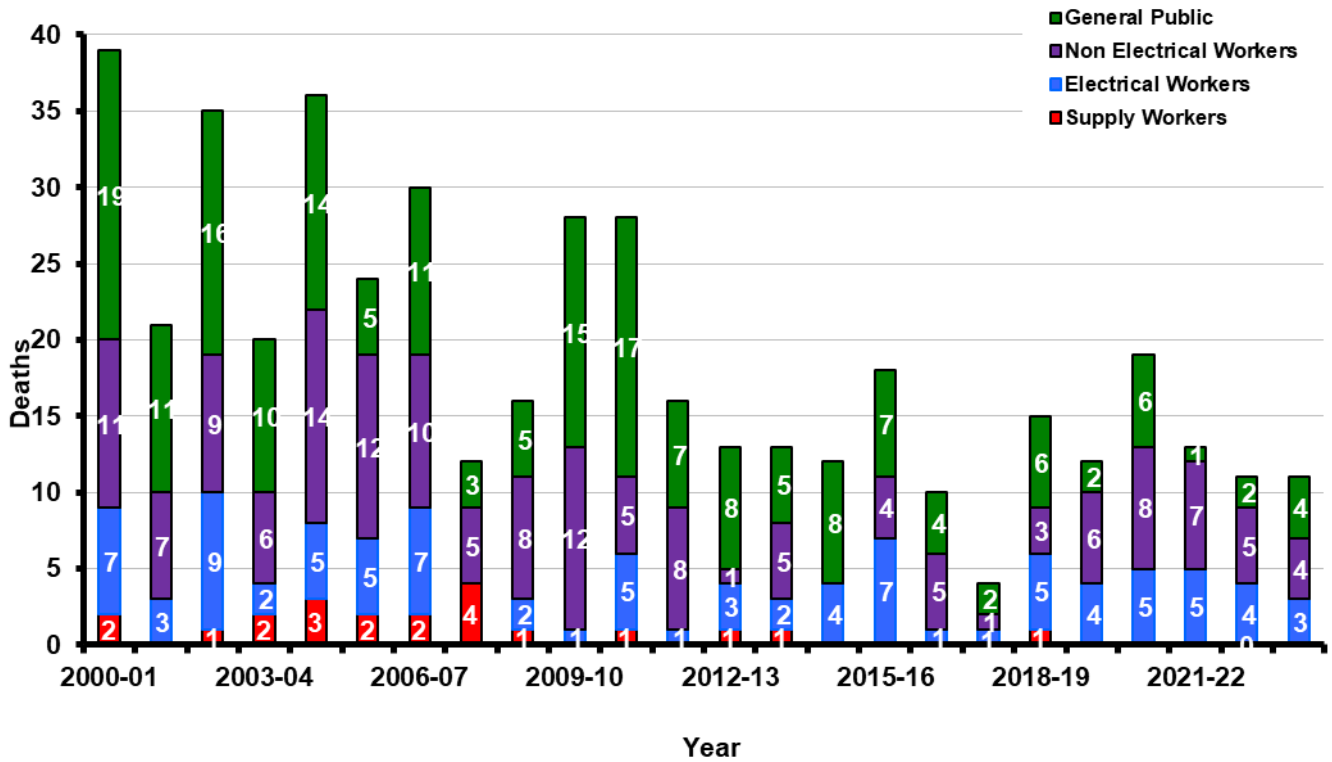
GRAPH 1.7 Australia and New Zealand victim categories – 2023-24



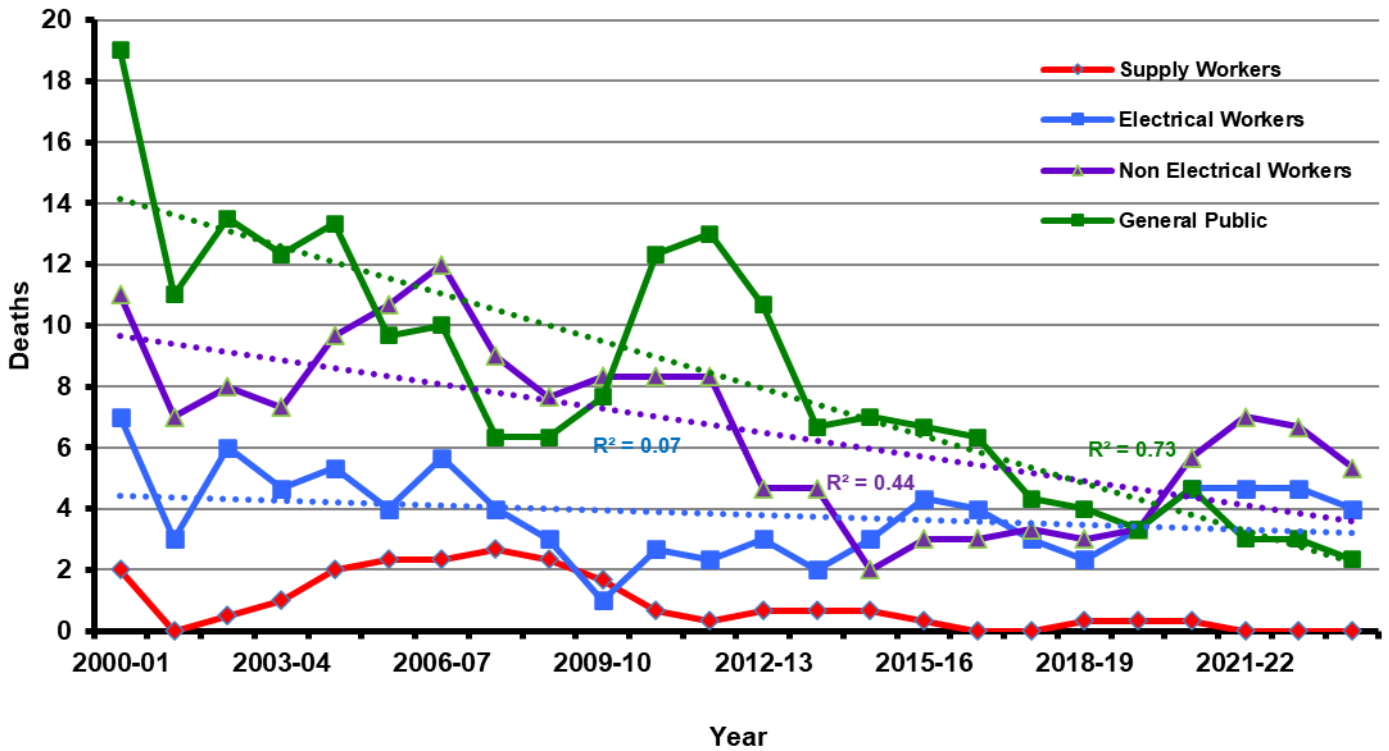
GRAPH 1.8 Electrical deaths: workplace versus non-workplace



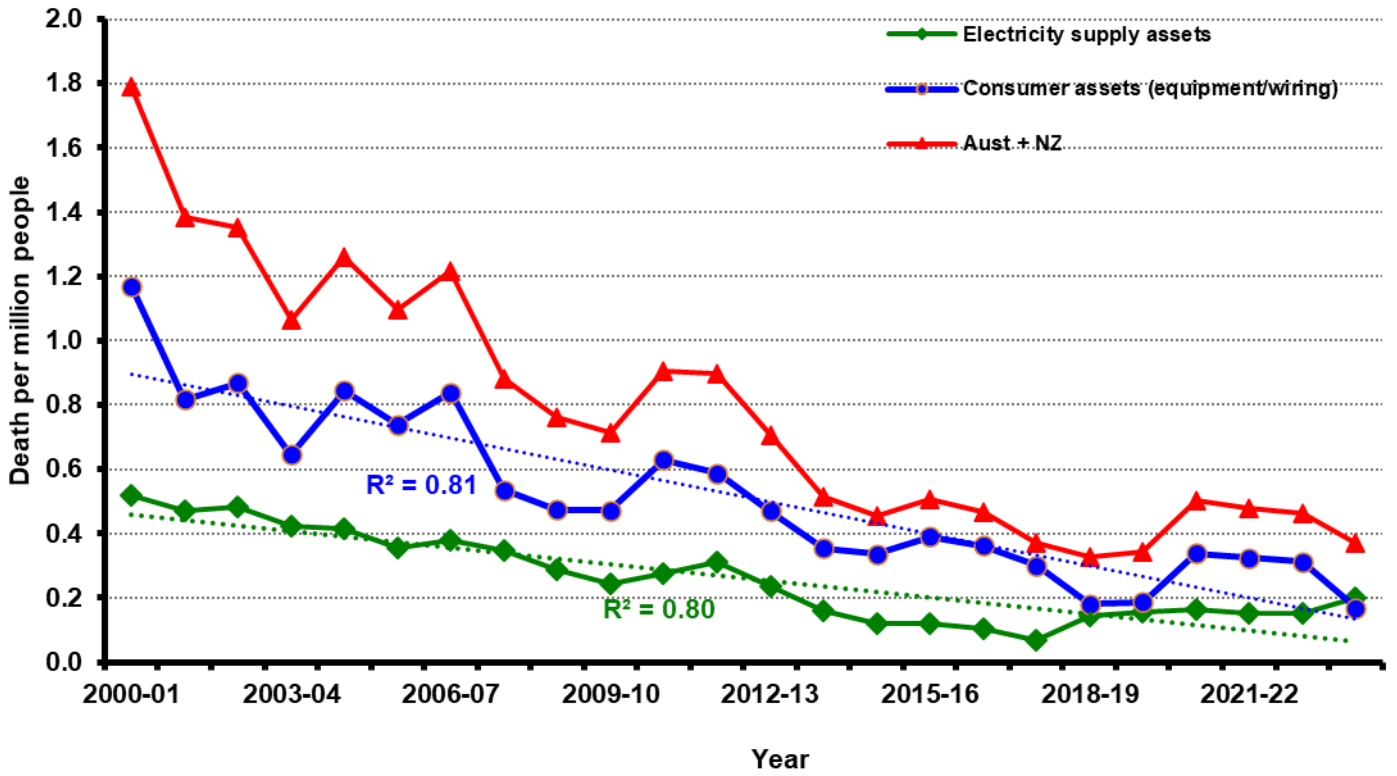
GRAPH 1.9 Electrical deaths sorted by victim categories



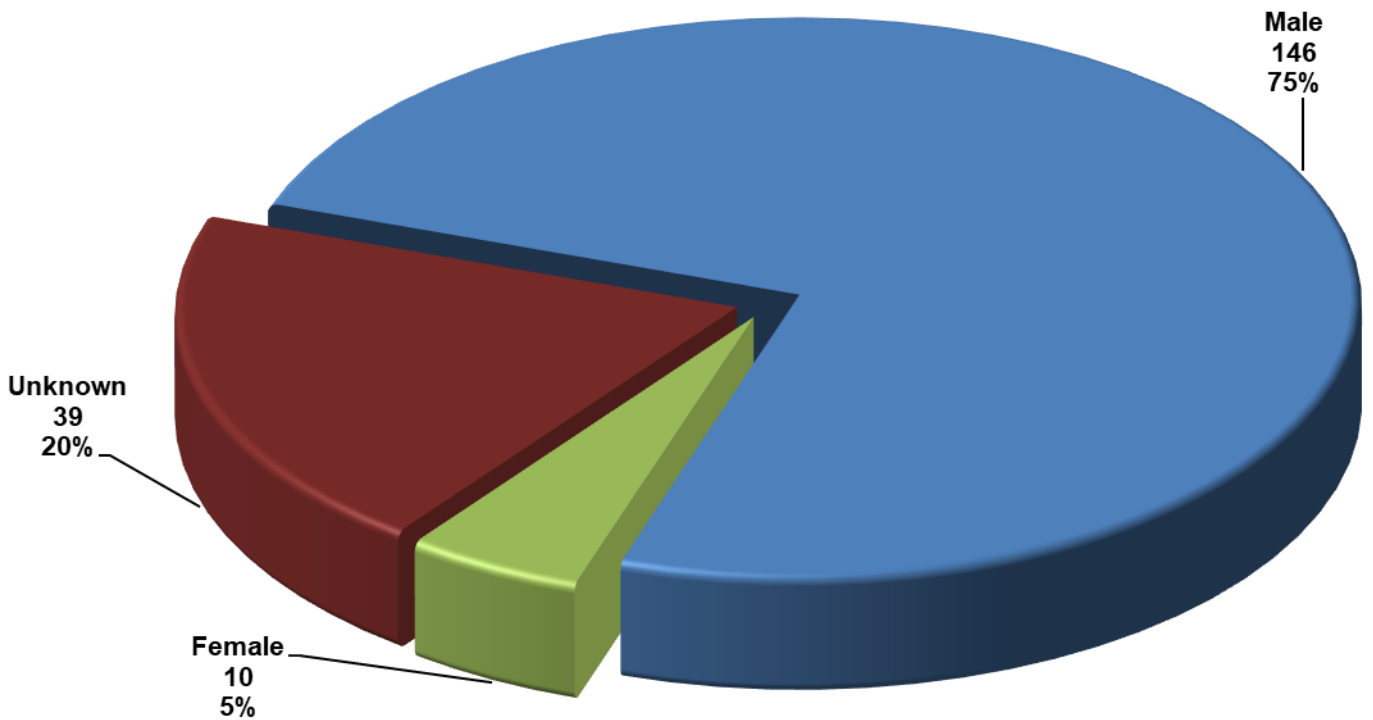
GRAPH 1.10 Trends by victim categories with three year moving average



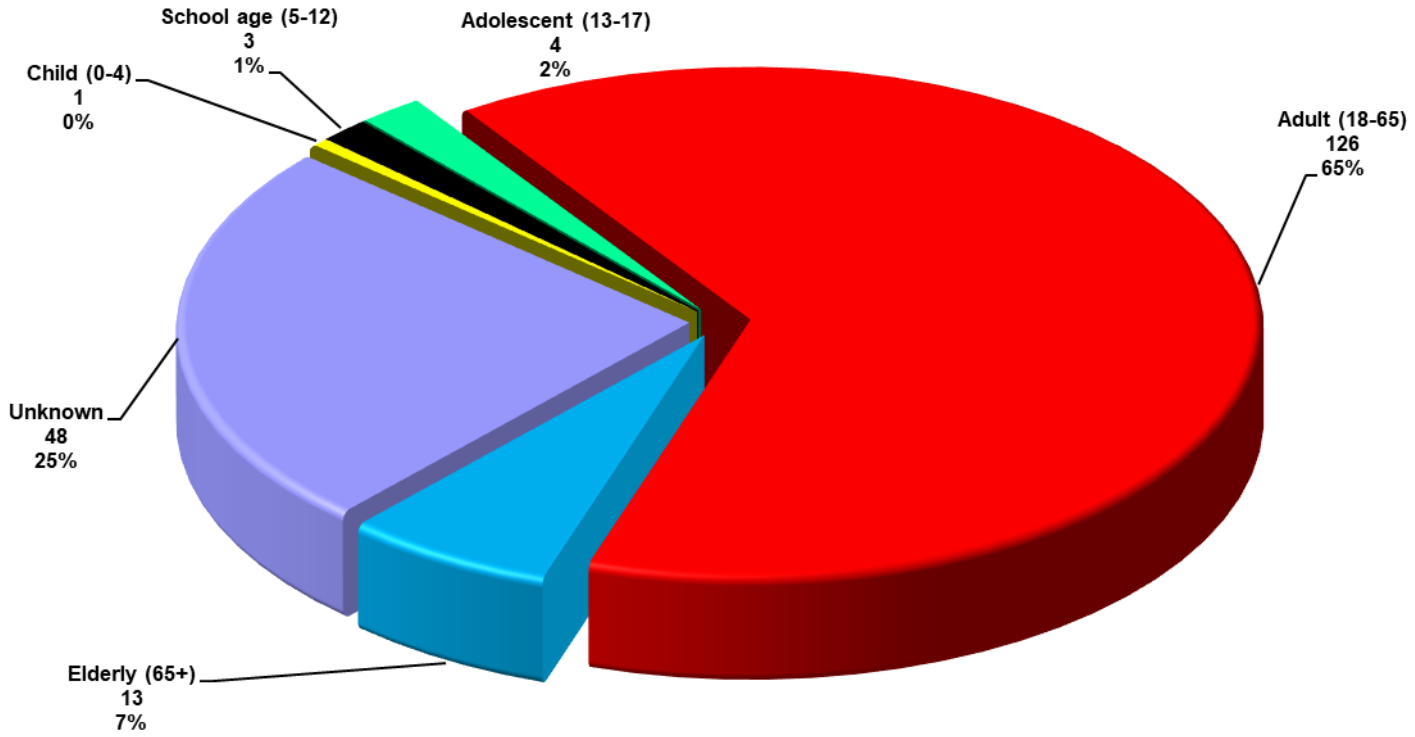
GRAPH 1.11 Trends by asset Type with three year moving average



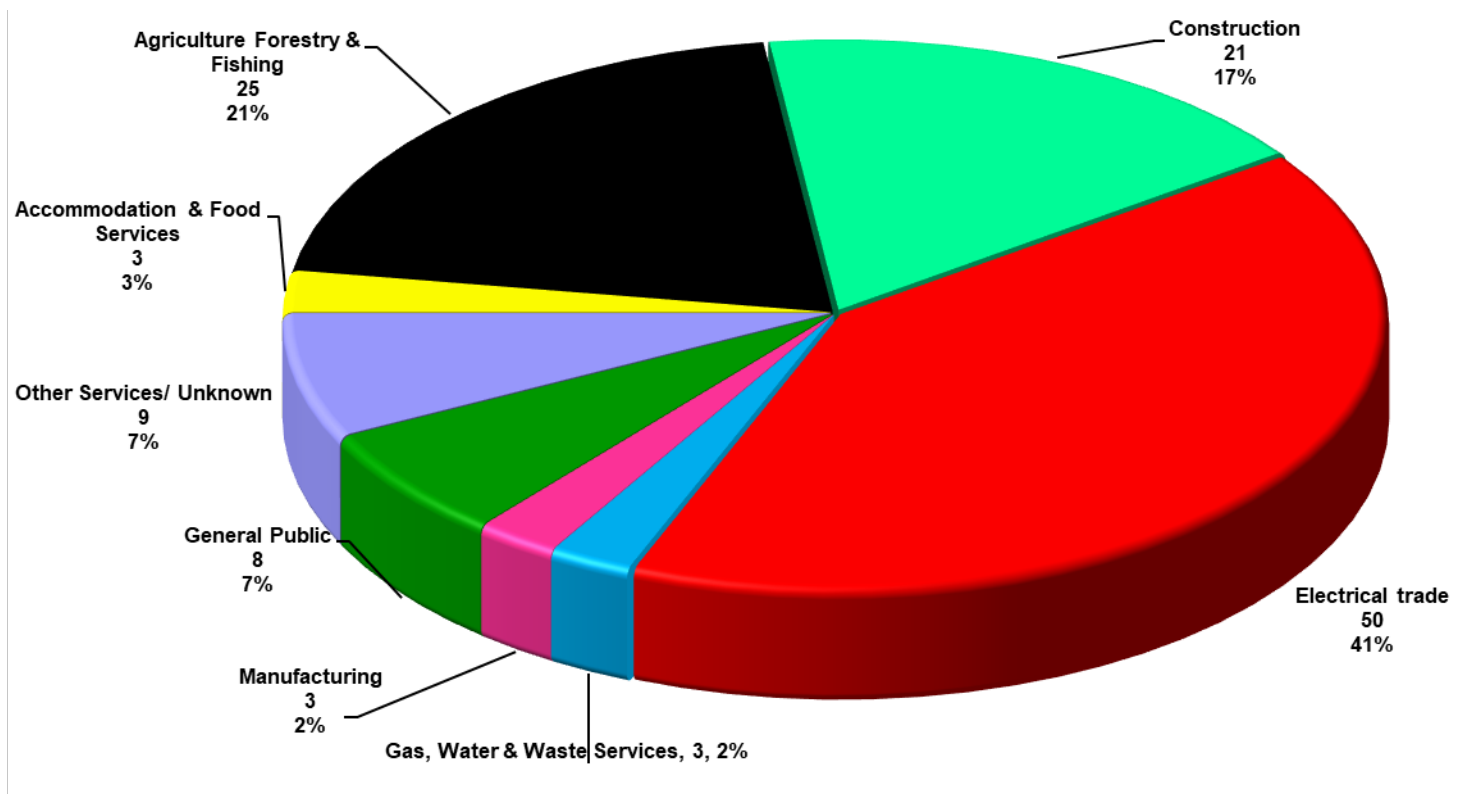
GRAPH 1.12 Victims' gender from 2010-11



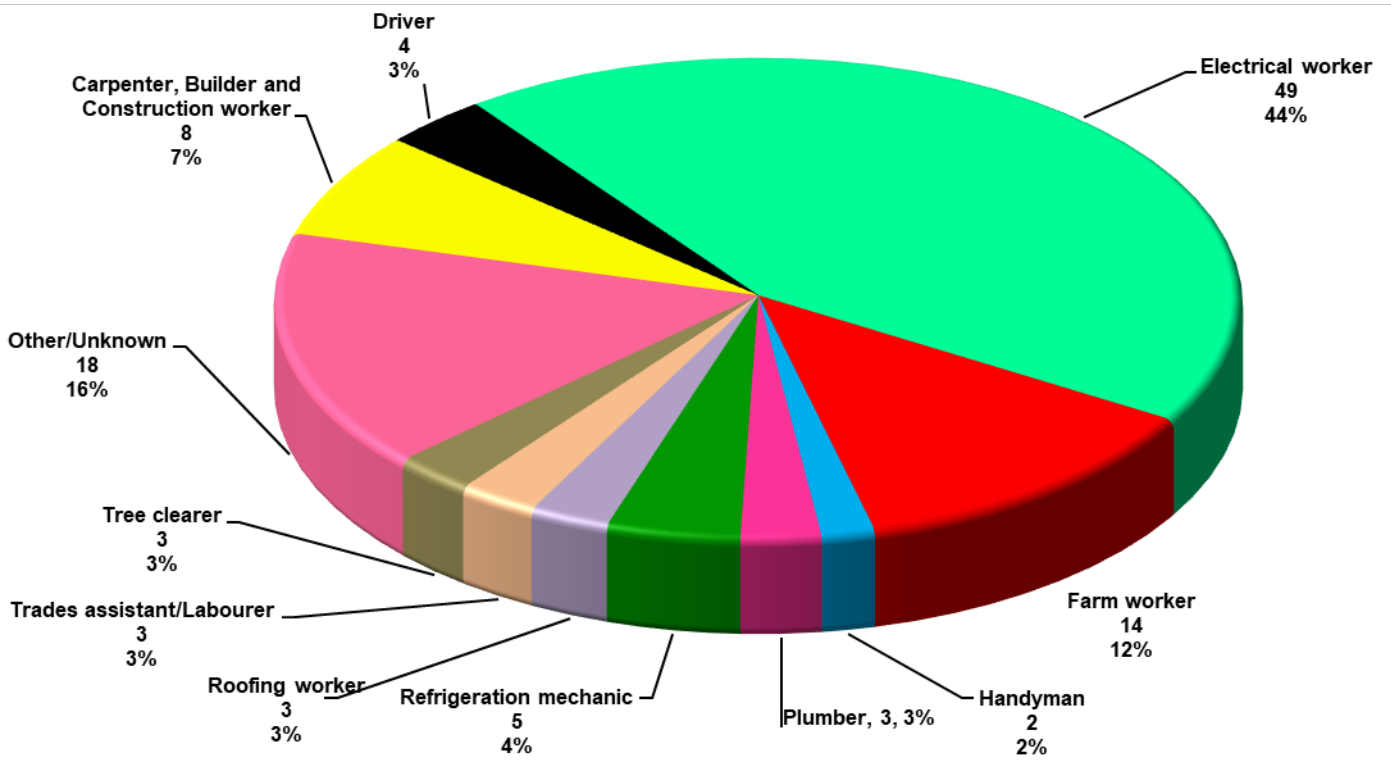
GRAPH 1.13 Victims' age from 2010-11



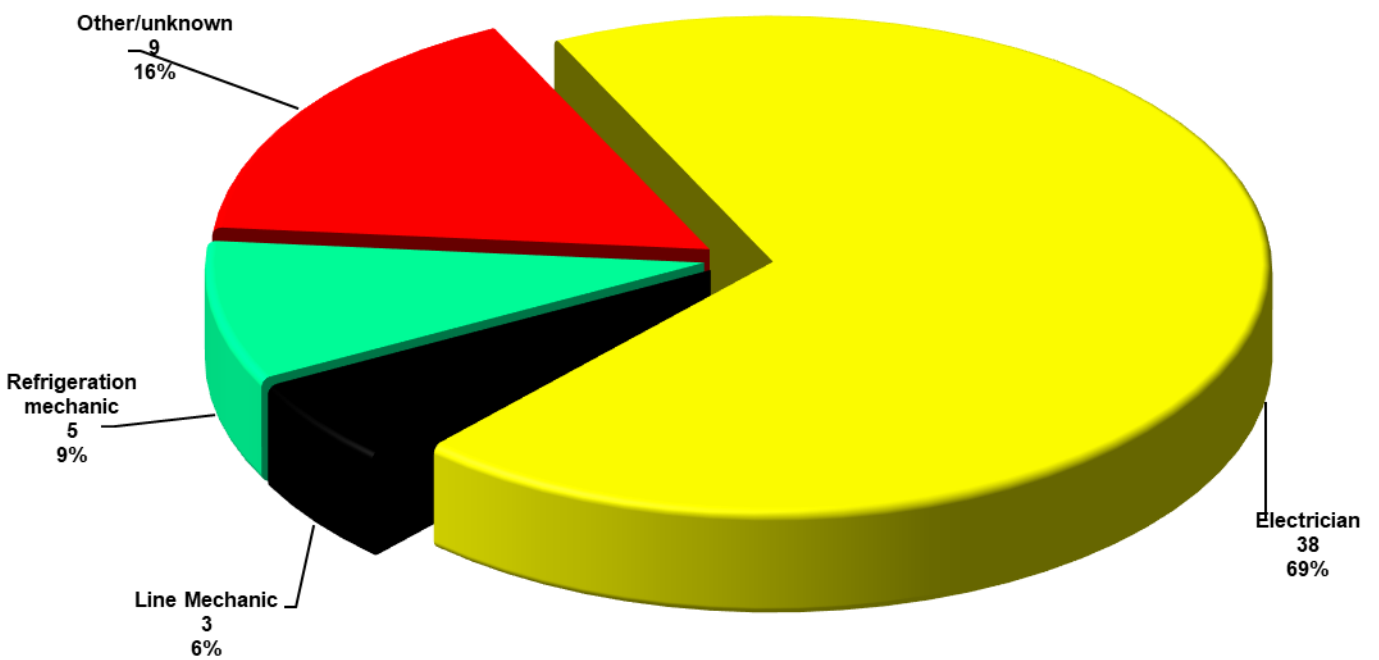
GRAPH 1.14 In industry Victim was employed from 2010-11



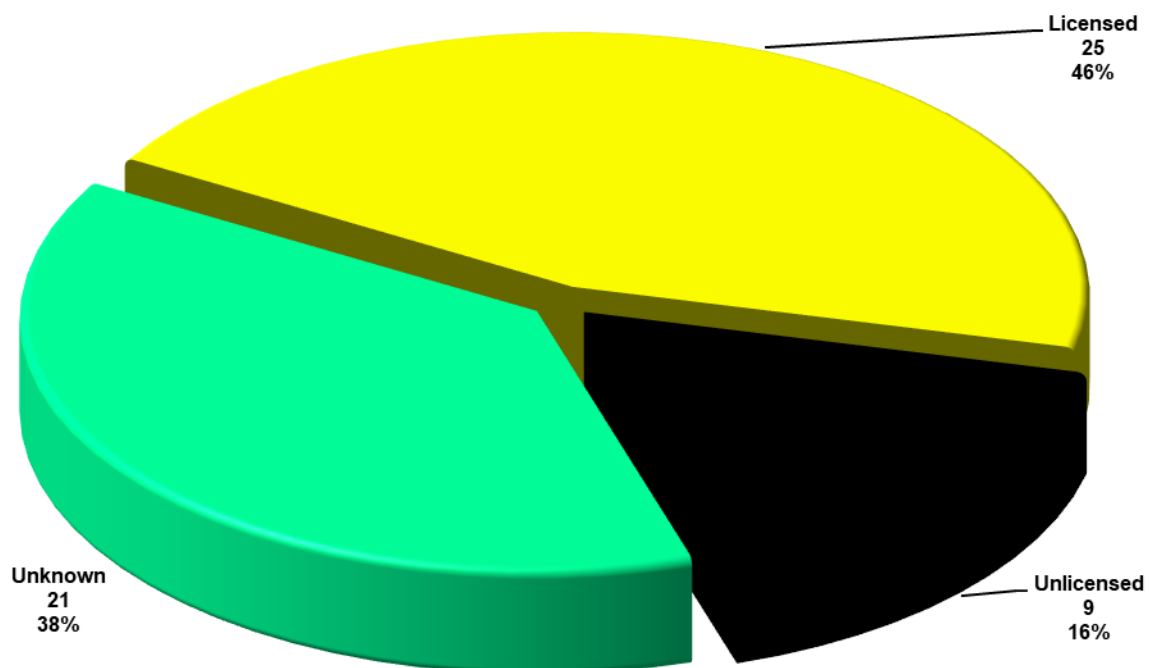
GRAPH 1.15 Victims' occupation from 2010-11



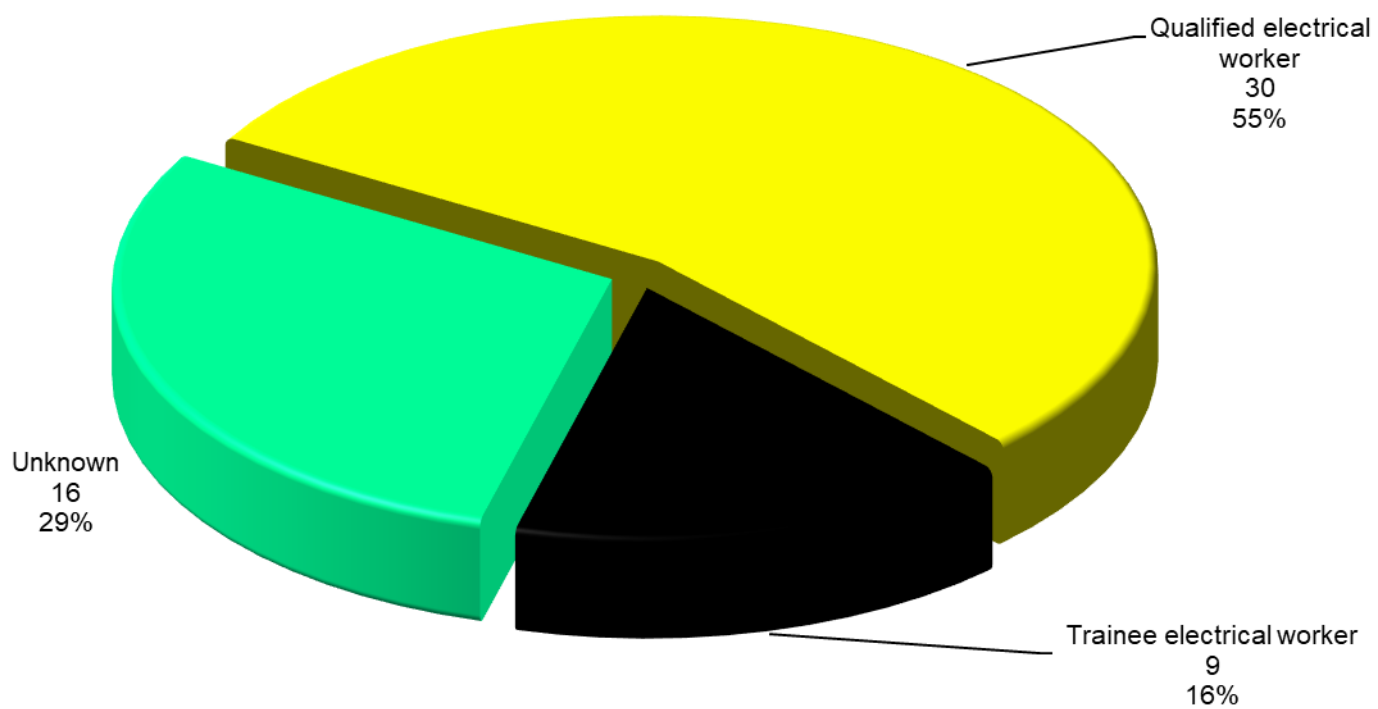
GRAPH 1.16 Electrical practitioners' category from 2010-11



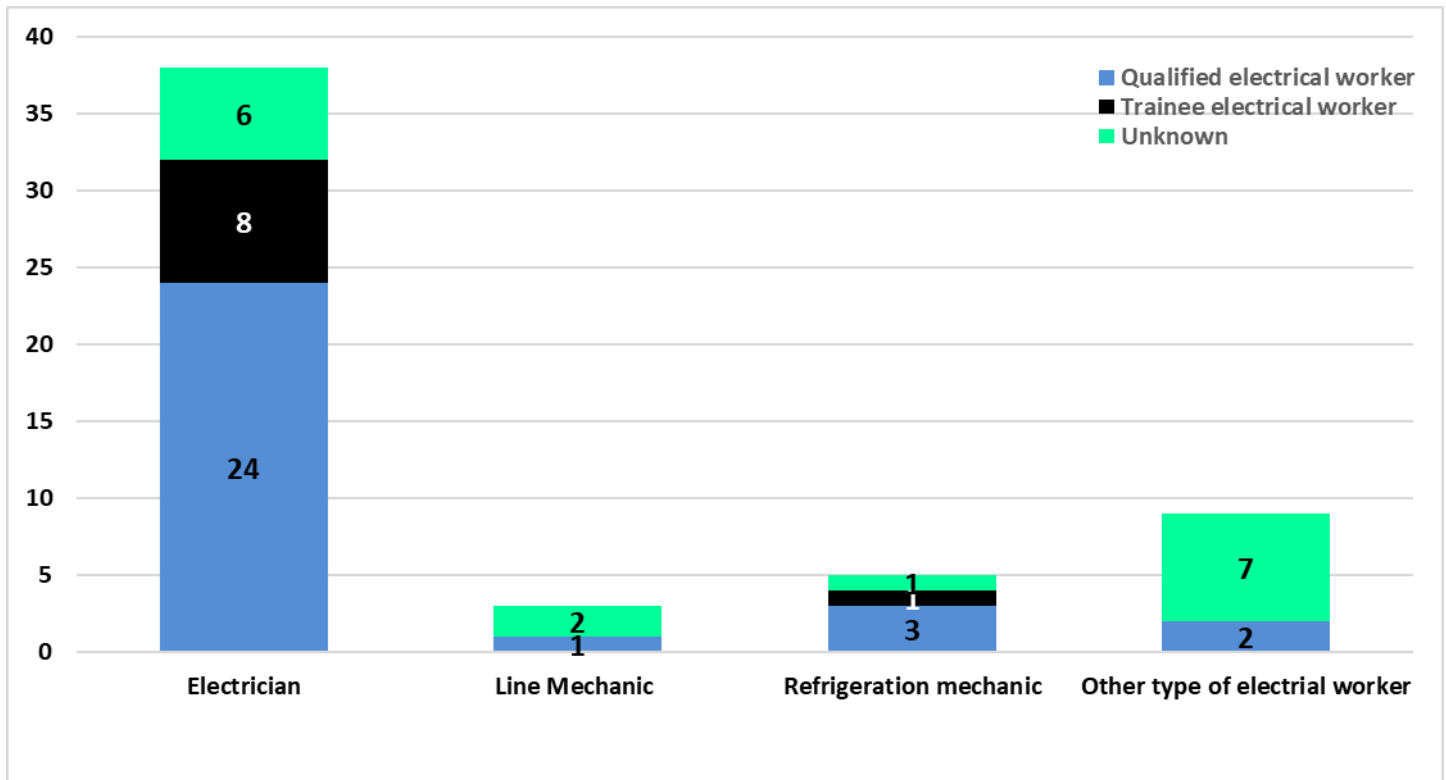
GRAPH 1.17 Electrical practitioners' practicing license stats from 2010-11



GRAPH 1.18 Electrical practitioners' qualification stats from 2010-11

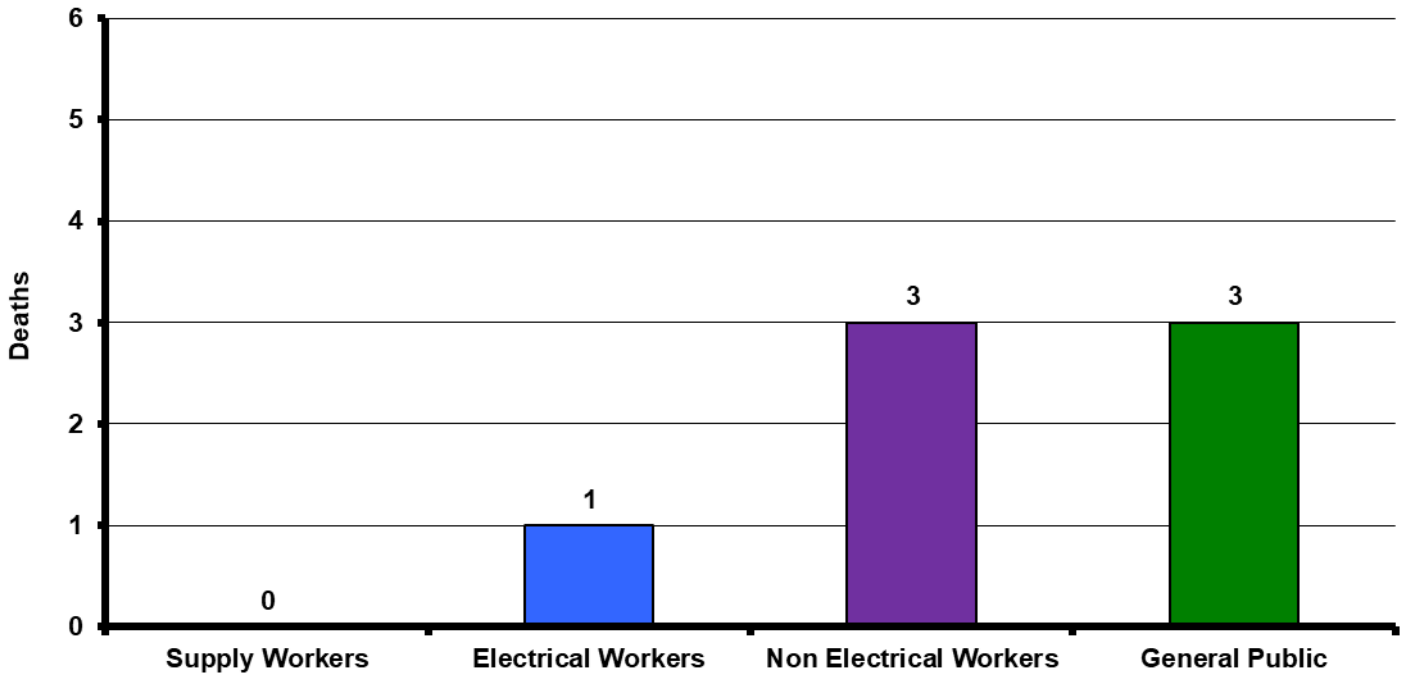


GRAPH 1.19 Practicing category & qualification stats from 2010-11

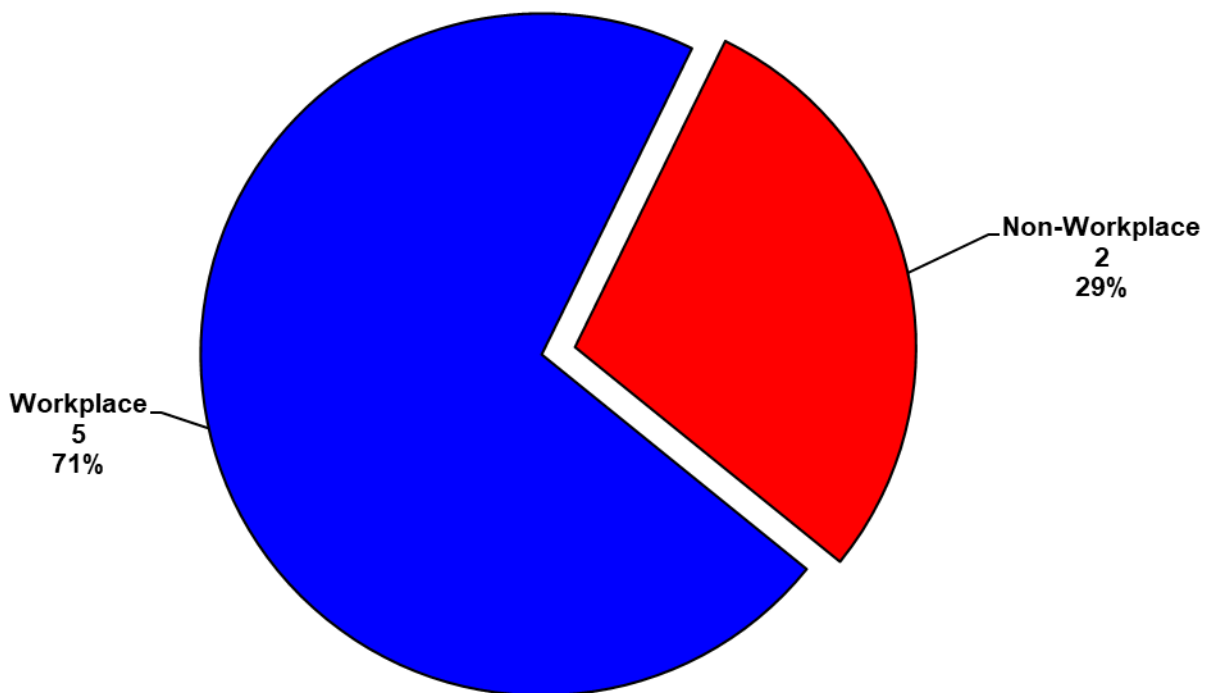


2. Fatalities involving network assets

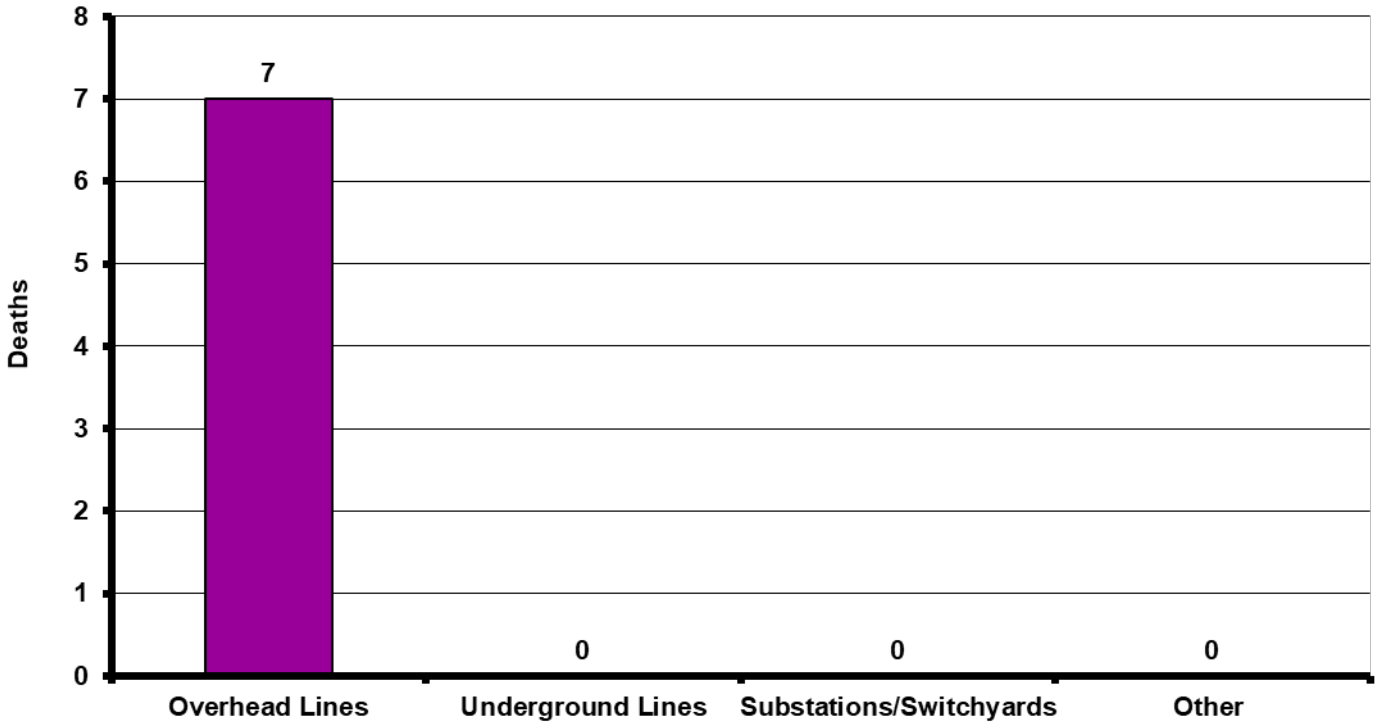
GRAPH 2.1 Deaths Involving electricity supply assets sorted by victim categories – 2023-24



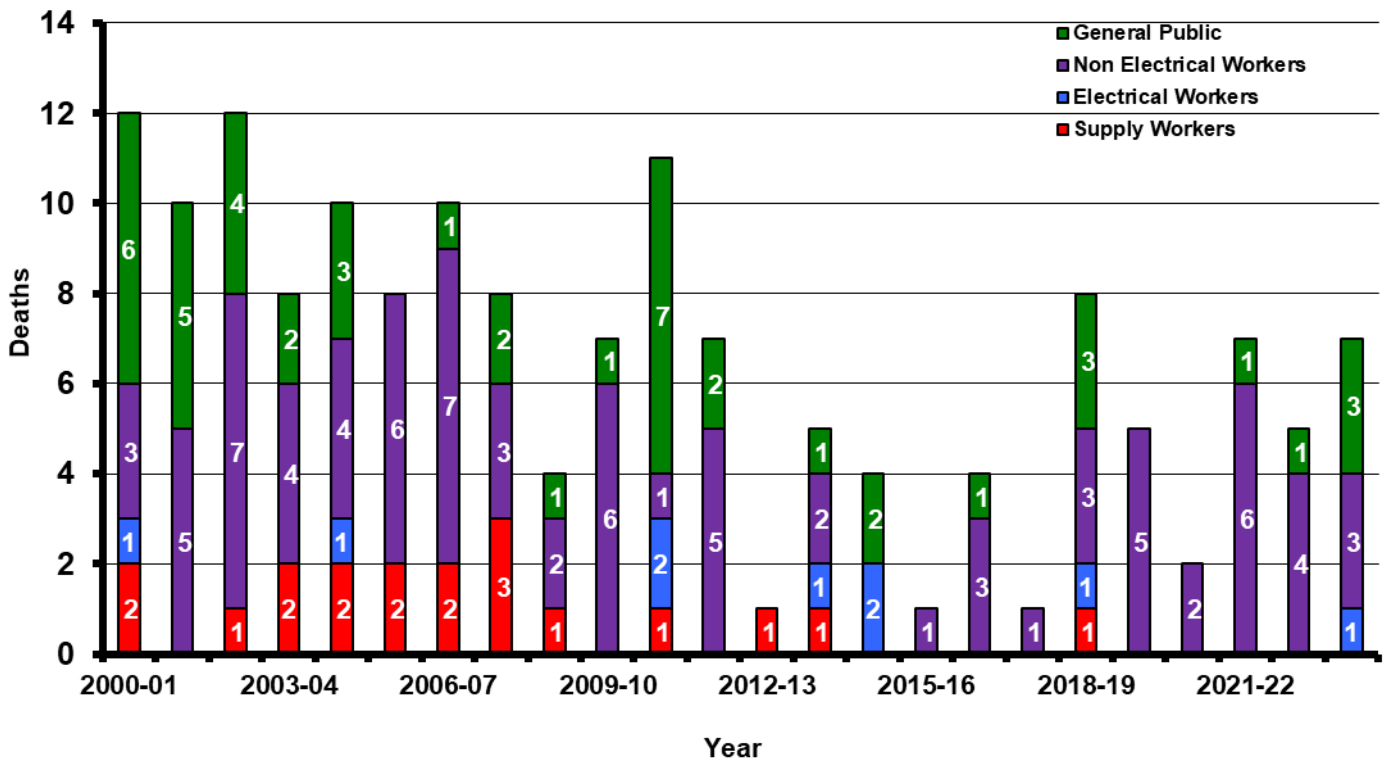
GRAPH 2.2 Deaths involving electricity supply assets: workplace versus non-workplace



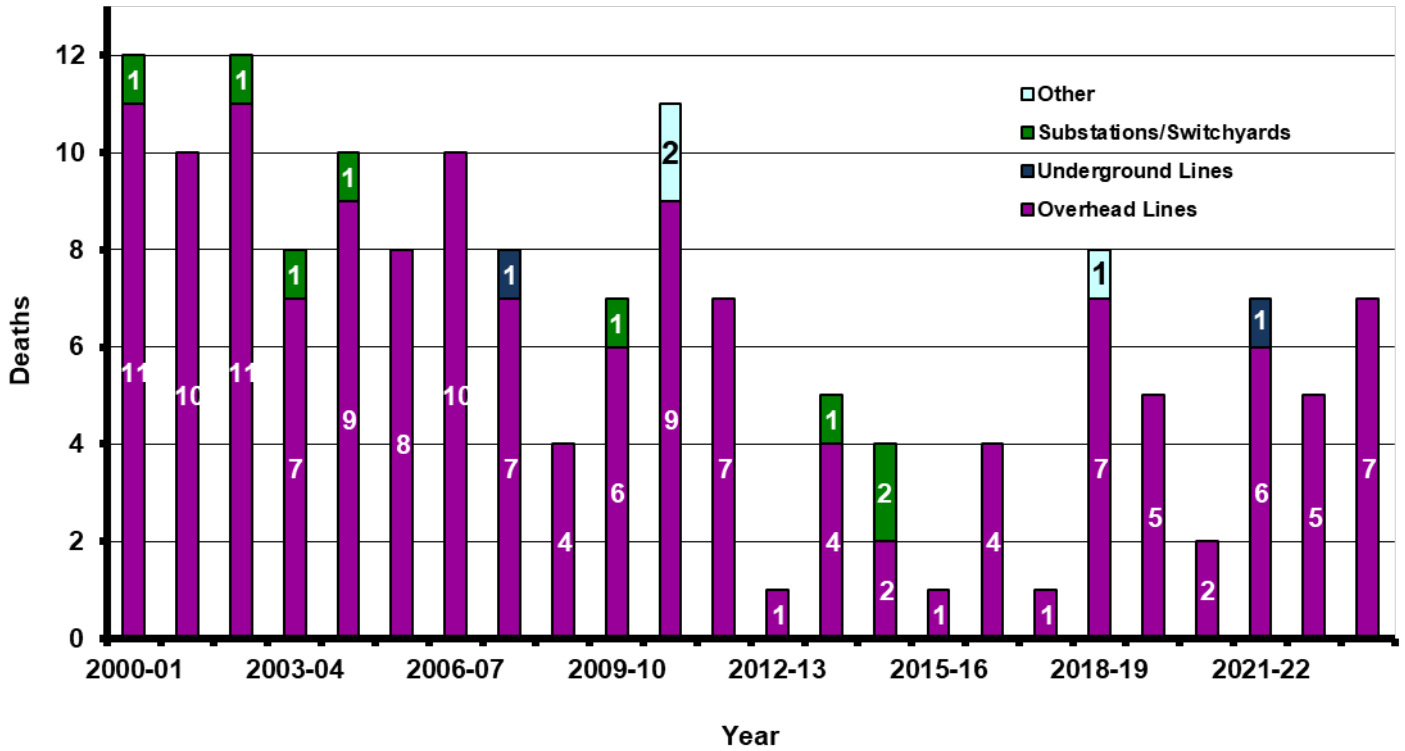
GRAPH 2.3 Deaths involving electricity supply assets sorted by asset types



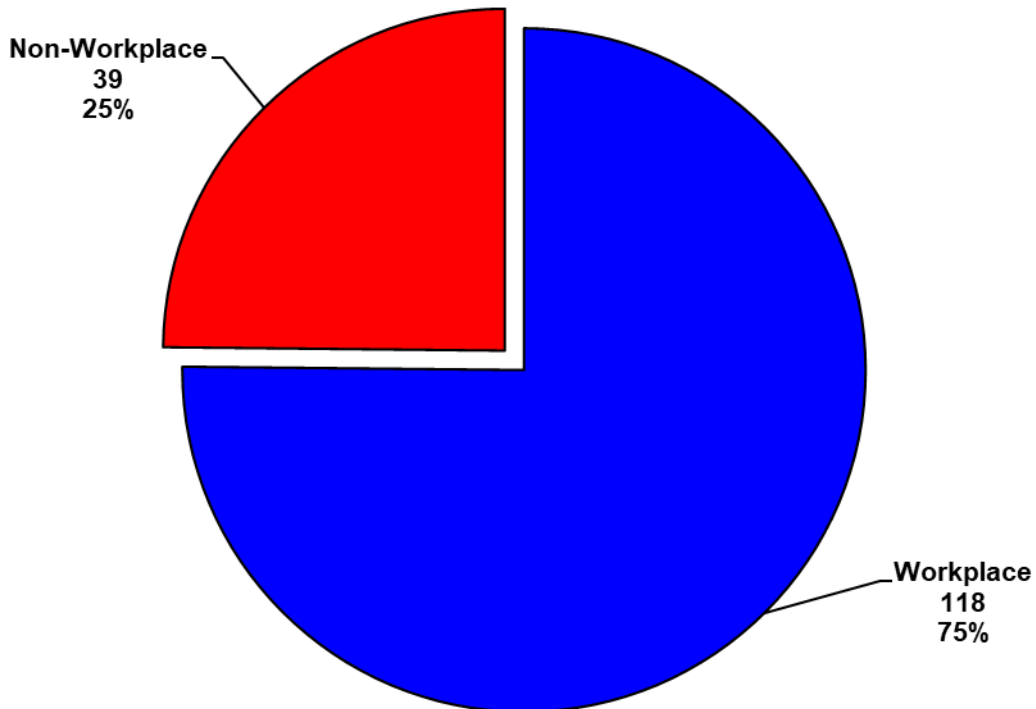
GRAPH 2.4 Deaths involving electricity supply assets by victim categories



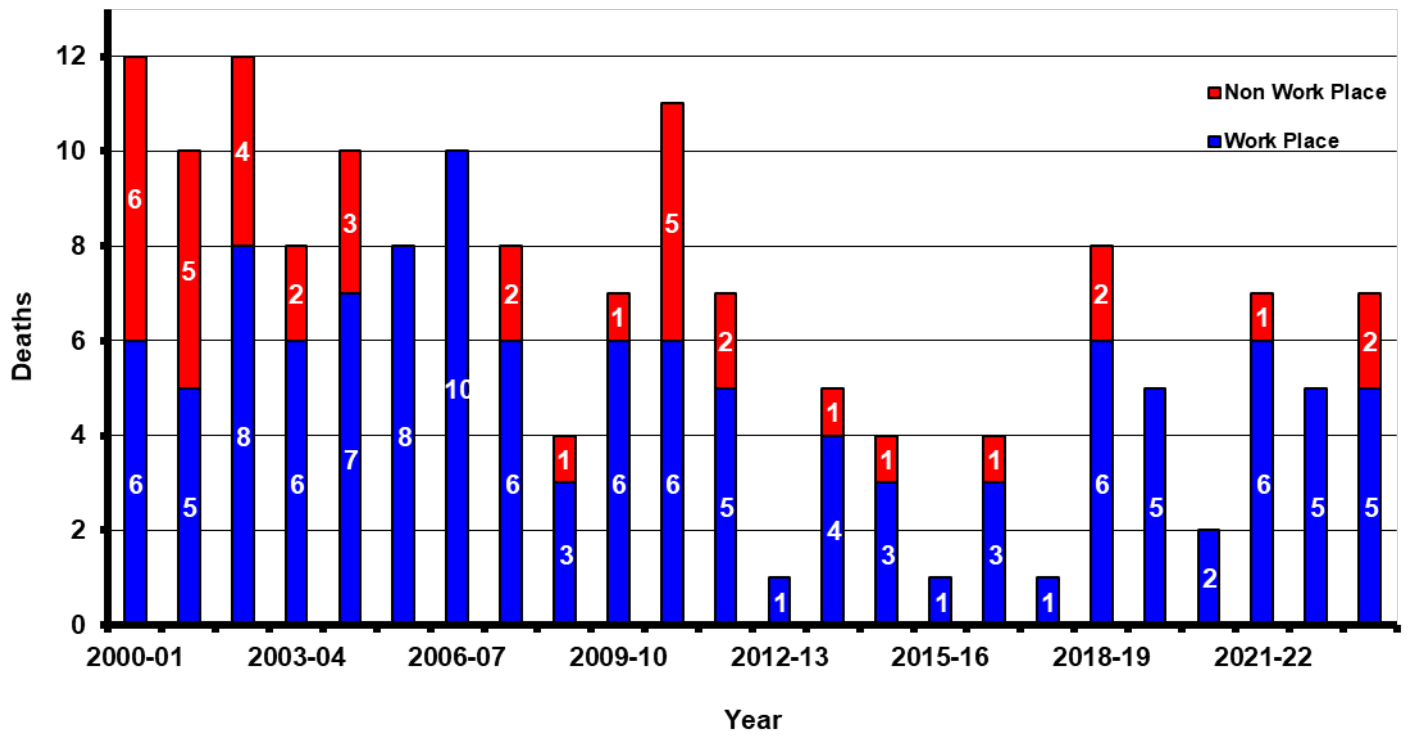
GRAPH 2.5 Deaths involving electricity supply assets sorted by asset types



GRAPH 2.6 Deaths involving electricity supply assets: workplace versus non-workplace

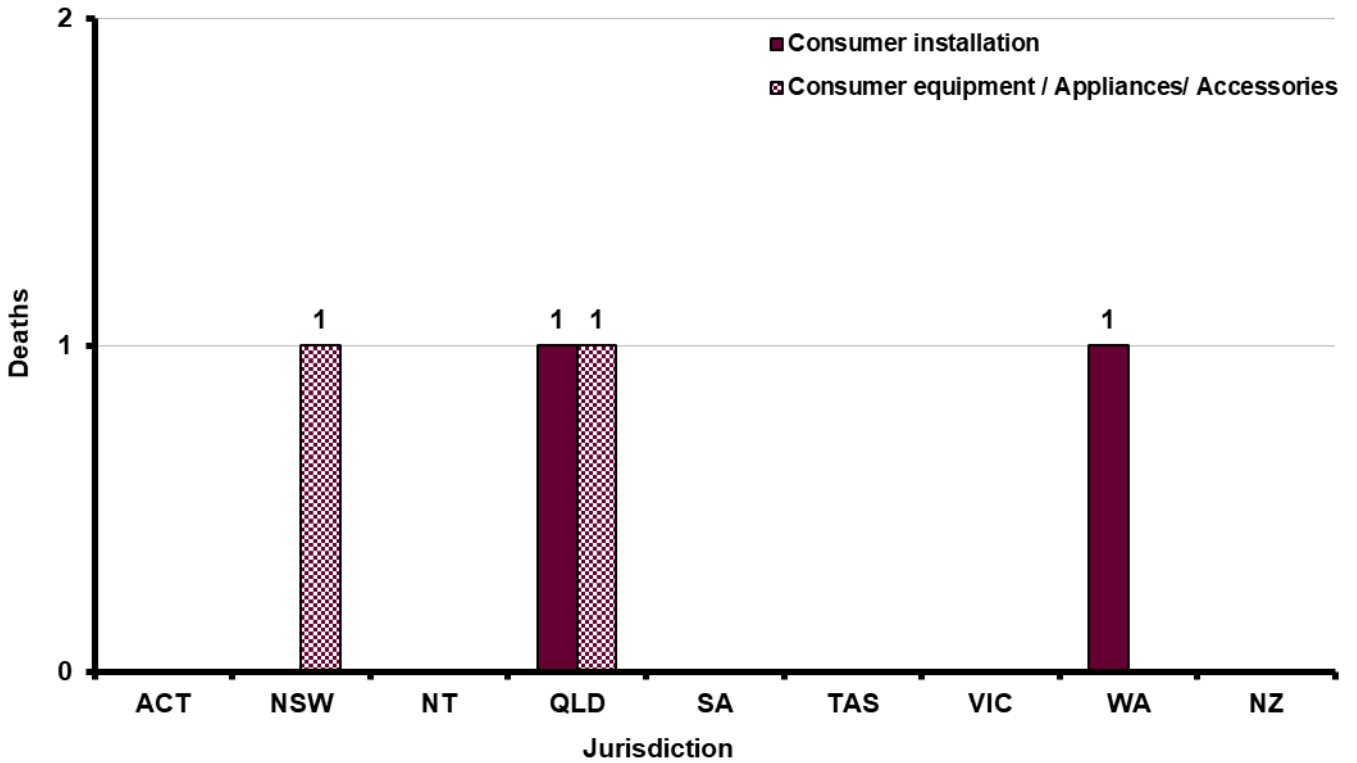


GRAPH 2.7 Deaths involving electricity supply assets: workplace versus non-workplace

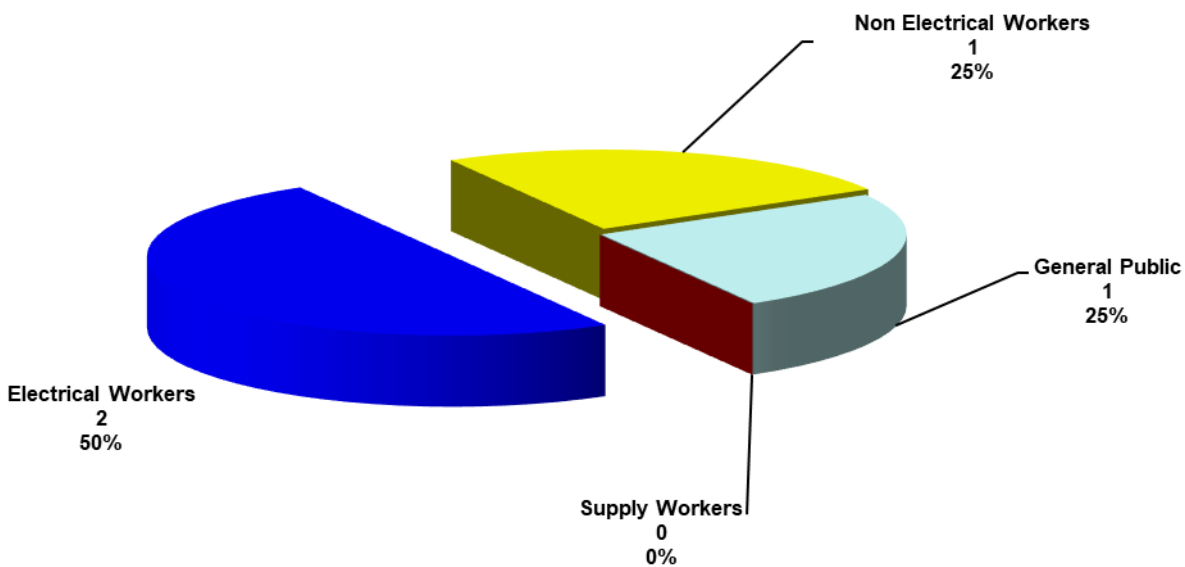


3. Fatalities involving consumer installations and equipment

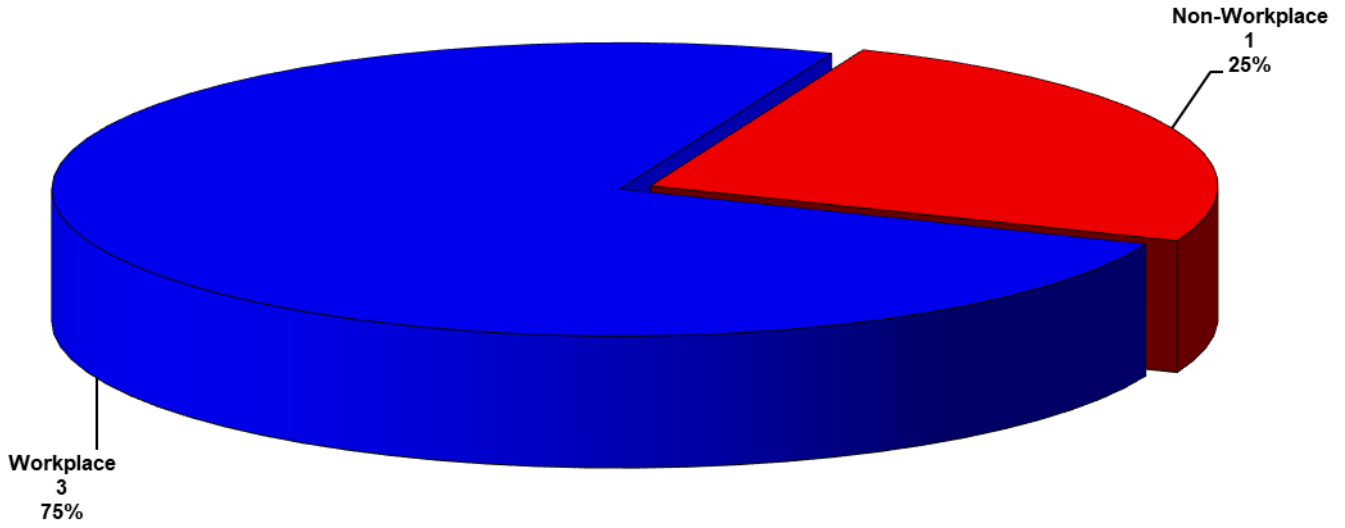
GRAPH 3.1 Electrical deaths in Australia and New Zealand involving consumer assets – 2023-24



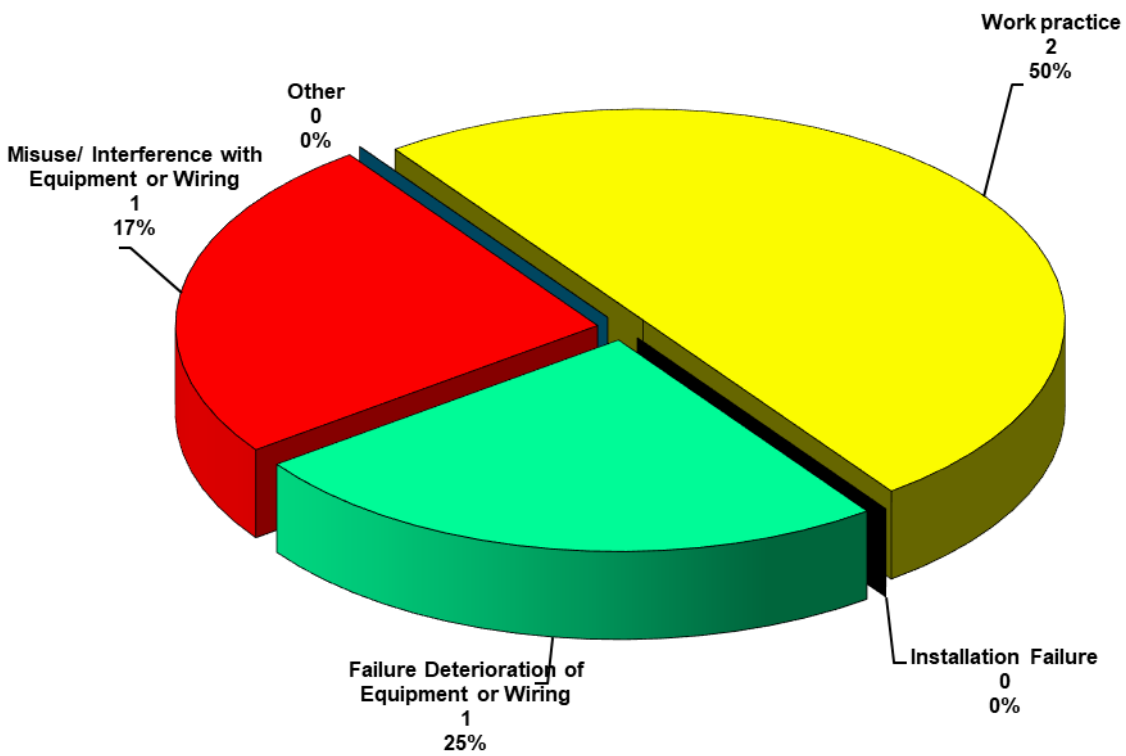
GRAPH 3.2 Deaths involving consumer assets by victim categories



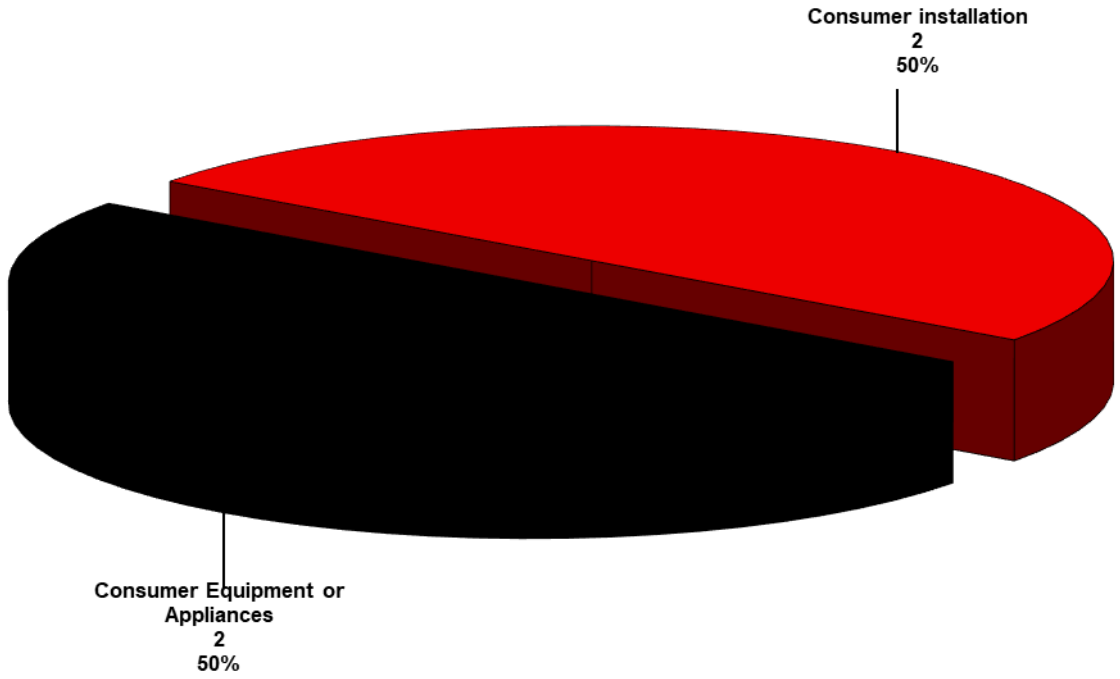
GRAPH 3.3 Deaths involving consumer installations or equipment at the workplace sorted by location



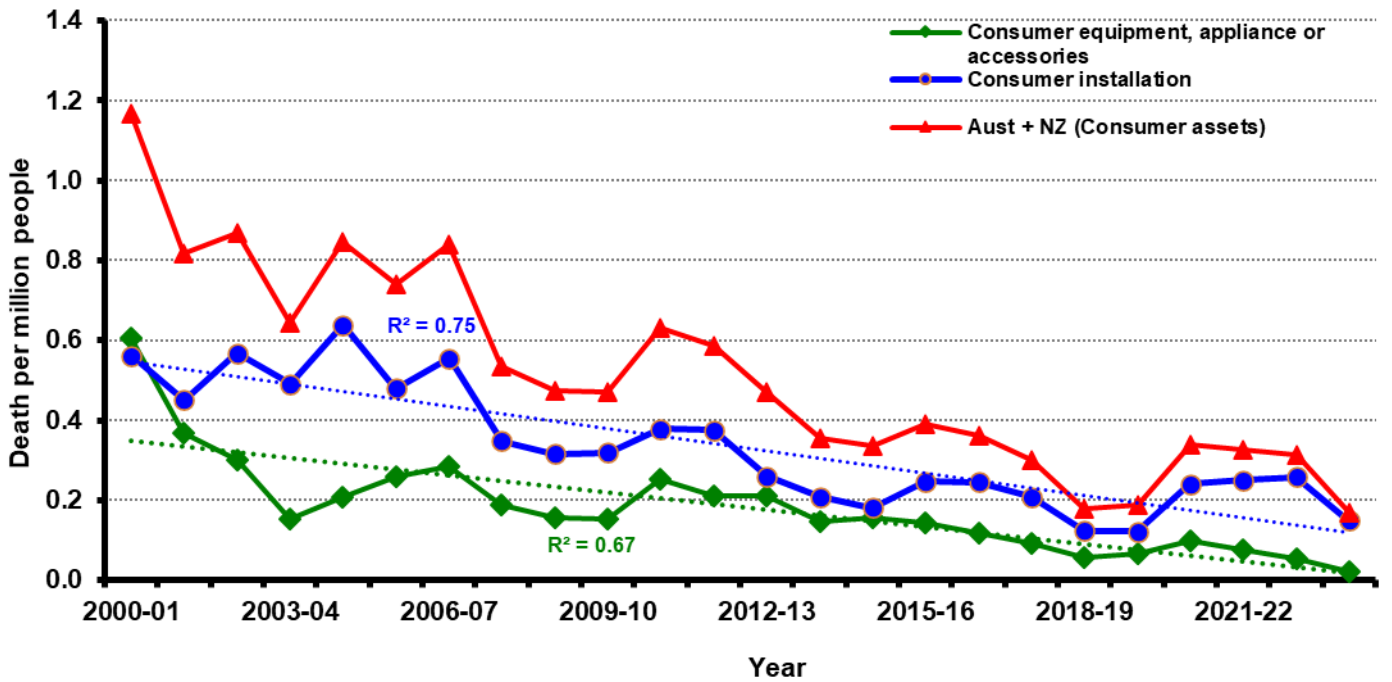
GRAPH 3.4 Contributing factors for electrical deaths involving consumer installations or equipment



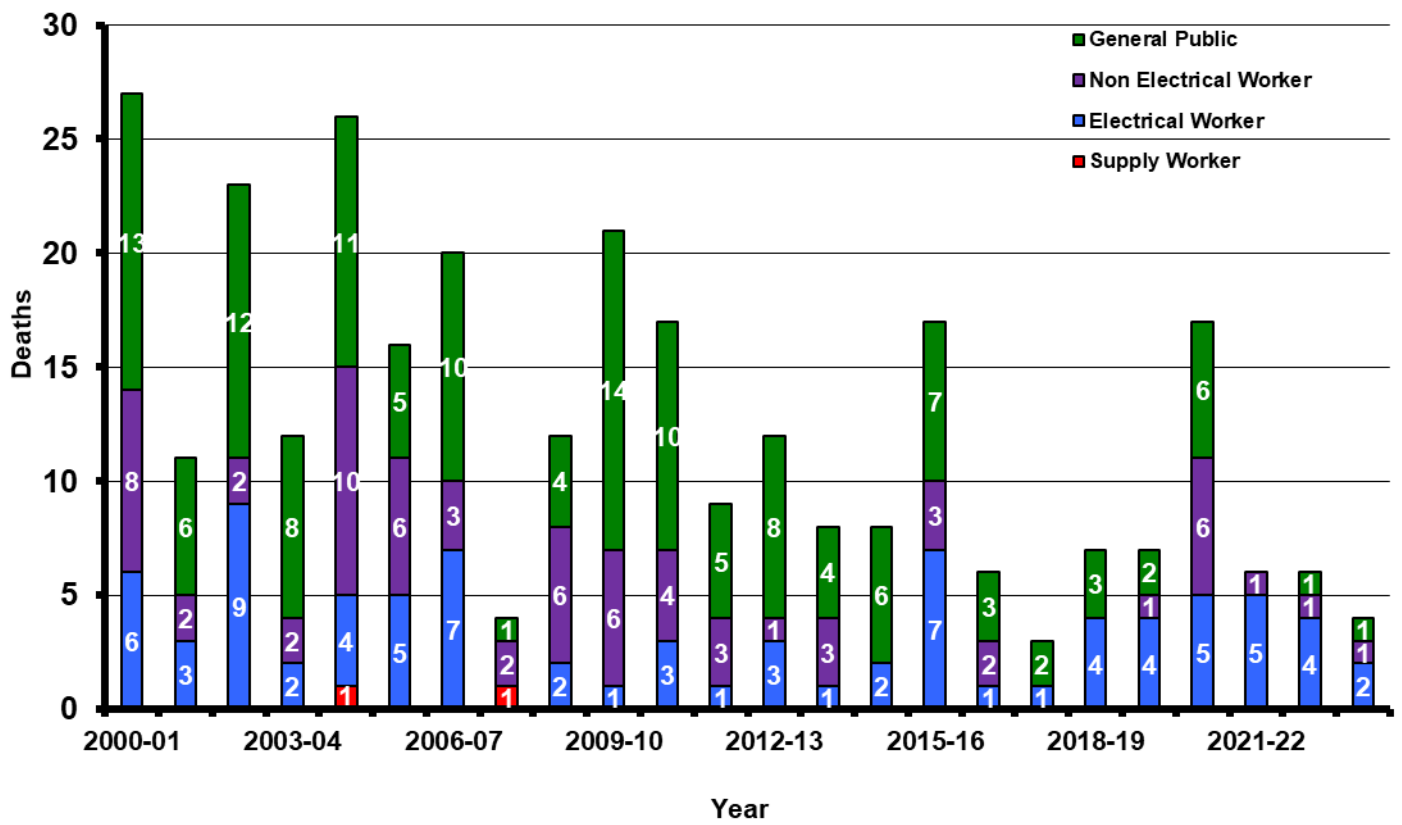
GRAPH 3.5 Deaths involving consumer installations (fixed wiring) or equipment



GRAPH 3.6 Trends by asset type with three year moving average



GRAPH 3.7 Deaths involving consumer assets by victim categories



4. Fatal electrical accidents since July 2000

YEAR	ACT	NSW	NT	QLD	SA	TAS	VIC	WA	AUST	NZ	TOTAL
2000-01	0	9	2	10	7	0	5	4	37	2	39
2001-02	1	3	1	3	2	3	1	2	16	5	21
2002-03	1	13	0	1	1	4	0	7	27	8	35
2003-04	0	10	1	2	1	0	1	3	18	2	20
2004-05	0	11	2	8	2	1	1	4	29	7	36
2005-06	0	6	3	3	0	0	6	3	21	3	24
2006-07	0	3	1	6	1	2	2	5	20	10	30
2007-08	0	0	0	5	0	0	1	1	7	5	12
2008-09	0	4	0	3	1	0	1	4	13	3	16
2009-10	0	5	2	5	2	0	9	2	25	3	28
2010-11	0	7	1	6	1	1	4	4	24	4	28
2011-12	1	6	0	4	1	0	1	0	13	3	16
2012-13	0	3	0	3	2	0	1	2	11	2	13
2013-14	0	5	1	1	1	0	2	1	11	2	13
2014-15	0	2	1	3	2	0	1	2	11	1	12
2015-16	0	7	0	2	0	1	5	1	16	2	18
2016-17	0	3	0	5	0	0	2	0	10	0	10
2017-18	0	0	0	0	1	0	2	1	4	0	4
2018-19	0	4	1	4	0	0	4	0	13	2	15
2019-20	0	1	1	1	0	0	2	3	8	4	12
2020-21	0	1	1	3	3	0	5	2	15	4	19
2021-22	0	7	0	4	0	0	2	0	13	0	13
2022-23	0	3	0	6	0	0	0	1	10	1	11
2023-24	0	4	0	4	0	0	1	1	10	1	11
Total	3	117	18	92	28	12	59	53	382	74	456

5. Summary of electrical fatality reports 2023-24

ELECTRICITY DISTRIBUTOR/SUPPLY AUTHORITY EQUIPMENT

Legend:

- A Supply worker
- B Electrical worker
- C Non-electrical worker
- D General public

	ACT				NSW				NT				QLD				SA			
	A	B	C	D	A	B	C	D	A	B	C	D	A	B	C	D	A	B	C	D
Overhead Line	0	0	0	0	0	1	1	1	0	0	0	0	0	0	1	1	0	0	0	0
Underground Line	0	0	0	0	0	0	0	0	0	0	0	0	0	0	0	0	0	0	0	0
Substation/Switchyard	0	0	0	0	0	0	0	0	0	0	0	0	0	0	0	0	0	0	0	0
Other	0	0	0	0	0	0	0	0	0	0	0	0	0	0	0	0	0	0	0	0
TOTAL	0	0	0	0	0	1	1	1	0	0	0	0	0	0	1	1	0	0	0	0
TOTAL	0				3				0				2				0			

	TAS				VIC				WA				NZ				TOTAL				Total
	A	B	C	D	A	B	C	D	A	B	C	D	A	B	C	D	A	B	C	D	
Overhead Line	0	0	0	0	0	0	0	1	0	0	0	0	0	0	1	0	0	1	3	3	7
Underground Line	0	0	0	0	0	0	0	0	0	0	0	0	0	0	0	0	0	0	0	0	0
Substation/Switchyard	0	0	0	0	0	0	0	0	0	0	0	0	0	0	0	0	0	0	0	0	0
Other	0	0	0	0	0	0	0	0	0	0	0	0	0	0	0	0	0	0	0	0	0
TOTAL	0	0	0	0	0	0	0	1	0	0	0	0	0	0	1	0	0	1	3	3	7
TOTAL	0				1				0				1				7				

CONSUMER INSTALLATIONS (installation of fixed equipment)

Legend:

- A Supply worker
- B Electrical worker
- C Non-electrical worker
- D General public

	ACT				NSW				NT				QLD				SA			
	A	B	C	D	A	B	C	D	A	B	C	D	A	B	C	D	A	B	C	D
Work practice	0	0	0	0	0	0	0	0	0	0	0	0	0	0	0	0	0	0	0	0
Installation Failure	0	0	0	0	0	0	0	0	0	0	0	0	0	0	0	0	0	0	0	0
Failure Deterioration of Equipment or Wiring	0	0	0	0	0	0	0	0	0	0	0	0	0	0	0	0	0	0	0	0
Misuse/Interference with Equipment or Wiring	0	0	0	0	0	0	0	0	0	0	0	0	0	0	0	1	0	0	0	0
Other	0	0	0	0	0	0	0	0	0	0	0	0	0	0	0	0	0	0	0	0
TOTAL	0	0	0	0	0	0	0	0	0	0	0	0	0	0	0	1	0	0	0	0
TOTAL	0				0				0				1				0			

	TAS				VIC				WA				NZ				TOTAL				Total
	A	B	C	D	A	B	C	D	A	B	C	D	A	B	C	D	A	B	C	D	
Work practice	0	0	0	0	0	0	0	0	0	1	0	0	0	0	0	0	0	1	0	0	1
Installation Failure	0	0	0	0	0	0	0	0	0	0	0	0	0	0	0	0	0	0	0	0	0
Failure Deterioration of Equipment or Wiring	0	0	0	0	0	0	0	0	0	0	0	0	0	0	0	0	0	0	0	0	0
Misuse/Interference with Equipment or Wiring	0	0	0	0	0	0	0	0	0	0	0	0	0	0	0	0	0	0	0	1	1
Other	0	0	0	0	0	0	0	0	0	0	0	0	0	0	0	0	0	0	0	0	0
TOTAL	0	0	0	0	0	0	0	0	0	1	0	0	0	0	0	0	0	1	0	1	2
TOTAL	0				0				1				0				2				

CONSUMER EQUIPMENT (Appliance or Accessories)

Legend:

- A Supply worker
- B Electrical worker
- C Non-electrical worker
- D General public

	ACT				NSW				NT				QLD				SA			
	A	B	C	D	A	B	C	D	A	B	C	D	A	B	C	D	A	B	C	D
Work practice	0	0	0	0	0	0	0	0	0	0	0	0	0	1	0	0	0	0	0	0
Installation Failure	0	0	0	0	0	0	0	0	0	0	0	0	0	0	0	0	0	0	0	0
Failure Deterioration of Equipment or Wiring	0	0	0	0	0	0	1	0	0	0	0	0	0	0	0	0	0	0	0	0
Misuse/Interference with Equipment or Wiring	0	0	0	0	0	0	0	0	0	0	0	0	0	0	0	0	0	0	0	0
Other	0	0	0	0	0	0	0	0	0	0	0	0	0	0	0	0	0	0	0	0
TOTAL	0	0	0	0	0	0	1	0	0	0	0	0	0	1	0	0	0	0	0	0
TOTAL	0				1				0				1				0			

	TAS				VIC				WA				NZ				TOTAL				Total
	A	B	C	D	A	B	C	D	A	B	C	D	A	B	C	D	A	B	C	D	
Work practice	0	0	0	0	0	0	0	0	0	0	0	0	0	0	0	0	0	1	0	0	1
Installation Failure	0	0	0	0	0	0	0	0	0	0	0	0	0	0	0	0	0	0	0	0	0
Failure Deterioration of Equipment or Wiring	0	0	0	0	0	0	0	0	0	0	0	0	0	0	0	0	0	0	1	0	1
Misuse/Interference with Equipment or Wiring	0	0	0	0	0	0	0	0	0	0	0	0	0	0	0	0	0	0	0	0	0
Other	0	0	0	0	0	0	0	0	0	0	0	0	0	0	0	0	0	0	0	0	0
TOTAL	0	0	0	0	0	0	0	0	0	0	0	0	0	0	0	0	0	1	1	0	2
TOTAL	0				0				0				0				2				