
Electrical
Regulatory
Authorities
Council

Electrical Fatal Incident Data

Australia & New Zealand 2022 - 2023

This Report covers:

- Definitions
- Summary of 2022-2023 year
- Trend Analysis
- Series of graphs & tables for data supplied covering the period 1 July 2000 to 30 June 2023
 1. Regional fatalities & victims' demographics
 2. Fatalities involving network assets
 3. Fatalities involving consumer installations and equipment
 4. Tables - fatal electrical accidents since July 2000
 5. Tables - summary of electrical fatality reports 2022-23

Definitions

"Consumer installation"

All parts of an electrical installation past the point of supply on the consumer side.

"Distribution or supply equipment"

Equipment used in the generation, transmission, supply or distribution of electricity.

"Electrical fatal incident"

Any fatal event that results from an electrical shock, electrical burn or electrical arc burn except if linked to the initial event of a natural disaster, criminal activity or suicide.

"Electrical worker"

A person who carries out electrical work and is licensed or authorised to do so.

"General public"

A person who is not doing any work as part of his or her employment or under a contract of work, or training at the time the incident occurs

"Misuse/Interference"

To damage, mishandle or use equipment in a way that it is not intended, or for what it is designed.

"Non-electrical Worker"

A person who is in the process of carrying out their occupation and is not an electrical worker.

"Supply worker"

A person who is employed by a network operator.

"Work practice"

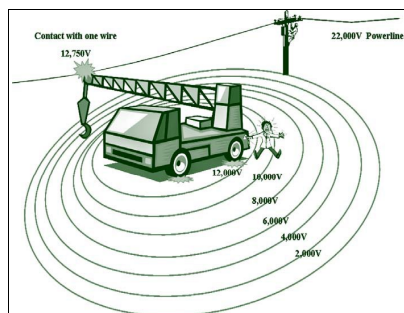
The process or method by which work is carried out.

Summary of 2022-2023 year

This report covers the 12-month period from 1 July 2022 to 30 June 2023. It is based on details of incidents reported to electrical safety regulators in Australia and New Zealand.

Eight electrical deaths from eight incidents were recorded in Australia and New Zealand in 2022-23. This is equivalent to 0.25 deaths per million people (dmp) which is 0.07 dmp lower than the last year. There were 10 deaths occurred during last year (2021-22).

Seven of eight deaths occurred in Australia.

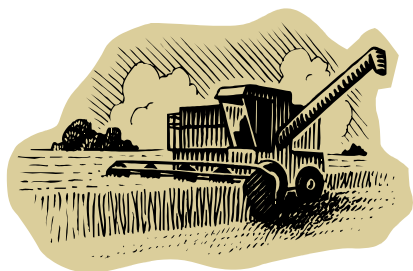


There were five distribution network related death caused by five electrical incidents.

All five deaths were associated with overhead conductor incidents.



Three deaths were caused by four incidents involving customers' installations or appliances or equipment.



Of the total eight people who were electrocuted, 12% (1 of 8) were electrical workers, 60% (5) non-electrical workers and 38% (3) were the general public.

Trend Analysis

Electrical fatality information from the past 23 years (2000-01 to 2022-23) has been analysed for trends and frequency.

The electrical deaths over 23 years continue to show a decrease from an average (three years) of 1.79 deaths per million people (dmp) in 2000-01 to 0.39 dmp in 2022-23. An average rate of reduction is 0.06 dmp per year.

In Australia, the reduction is from 1.87 to 0.40 (0.06 per year) dmp, while for New Zealand the reduction is from 1.39 to 0.33 (0.05 per year).

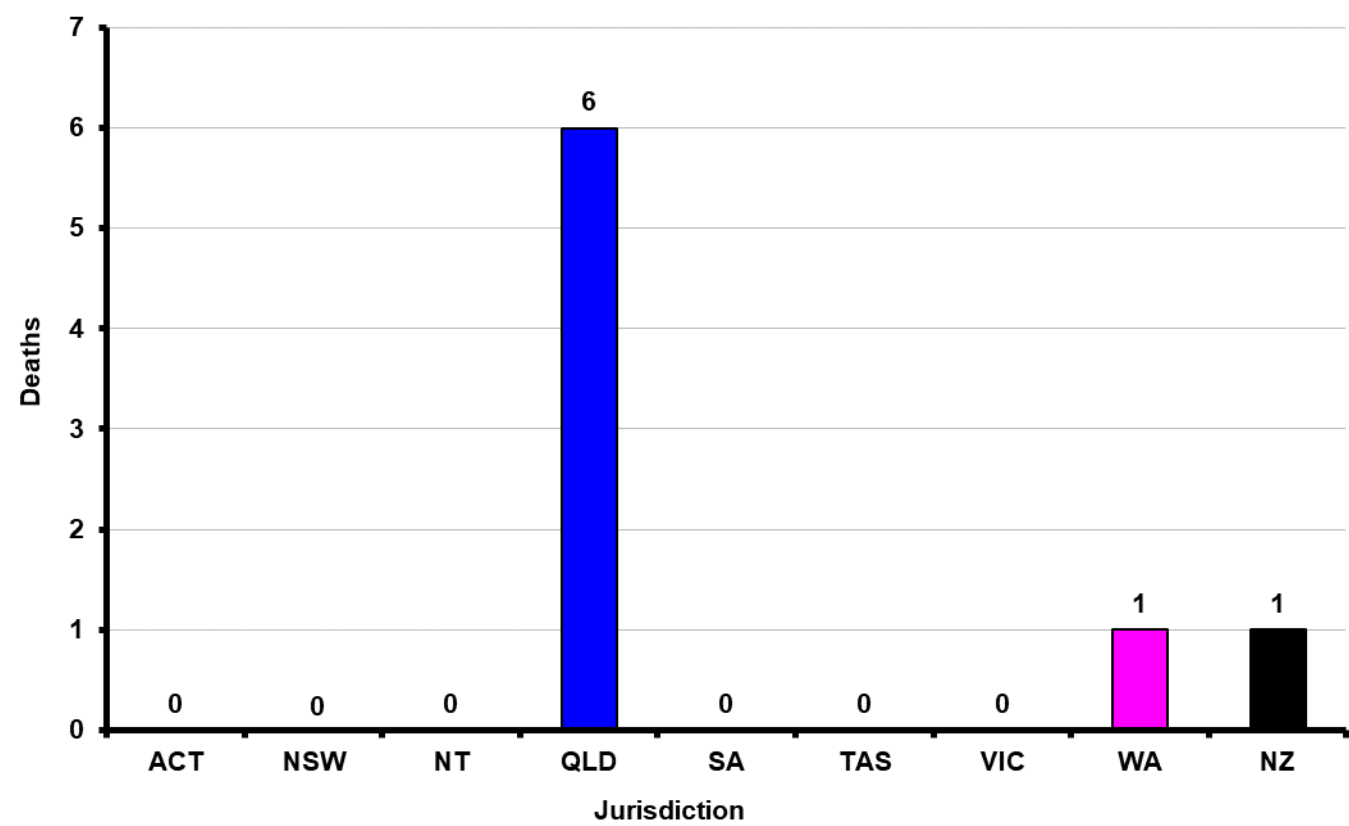
Most electrical deaths associated with electricity networks were as a result of working on or near energised overhead conductors. 90% (135 of 150) of electrical deaths associated with electricity supply networks involved overhead conductors.

Consumer appliances/equipment were involved in about twice (289) the number of deaths than the electricity supplier assets (150). Also, there was a large variation in the number of deaths involving consumer equipment from one year to the next than in deaths involving electrical supplier assets. The dmp continued to decline over the last 23 years for both consumer and supplier assets.

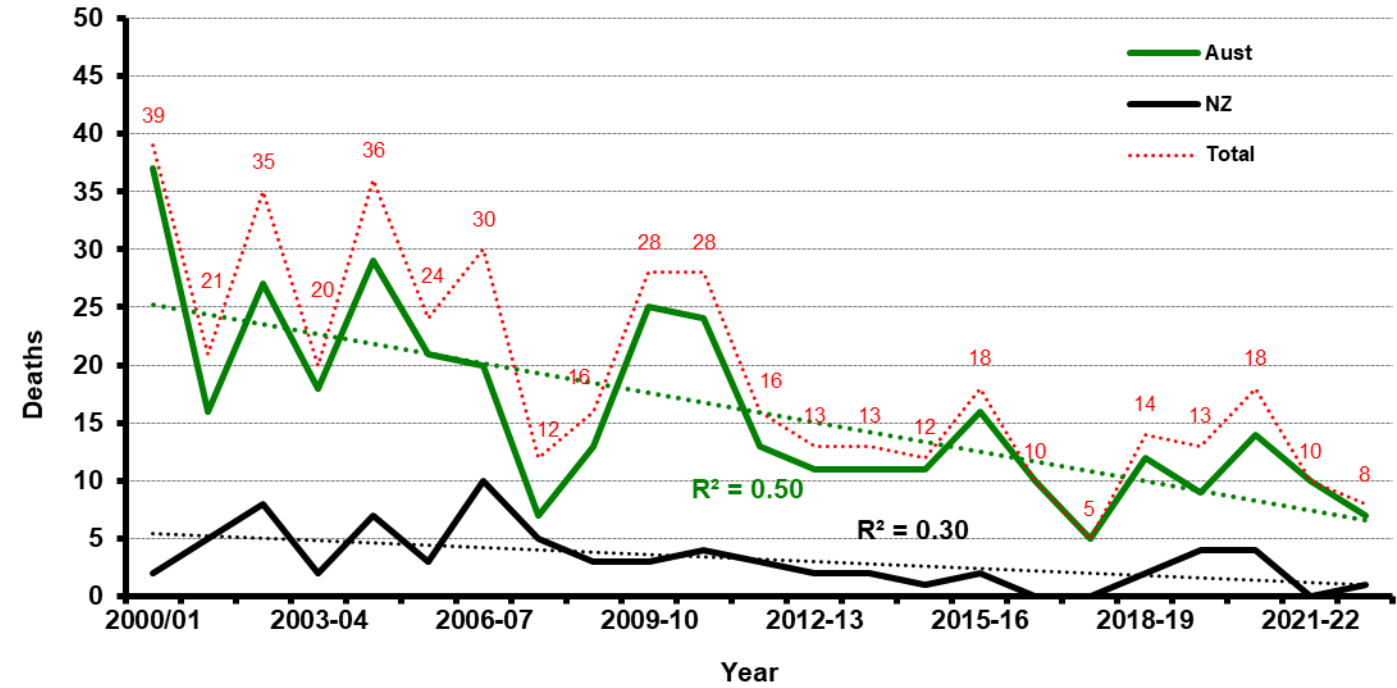
This report presents the information in a series of charts and tables.

1. Regional fatalities & victims’ demographics

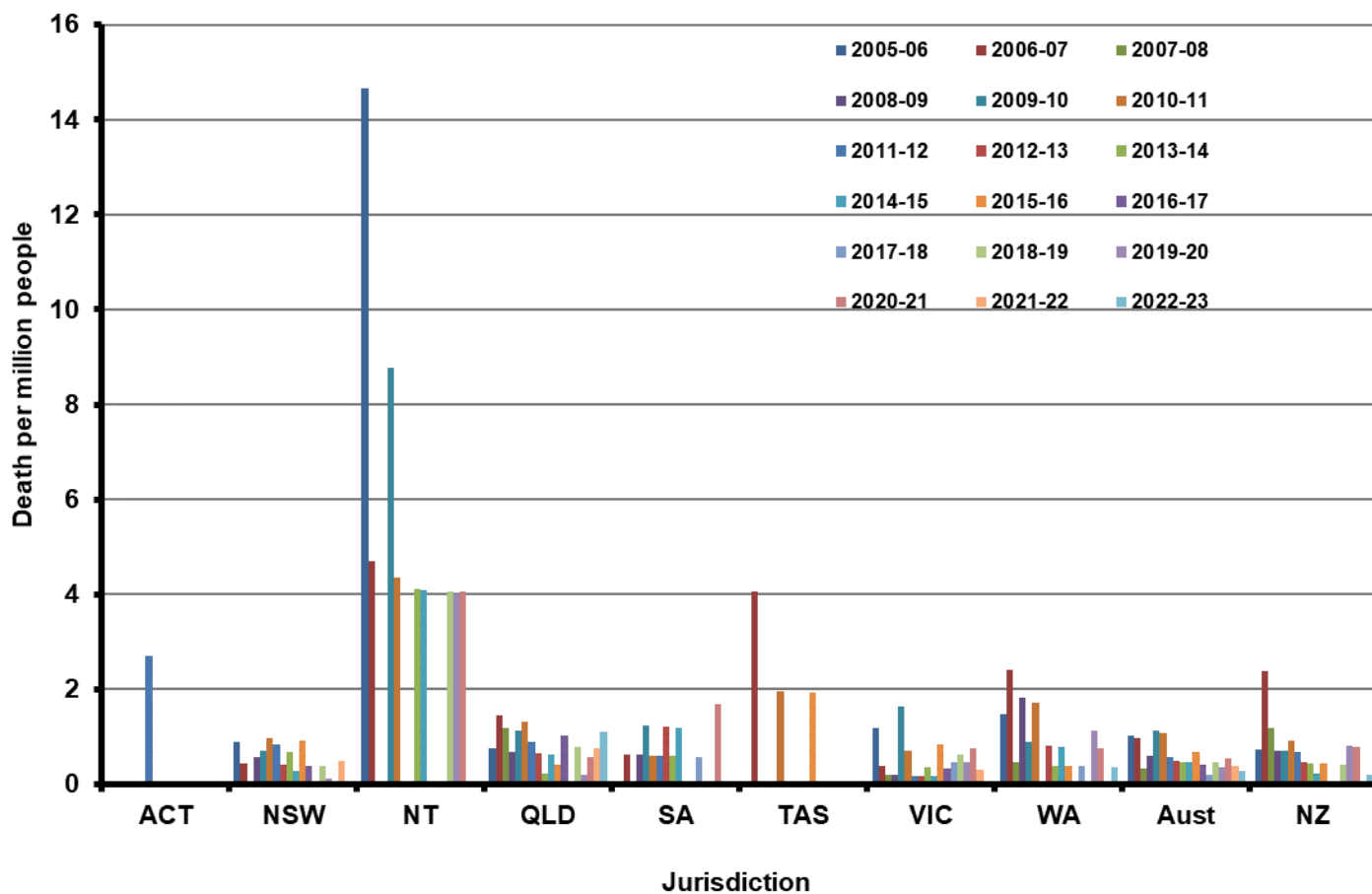
GRAPH 1.1 Electrical deaths in Australia and New Zealand – 2022-23



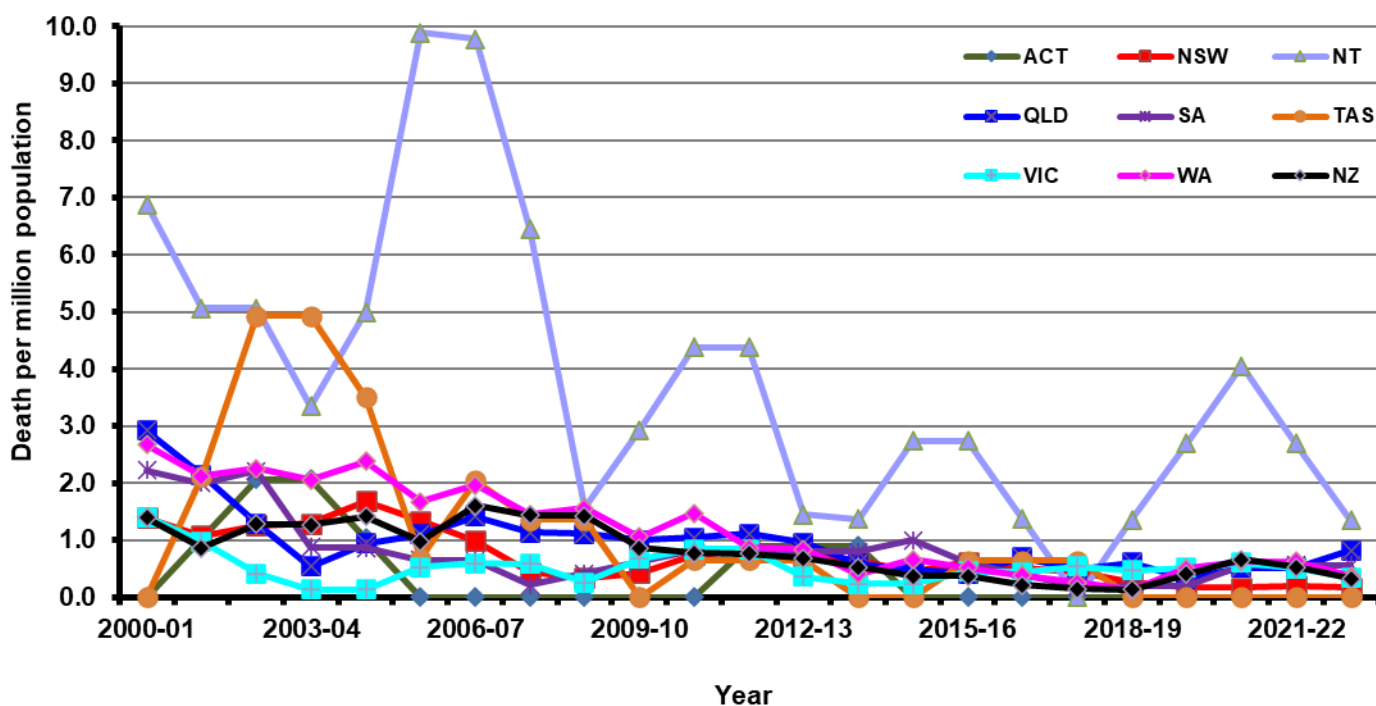
GRAPH 1.2 Number of electrical deaths in Australia and New Zealand



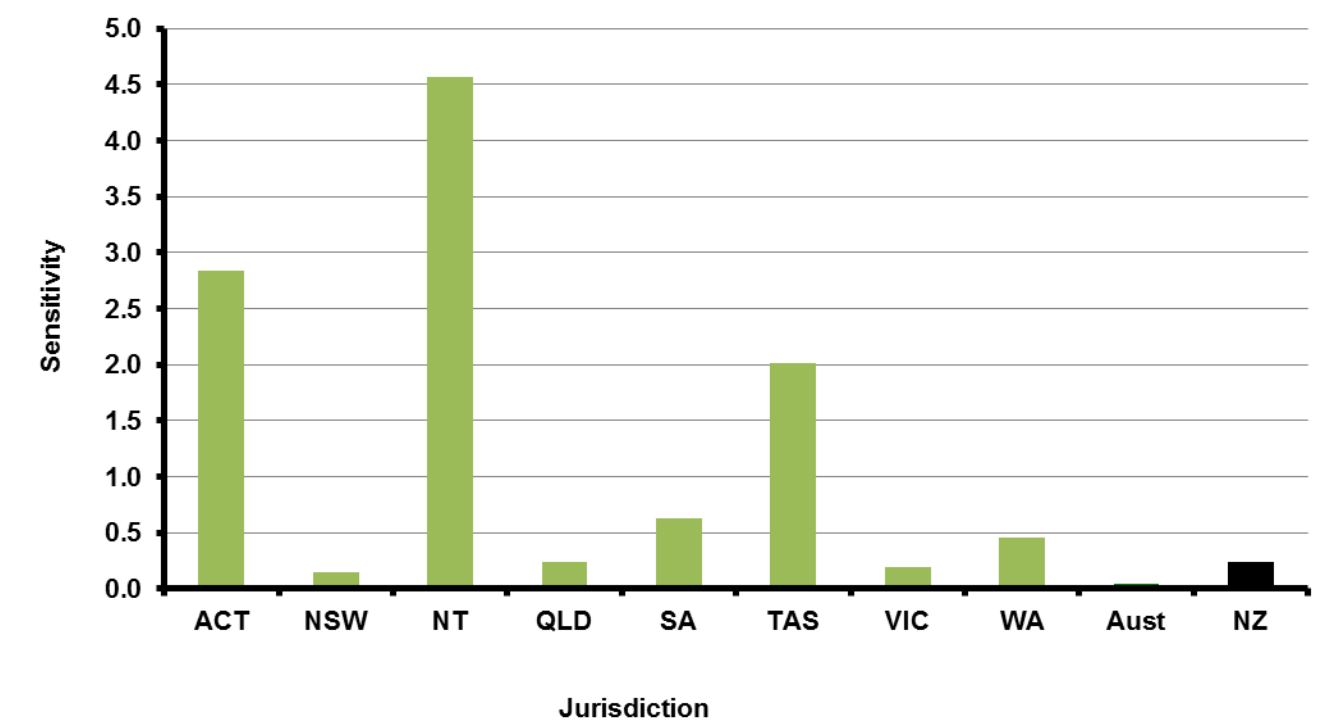
GRAPH 1.3 Electrical deaths per million people from 2005-06



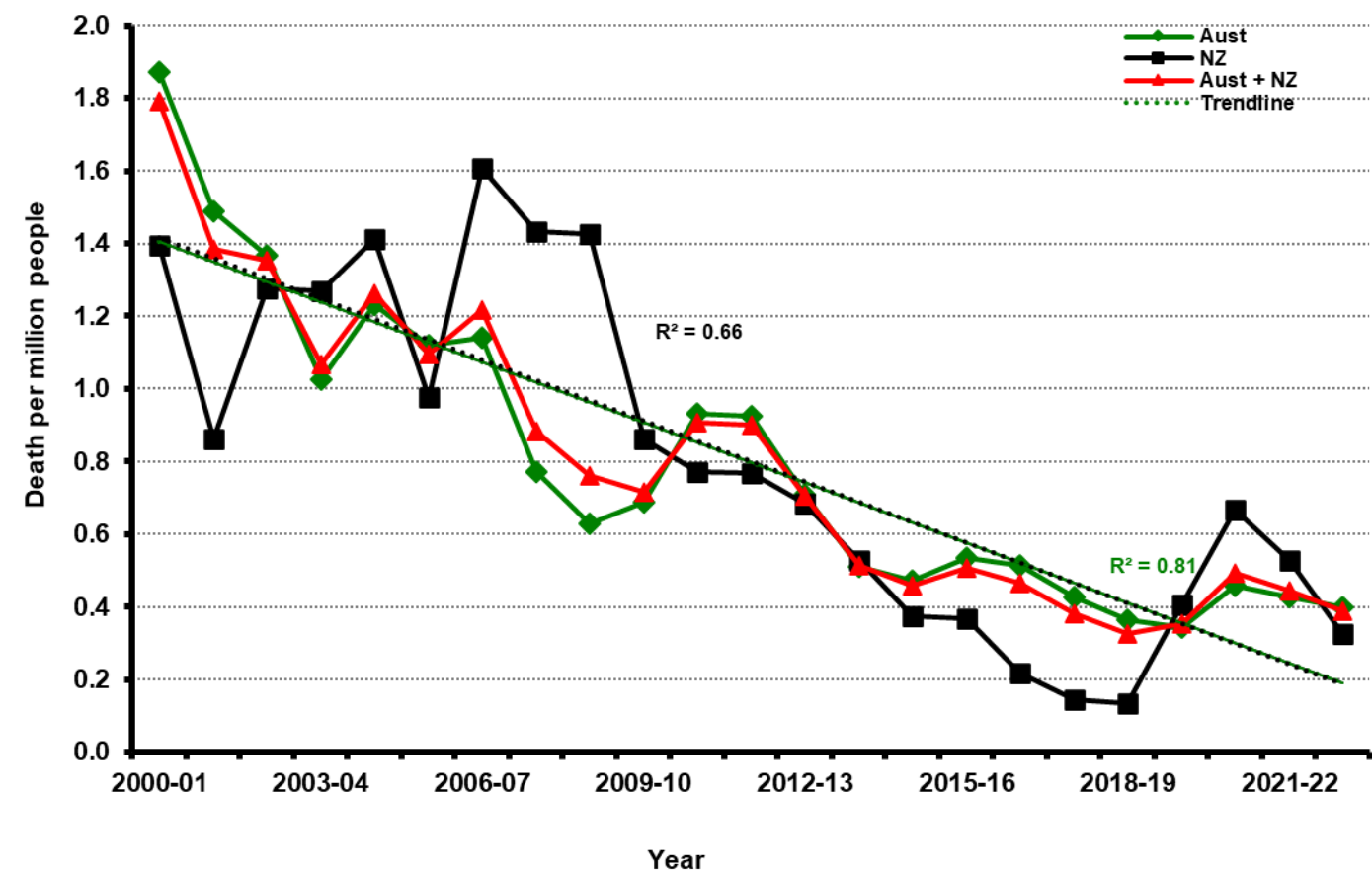
GRAPH 1.4 Trend in electrical deaths (three year moving average per million people)



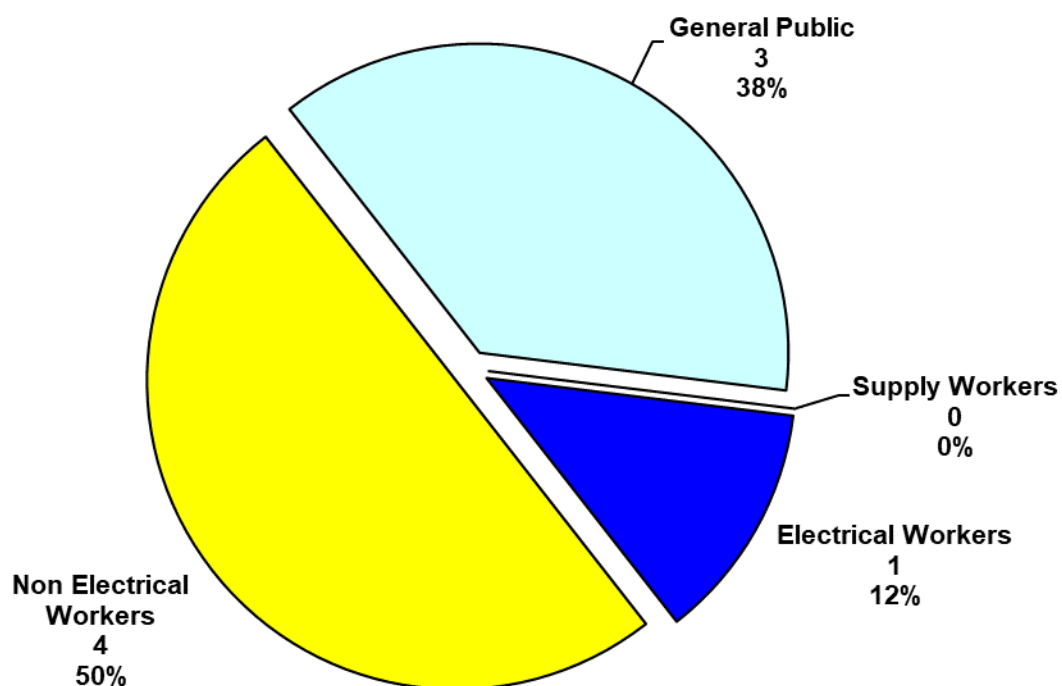
GRAPH 1.5 Sensitivity analysis for fatality rate



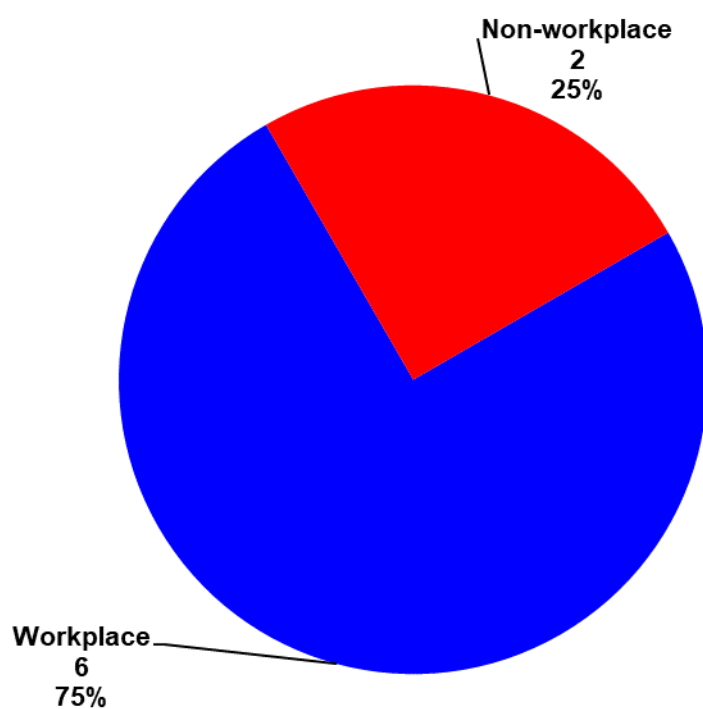
GRAPH 1.6 Trend in electrical deaths (three year moving average per million population) in Australia and New Zealand



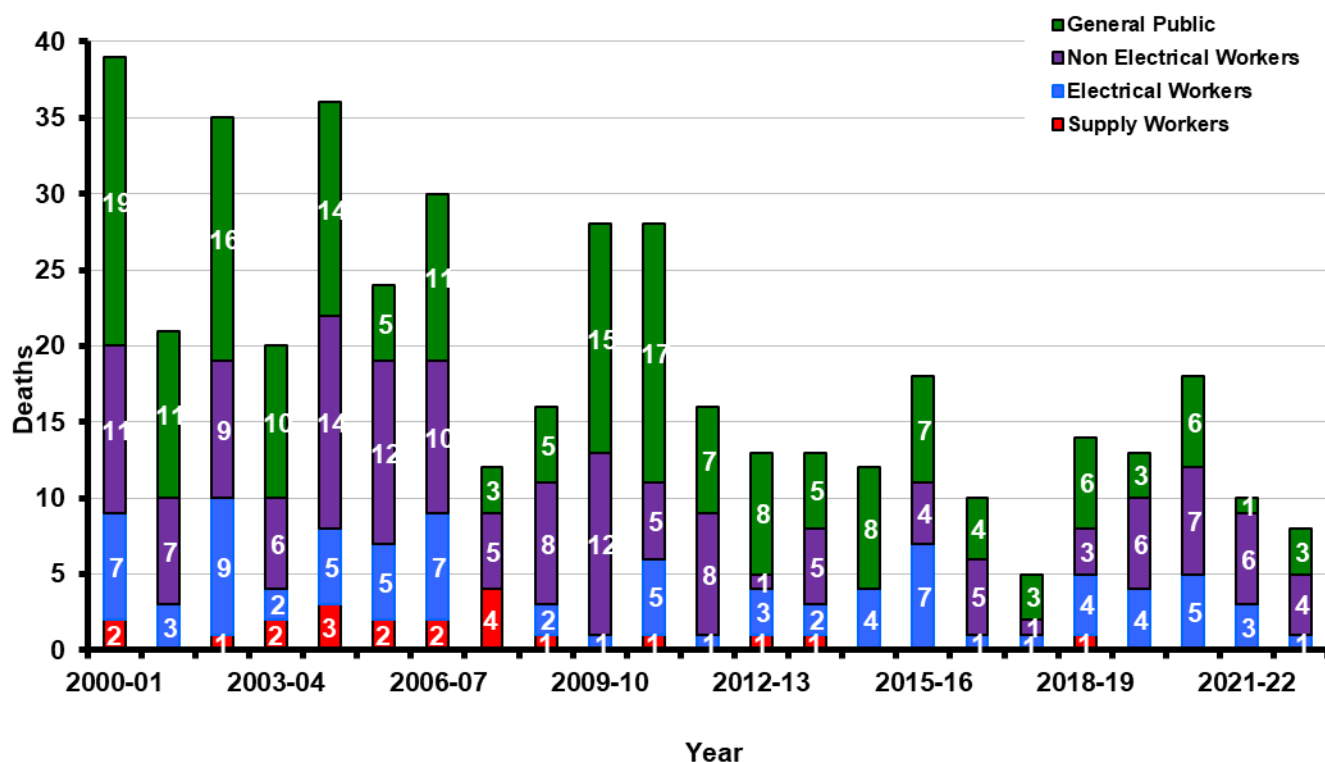
GRAPH 1.7 Australia and New Zealand victim categories – 2021-22



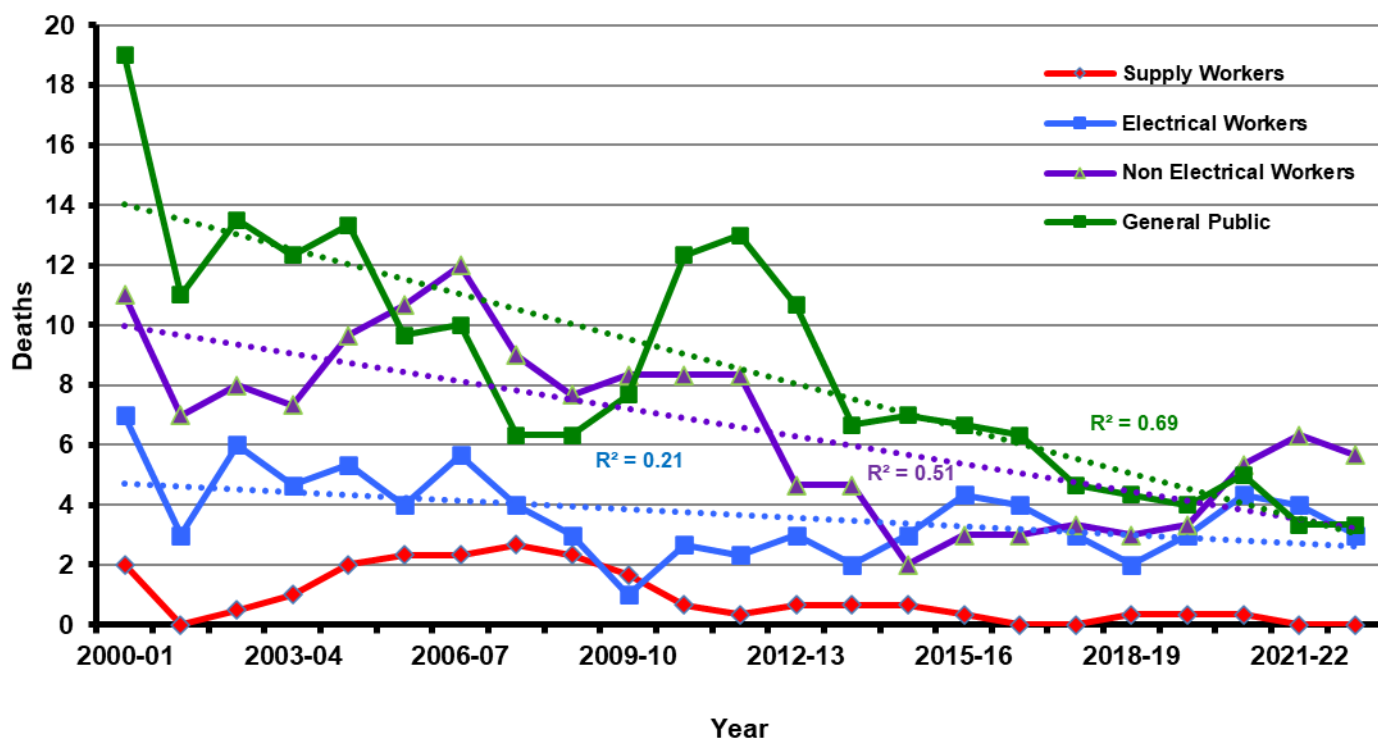
GRAPH 1.8 Electrical deaths: workplace versus non-workplace – 2021-22



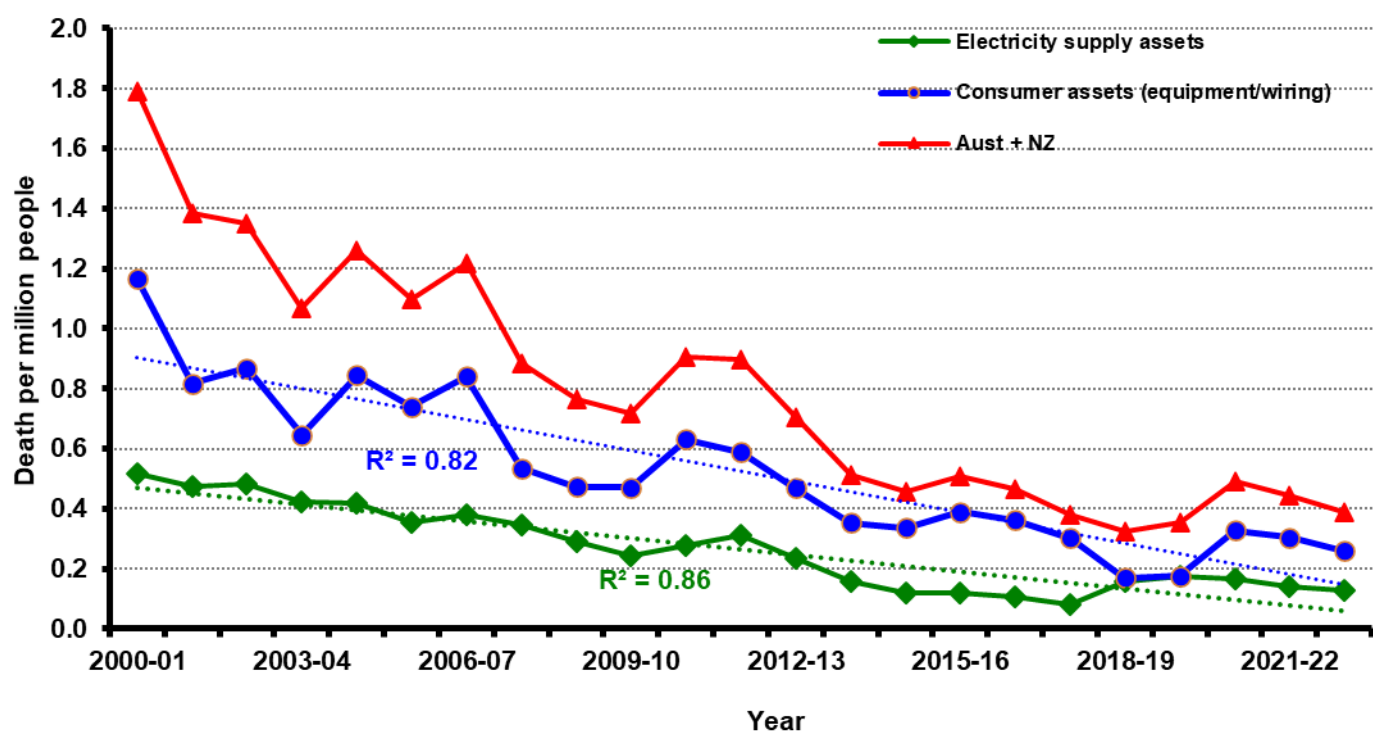
GRAPH 1.9 Electrical deaths sorted by victim categories



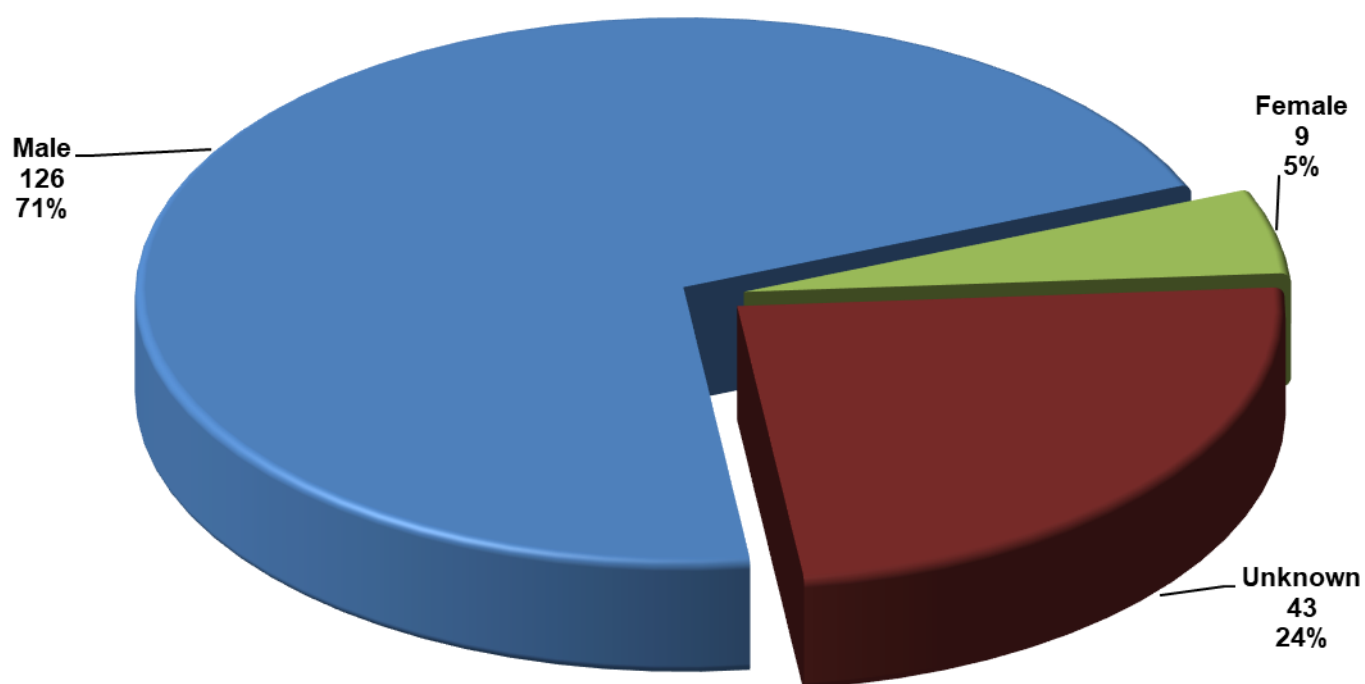
GRAPH 1.10 Trends by victim categories with three year moving average



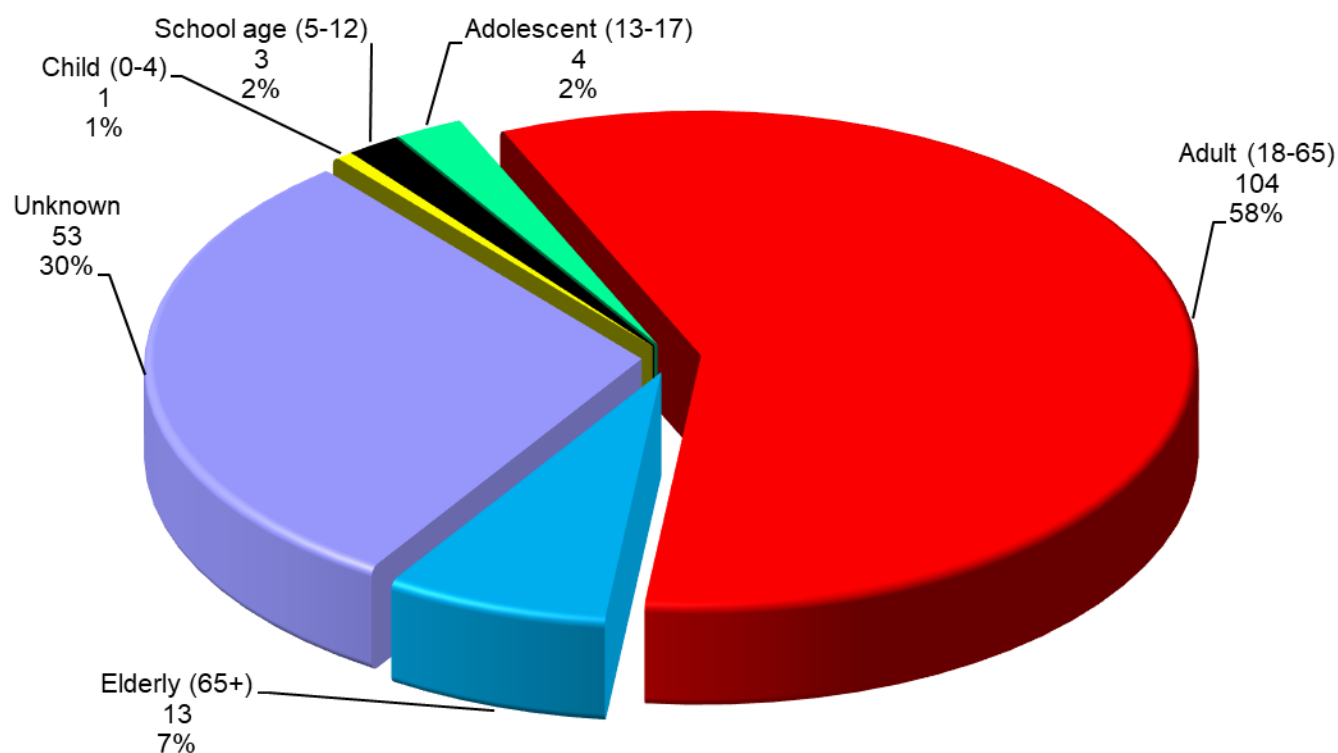
GRAPH 1.11 Trends by asset Type with three year moving average



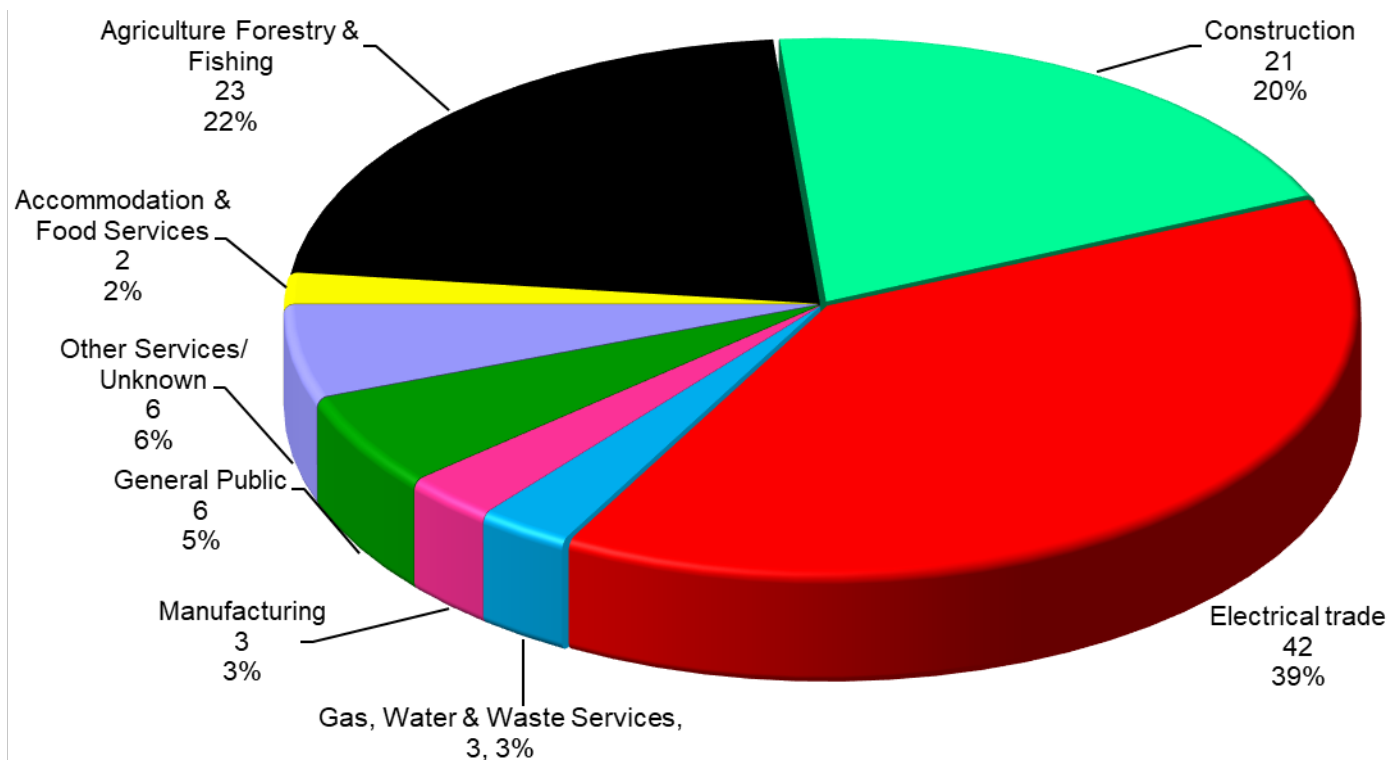
GRAPH 1.12 Victims' gender from 2010-11



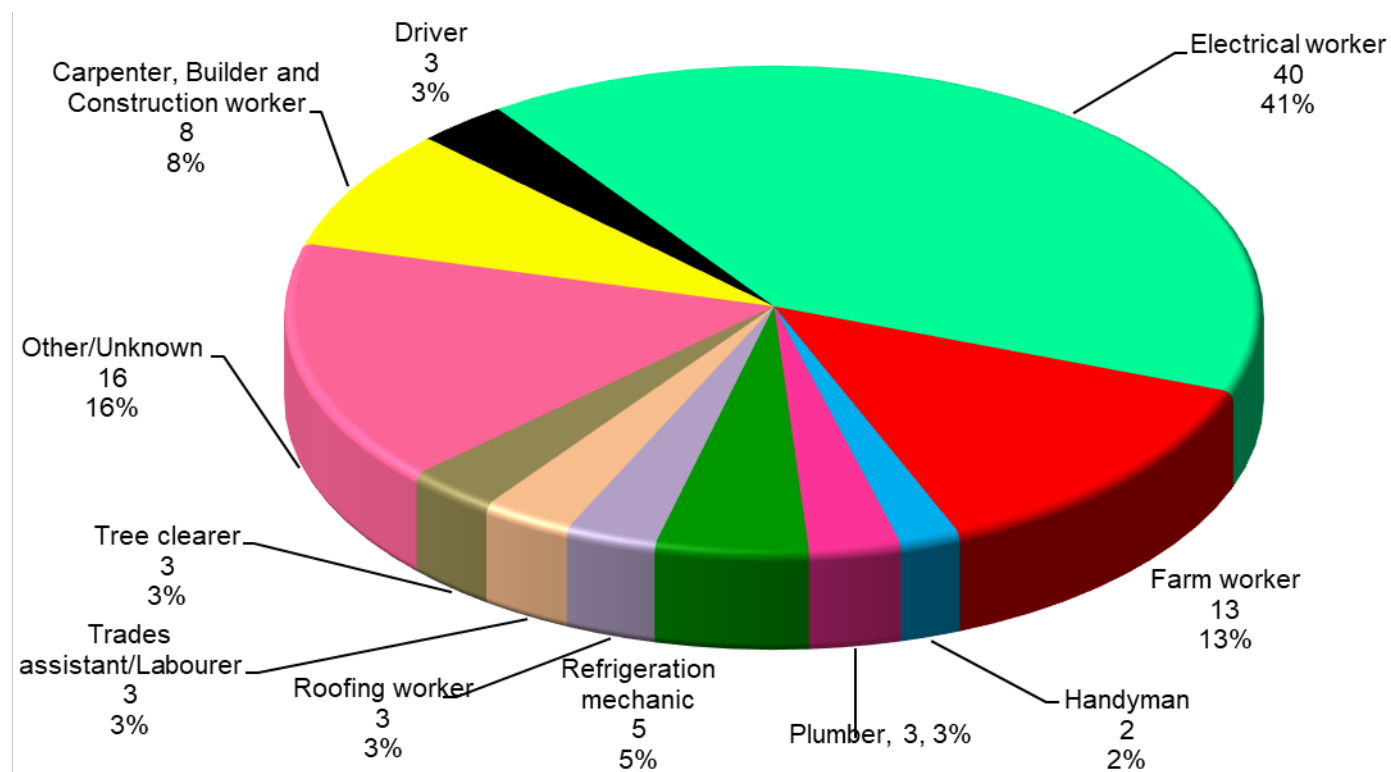
GRAPH 1.13 Victims' age from 2010-11



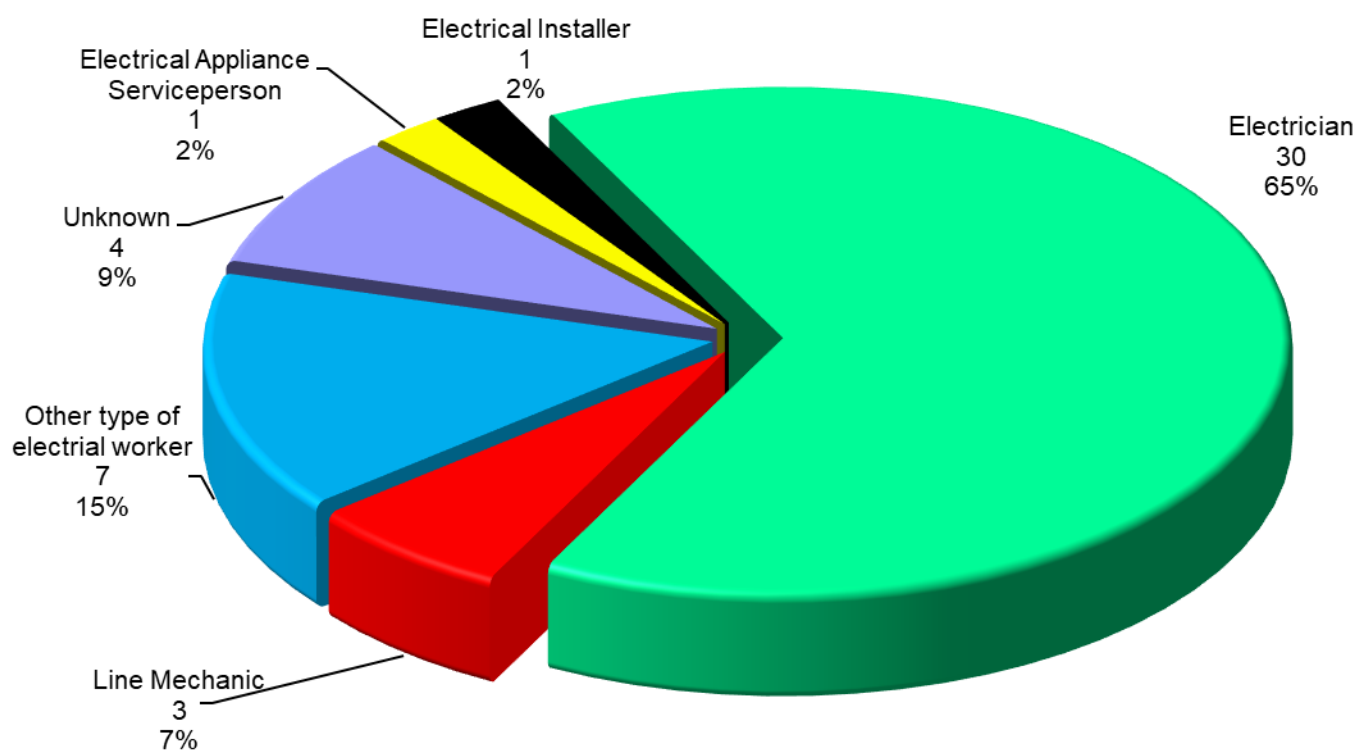
GRAPH 1.14 In industry Victim was employed from 2010-11



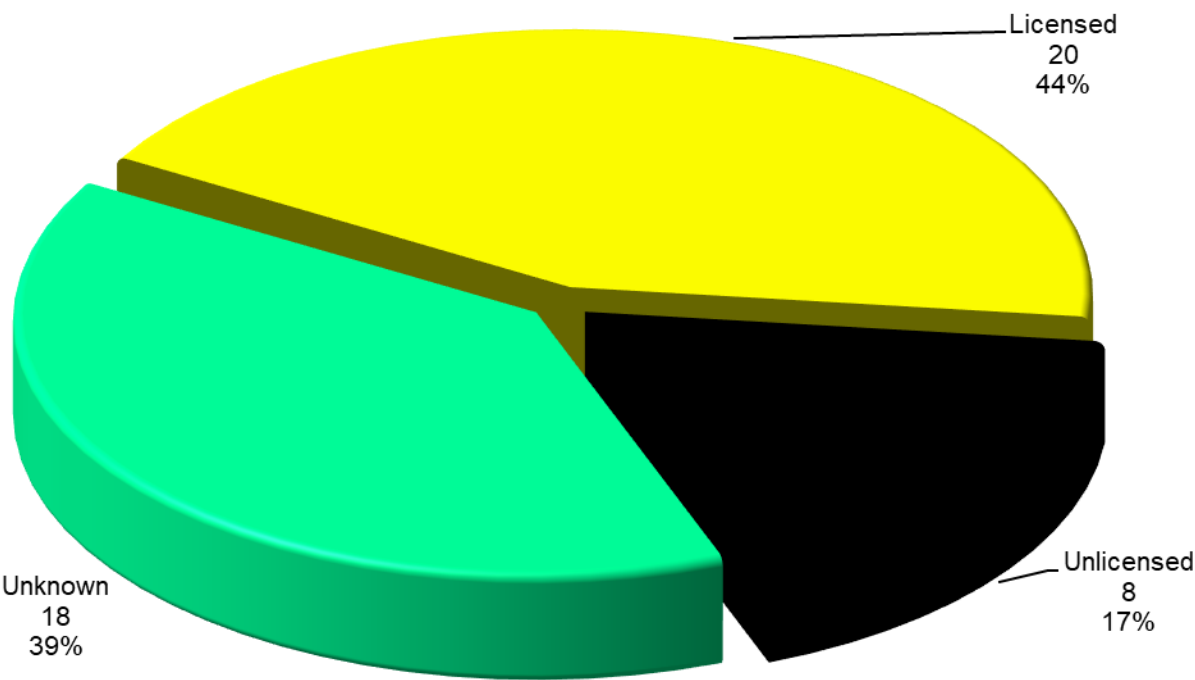
GRAPH 1.15 Victims' occupation from 2010-11



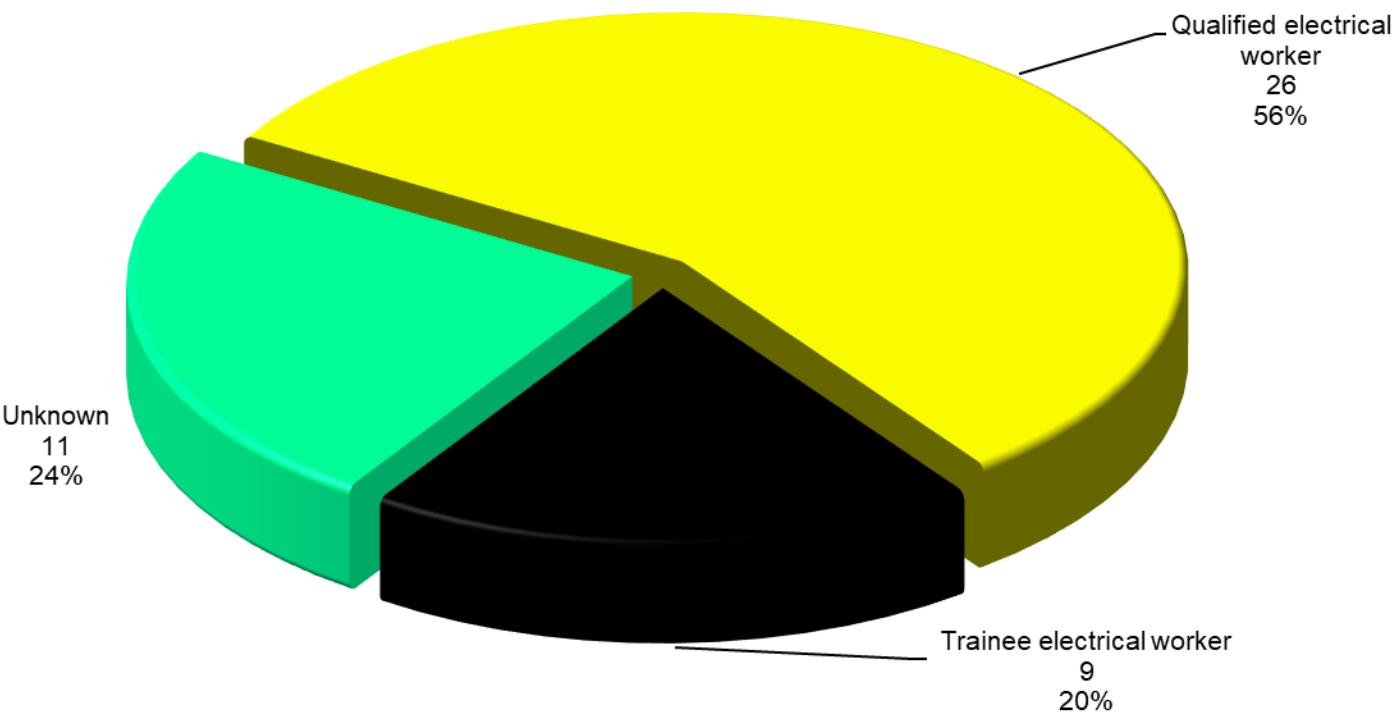
GRAPH 1.16 Electrical practitioners' category from 2010-11



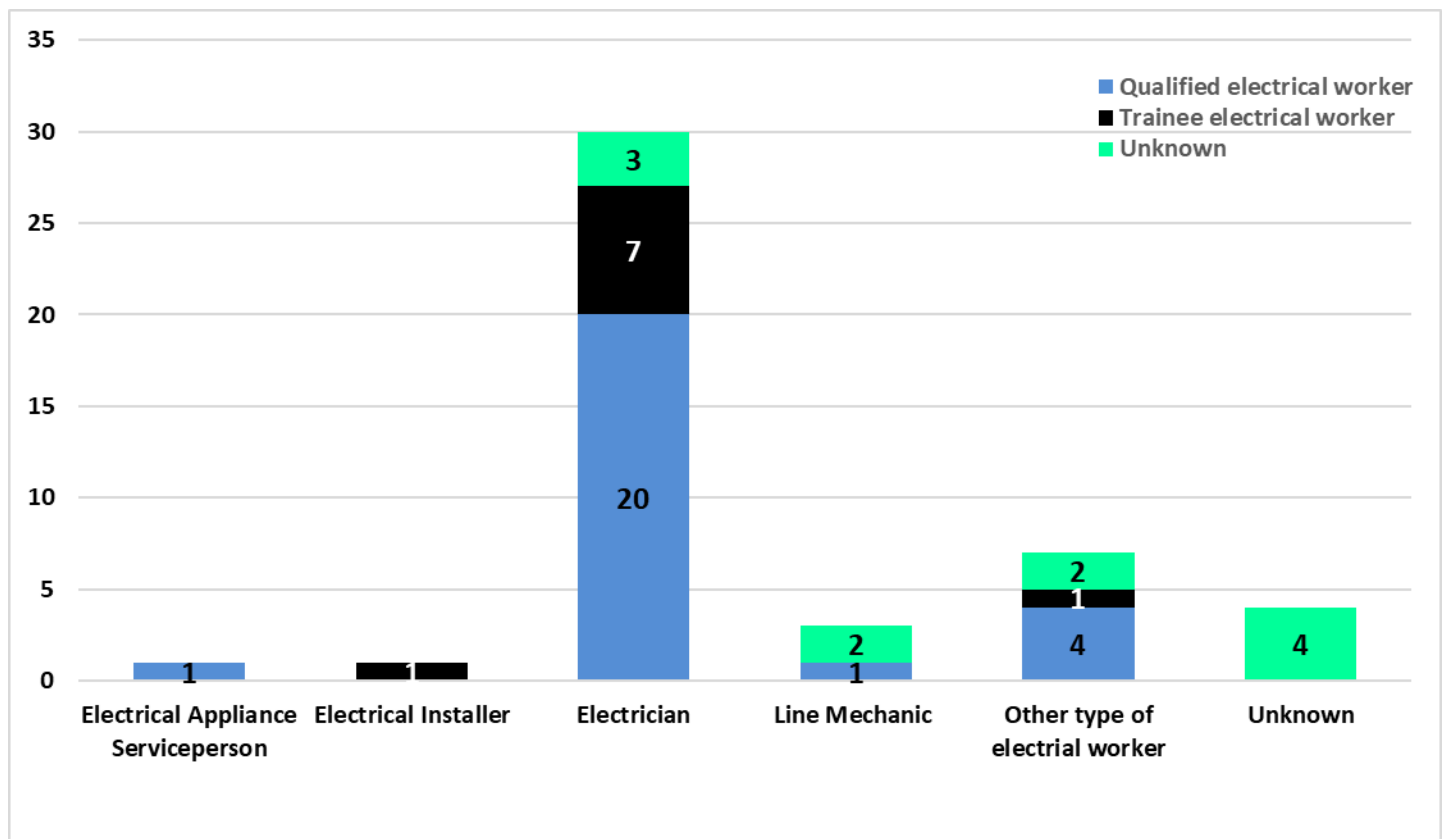
GRAPH 1.17 Electrical practitioners' practicing license stats from 2010-11



GRAPH 1.18 Electrical practitioners' qualification stats from 2010-11

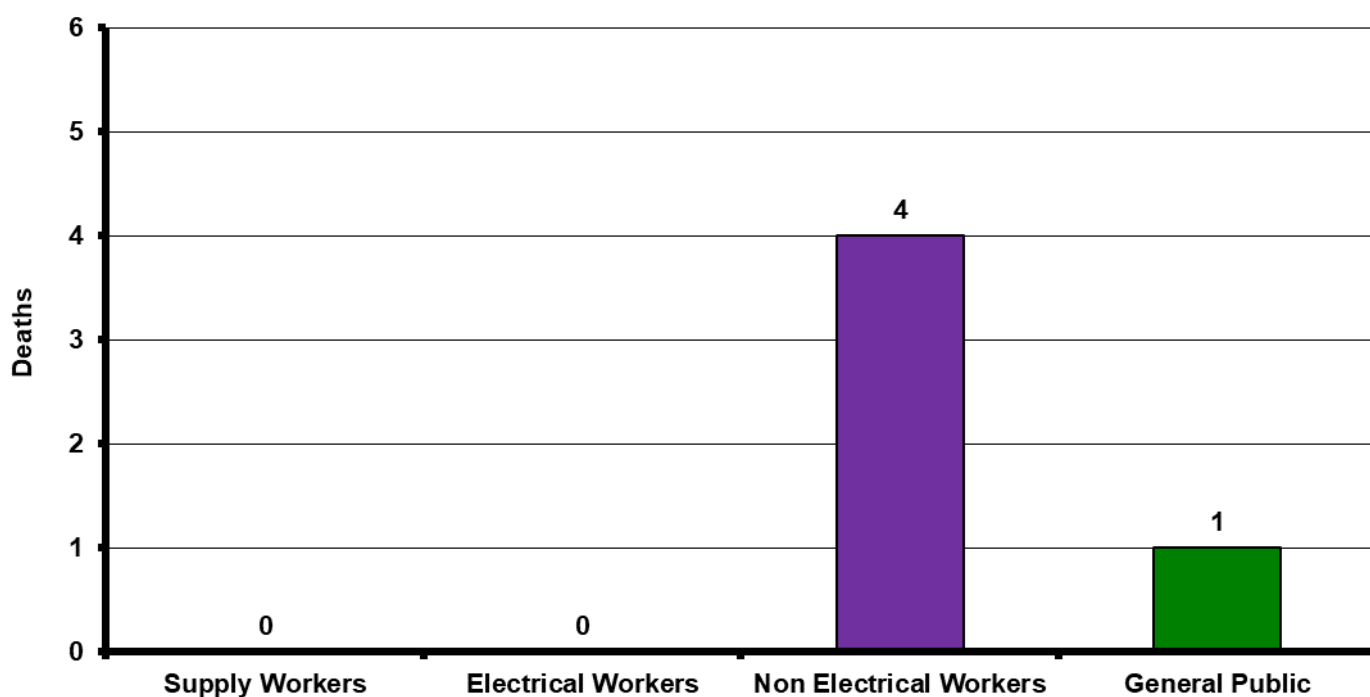


GRAPH 1.19 Practicing category & qualification stats from 2010-11

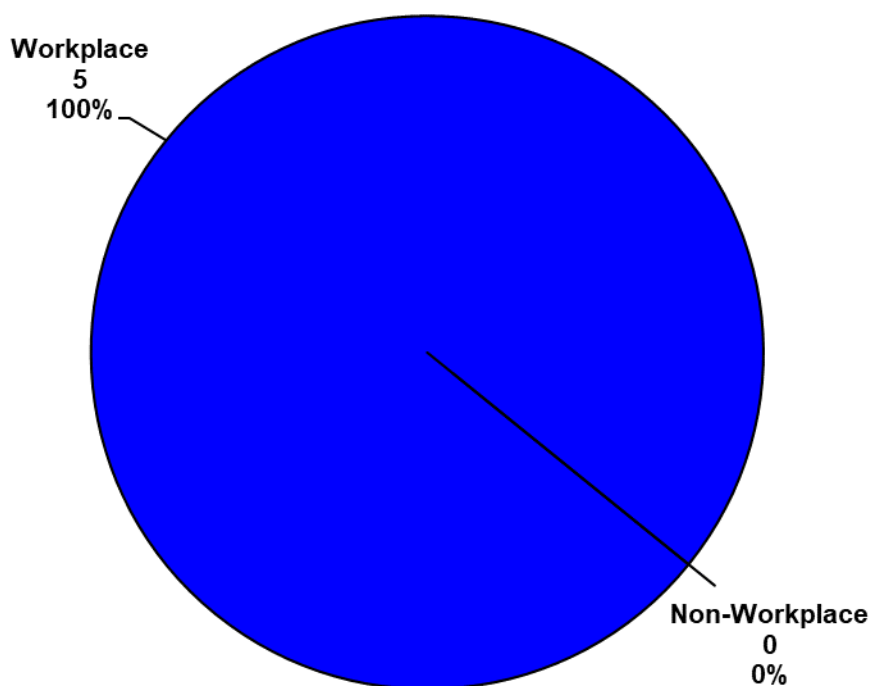


2. Fatalities involving network assets

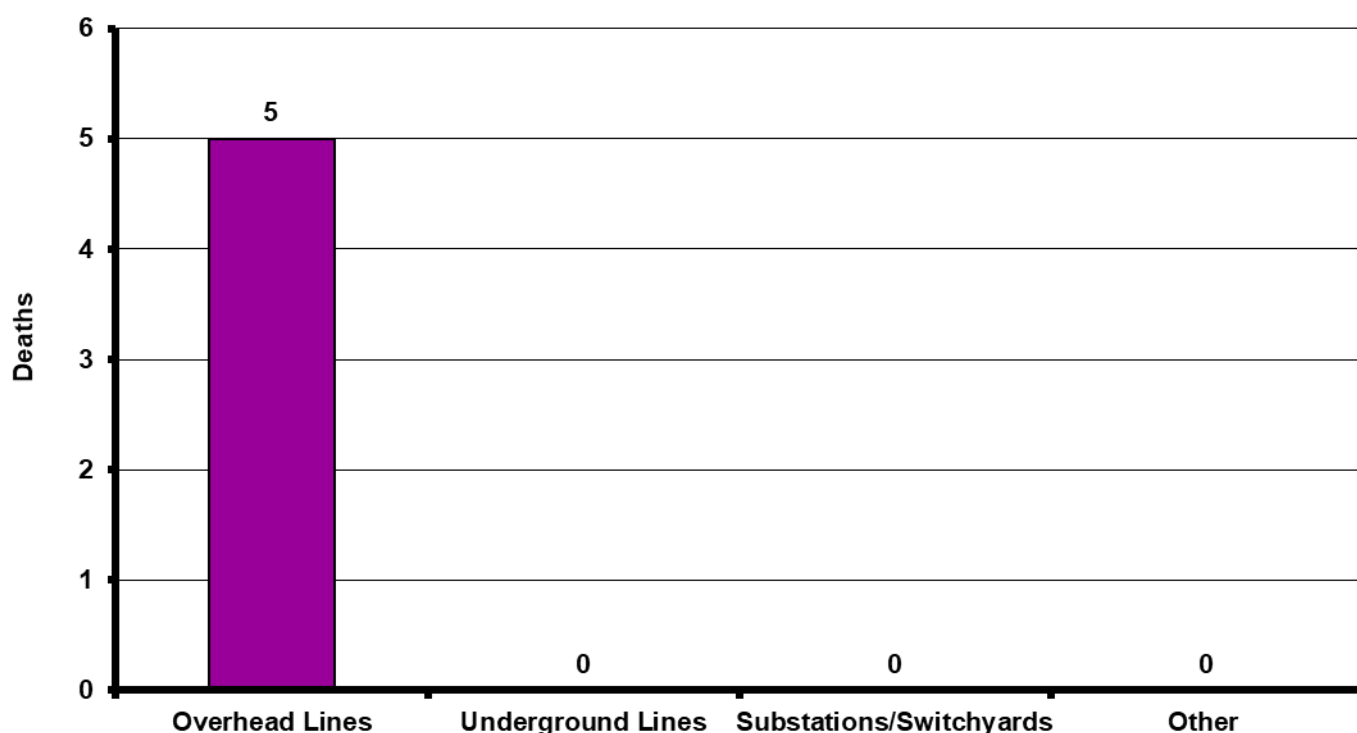
GRAPH 2.1 Deaths Involving electricity supply assets sorted by victim categories – 2022-23



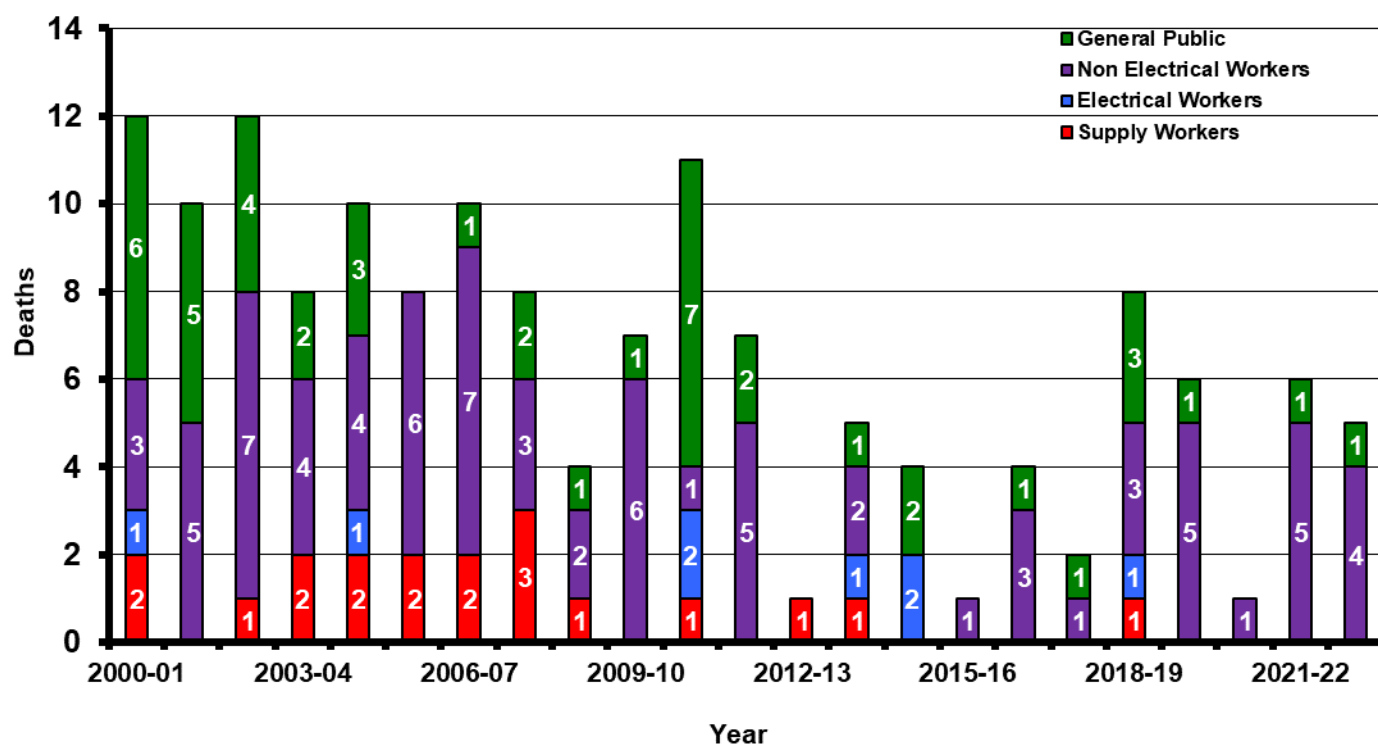
GRAPH 2.2 Deaths involving electricity supply assets: workplace versus non-workplace – 2022-23



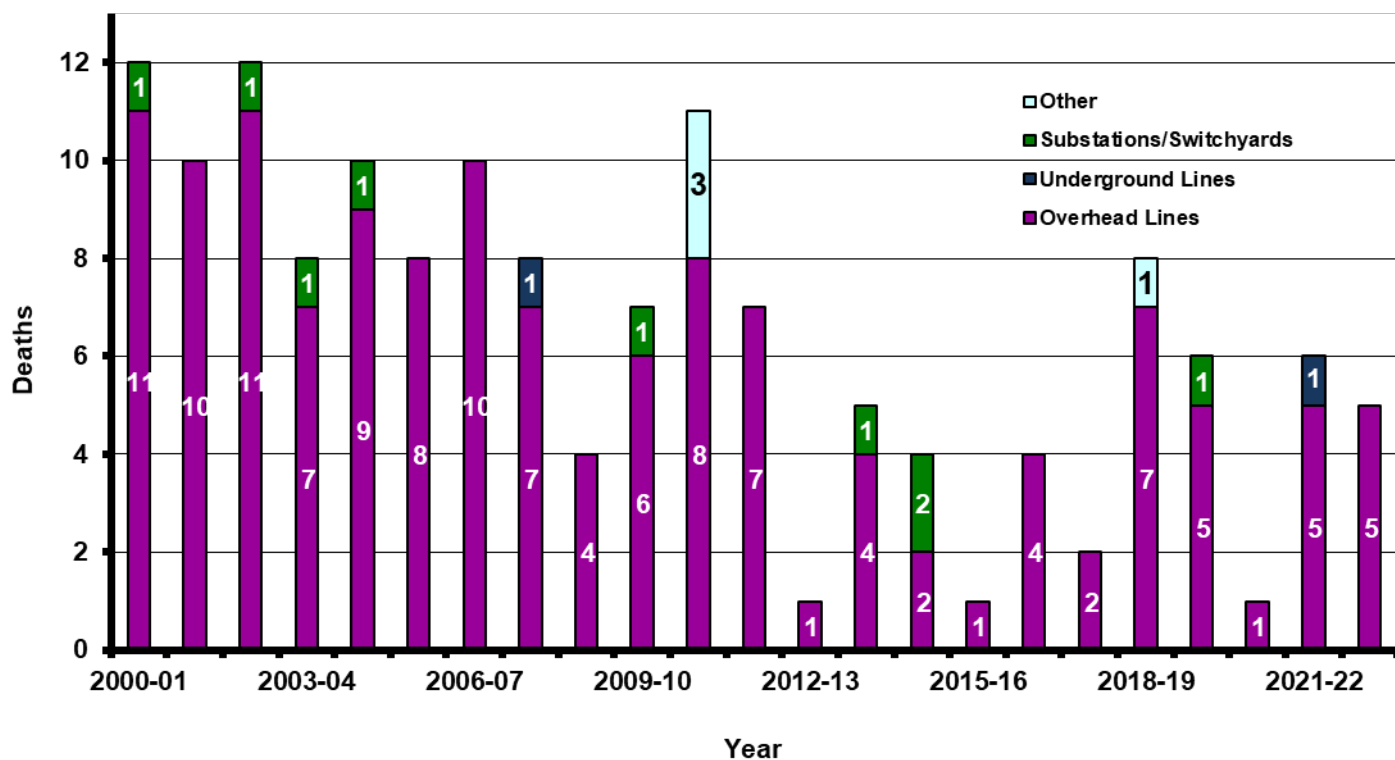
GRAPH 2.3 Deaths involving electricity supply assets sorted by asset types – 2022-23



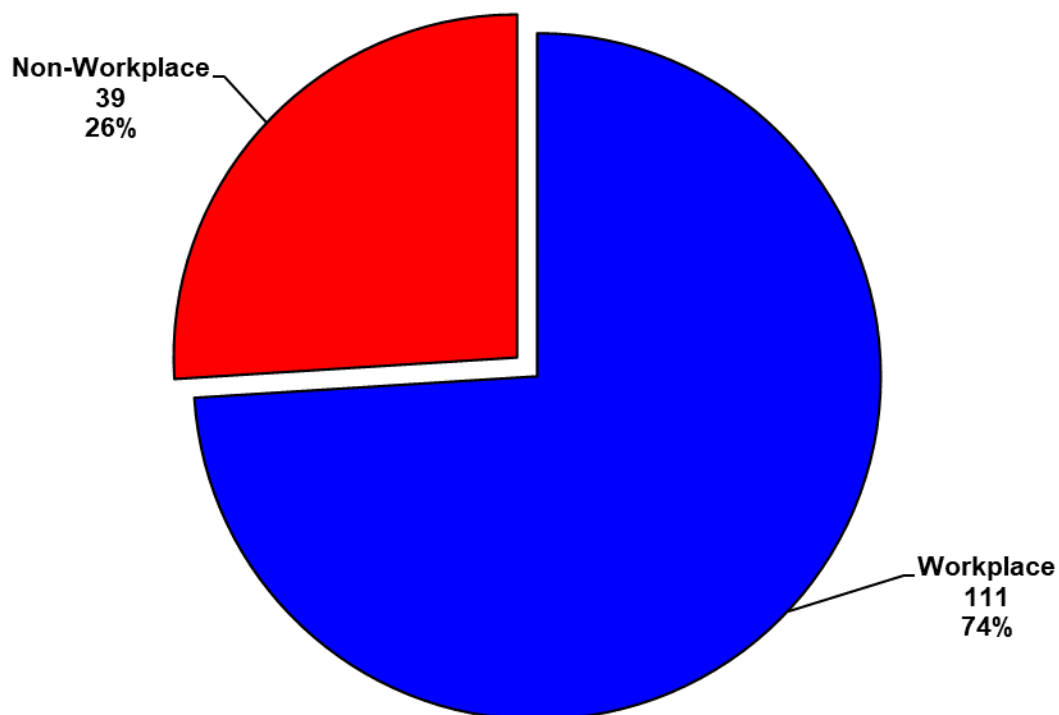
GRAPH 2.4 Deaths involving electricity supply assets by victim categories



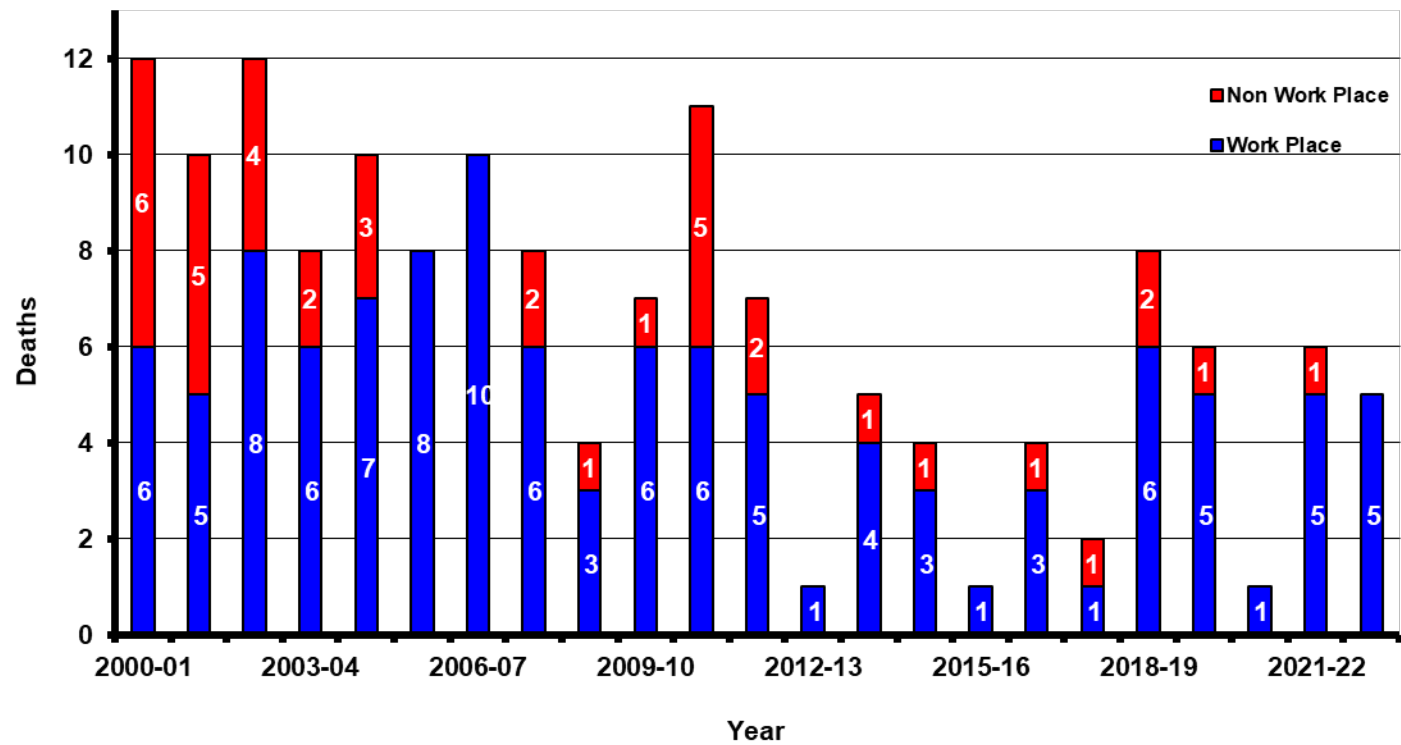
GRAPH 2.5 Deaths involving electricity supply assets sorted by asset types



GRAPH 2.6 Deaths involving electricity supply assets: workplace versus non-workplace

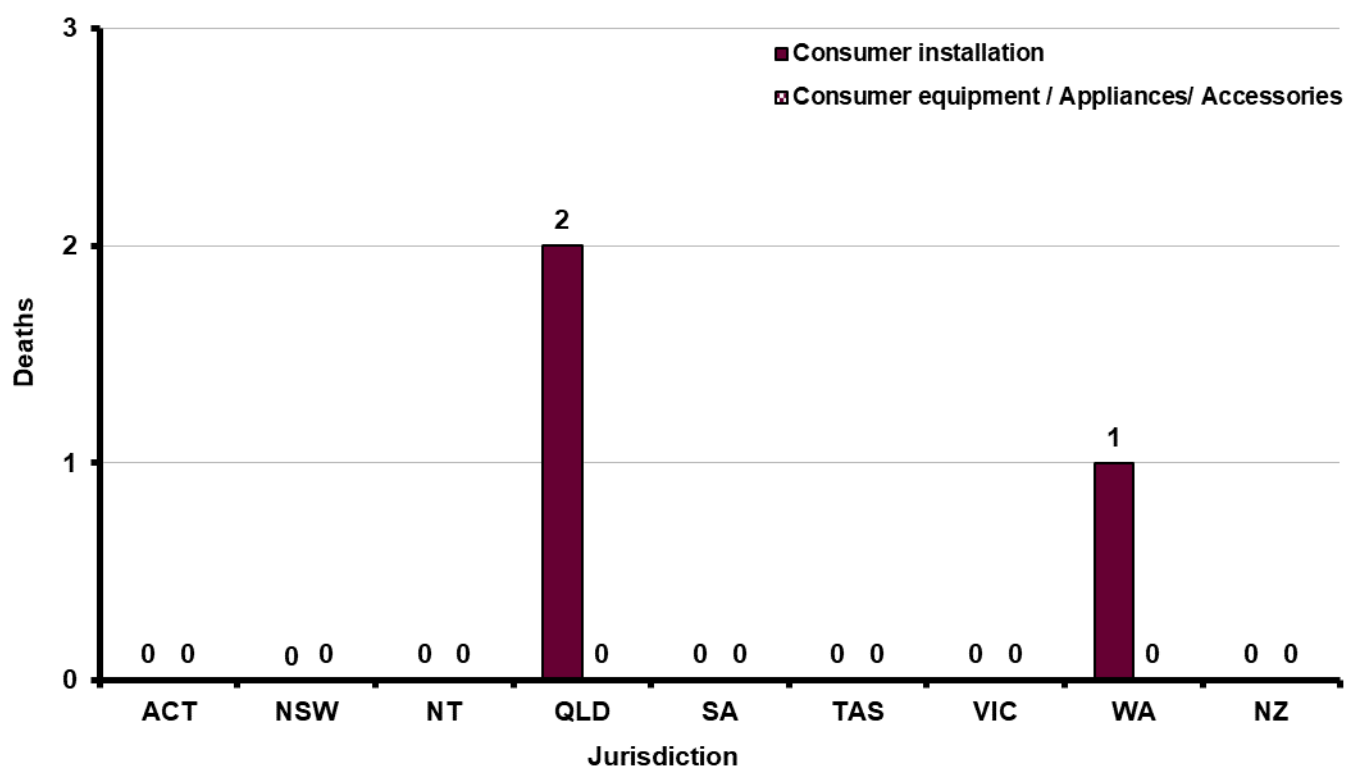


GRAPH 2.7 Deaths involving electricity supply assets: workplace versus non-workplace

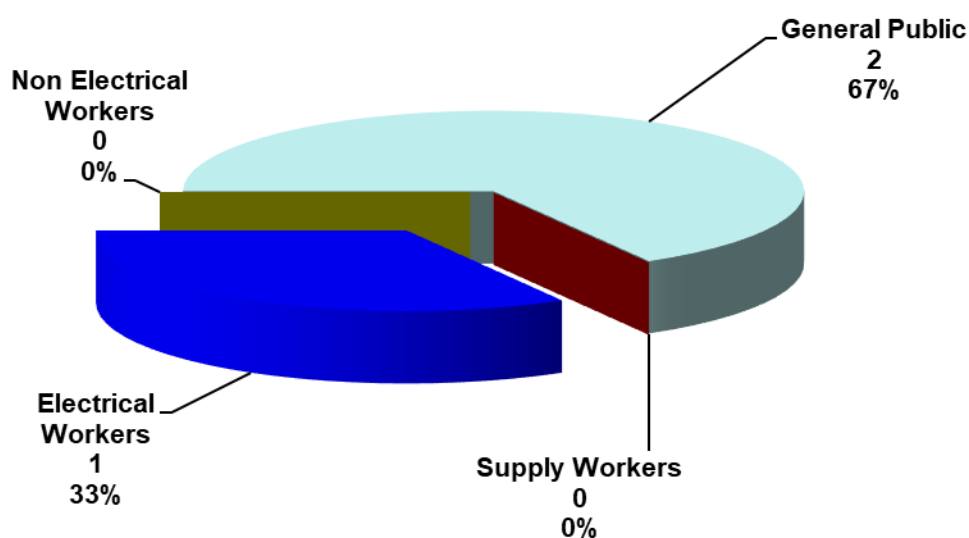


3. Fatalities involving consumer installations and equipment

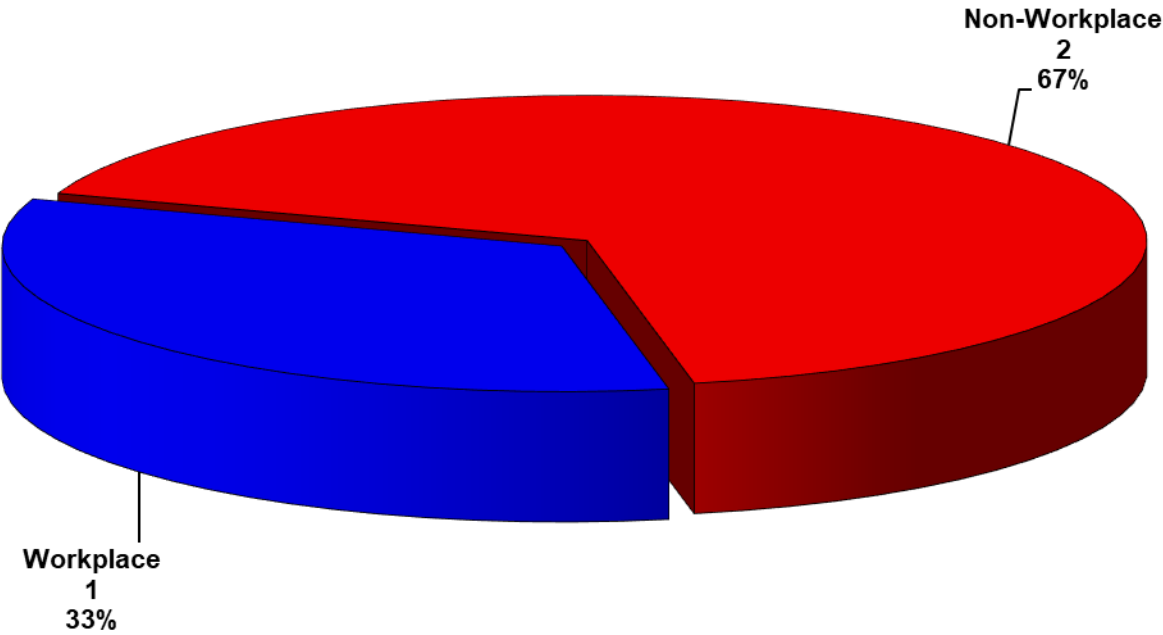
GRAPH 3.1 Electrical deaths in Australia and New Zealand involving consumer assets – 2022-23



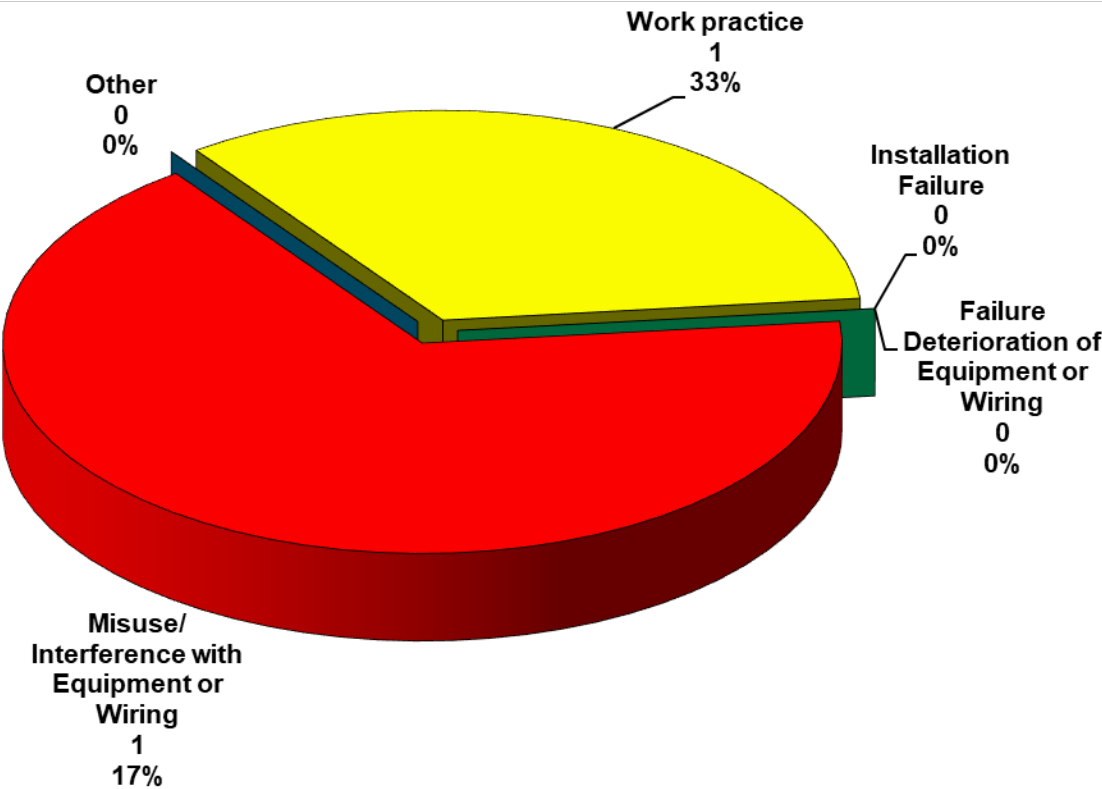
GRAPH 3.2 Deaths involving consumer assets by victim categories – 2022-23



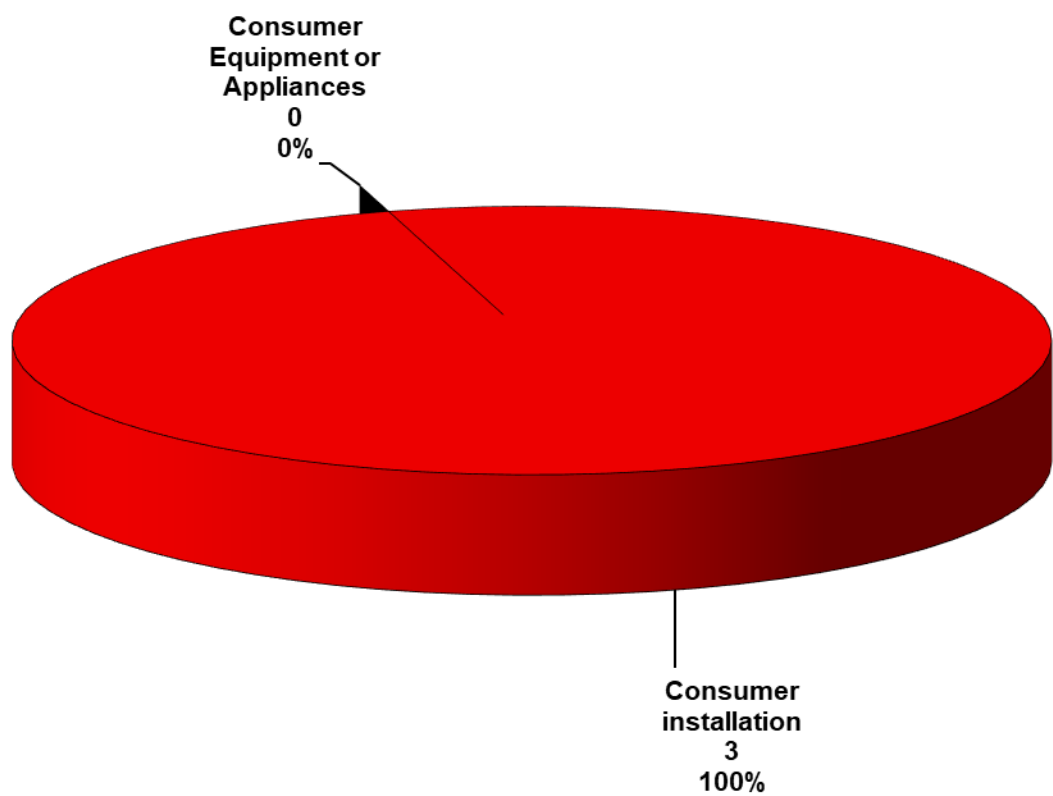
GRAPH 3.3 Deaths involving consumer installations or equipment at the workplace sorted by location – 2022-23



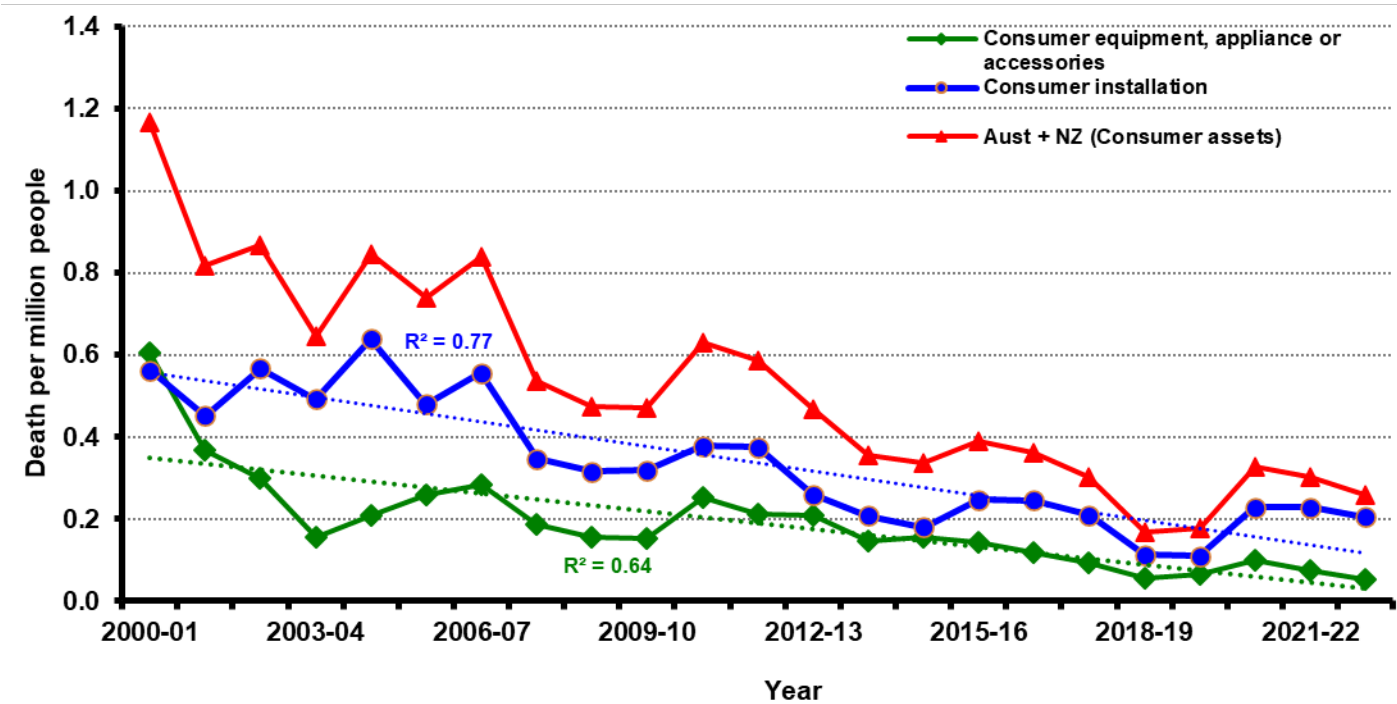
GRAPH 3.4 Contributing factors for electrical deaths involving consumer installations or equipment – 2022-23



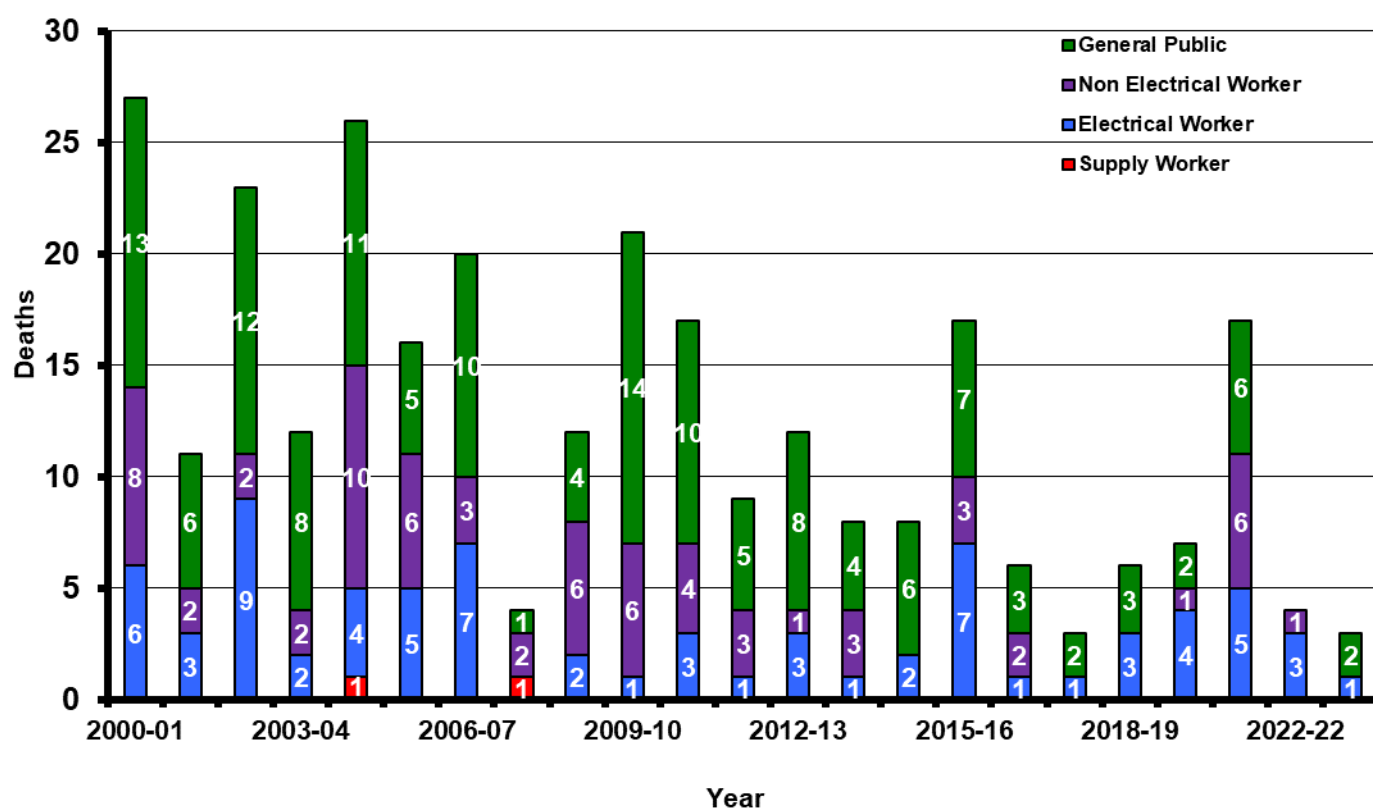
GRAPH 3.5 Deaths involving consumer installations (fixed wiring) or equipment -2022-23



GRAPH 3.6 Trends by asset type with three year moving average



GRAPH 3.7 Deaths involving consumer assets by victim categories



4. Fatal electrical accidents since July 2000

YEAR	ACT	NSW	NT	QLD	SA	TAS	VIC	WA	AUST	NZ	TOTAL
2000-01	0	9	2	10	7	0	5	4	37	2	39
2001-02	1	3	1	3	2	3	1	2	16	5	21
2002-03	1	13	0	1	1	4	0	7	27	8	35
2003-04	0	10	1	2	1	0	1	3	18	2	20
2004-05	0	11	2	8	2	1	1	4	29	7	36
2005-06	0	6	3	3	0	0	6	3	21	3	24
2006-07	0	3	1	6	1	2	2	5	20	10	30
2007-08	0	0	0	5	0	0	1	1	7	5	12
2008-09	0	4	0	3	1	0	1	4	13	3	16
2009-10	0	5	2	5	2	0	9	2	25	3	28
2010-11	0	7	1	6	1	1	4	4	24	4	28
2011-12	1	6	0	4	1	0	1	0	13	3	16
2012-13	0	3	0	3	2	0	1	2	11	2	13
2013-14	0	5	1	1	1	0	2	1	11	2	13
2014-15	0	2	1	3	2	0	1	2	11	1	12
2015-16	0	7	0	2	0	1	5	1	16	2	18
2016-17	0	3	0	5	0	0	2	0	10	0	10
2017-18	0	0	0	0	1	0	3	1	5	0	5
2018-19	0	3	1	4	0	0	4	0	12	2	14
2019-20	0	1	1	1	0	0	3	3	9	4	13
2020-21	0	0	1	3	3	0	5	2	14	4	18
2021-22	0	4	0	4	0	0	2	0	9	0	10
2021-22	0	0	0	6	0	0	0	1	7	1	8
Total	3	105	18	88	28	12	60	52	366	71	439

5. Summary of electrical fatality reports 2022-23

ELECTRICITY DISTRIBUTOR/SUPPLY AUTHORITY EQUIPMENT

Legend:

A Supply worker
B Electrical worker
C Non-electrical worker
D General public

	ACT				NSW				NT				QLD				SA			
	A	B	C	D	A	B	C	D	A	B	C	D	A	B	C	D	A	B	C	D
Overhead Line	0	0	0	0	0	0	0	0	0	0	0	0	0	0	3	1	0	0	0	0
Underground Line	0	0	0	0	0	0	0	0	0	0	0	0	0	0	0	0	0	0	0	0
Substation/Switchyard	0	0	0	0	0	0	0	0	0	0	0	0	0	0	0	0	0	0	0	0
Other	0	0	0	0	0	0	0	0	0	0	0	0	0	0	0	0	0	0	0	0
TOTAL	0	0	0	0	0	0	0	0	0	0	0	0	0	0	3	1	0	0	0	0
TOTAL	0				0				0				4				0			

	TAS				VIC				WA				NZ				TOTAL				Total
	A	B	C	D	A	B	C	D	A	B	C	D	A	B	C	D	A	B	C	D	
Overhead Line	0	0	0	0	0	0	0	0	0	0	0	0	0	0	1	0	0	0	4	1	5
Underground Line	0	0	0	0	0	0	0	0	0	0	0	0	0	0	0	0	0	0	0	0	0
Substation/Switchyard	0	0	0	0	0	0	0	0	0	0	0	0	0	0	0	0	0	0	0	0	0
Other	0	0	0	0	0	0	0	0	0	0	0	0	0	0	0	0	0	0	0	0	0
TOTAL	0	0	0	0	0	0	0	0	0	0	0	0	0	0	1	0	0	0	4	1	5
TOTAL	0				0				0				1				5				

CONSUMER INSTALLATIONS (installation of fixed equipment)

Legend:

A Supply worker
B Electrical worker
C Non-electrical worker
D General public

	ACT				NSW				NT				QLD				SA			
	A	B	C	D	A	B	C	D	A	B	C	D	A	B	C	D	A	B	C	D
Work practice	0	0	0	0	0	0	0	0	0	0	0	0	0	0	0	0	0	0	0	0
Installation Failure	0	0	0	0	0	0	0	0	0	0	0	0	0	0	0	0	0	0	0	0
Failure Deterioration of Equipment or Wiring	0	0	0	0	0	0	0	0	0	0	0	0	0	0	0	0	0	0	0	0
Misuse/Interference with Equipment or Wiring	0	0	0	0	0	0	0	0	0	0	0	0	0	0	0	2	0	0	0	0
Other	0	0	0	0	0	0	0	0	0	0	0	0	0	0	0	0	0	0	0	0
TOTAL	0	0	0	0	0	0	0	0	0	0	0	0	0	0	0	2	0	0	0	0
TOTAL	0				0				0				2				0			

	TAS				VIC				WA				NZ				TOTAL				Total
	A	B	C	D	A	B	C	D	A	B	C	D	A	B	C	D	A	B	C	D	
Work practice	0	0	0	0	0	0	0	0	0	1	0	0	0	0	0	0	0	1	0	0	1
Installation Failure	0	0	0	0	0	0	0	0	0	0	0	0	0	0	0	0	0	0	0	0	0
Failure Deterioration of Equipment or Wiring	0	0	0	0	0	0	0	0	0	0	0	0	0	0	0	0	0	0	0	0	0
Misuse/Interference with Equipment or Wiring	0	0	0	0	0	0	0	0	0	0	0	0	0	0	0	0	0	0	0	2	2
Other	0	0	0	0	0	0	0	0	0	0	0	0	0	0	0	0	0	0	0	0	0
TOTAL	0	0	0	0	0	0	0	0	0	1	0	0	0	0	0	0	0	1	0	2	3
TOTAL	0				0				1				0				3				

CONSUMER EQUIPMENT (Appliance or Accessories)

Legend:

A Supply worker
B Electrical worker
C Non-electrical worker
D General public

	ACT				NSW				NT				QLD				SA			
	A	B	C	D	A	B	C	D	A	B	C	D	A	B	C	D	A	B	C	D
Work practice	0	0	0	0	0	0	0	0	0	0	0	0	0	0	0	0	0	0	0	0
Installation Failure	0	0	0	0	0	0	0	0	0	0	0	0	0	0	0	0	0	0	0	0
Failure Deterioration of Equipment or Wiring	0	0	0	0	0	0	0	0	0	0	0	0	0	0	0	0	0	0	0	0
Misuse/Interference with Equipment or Wiring	0	0	0	0	0	0	0	0	0	0	0	0	0	0	0	0	0	0	0	0
Other	0	0	0	0	0	0	0	0	0	0	0	0	0	0	0	0	0	0	0	0
TOTAL	0	0	0	0	0	0	0	0	0	0	0	0	0	0	0	0	0	0	0	0
TOTAL	0				0				0				0				0			

	TAS				VIC				WA				NZ				TOTAL				Total
	A	B	C	D	A	B	C	D	A	B	C	D	A	B	C	D	A	B	C	D	
Work practice	0	0	0	0	0	0	0	0	0	0	0	0	0	0	0	0	0	0	0	0	0
Installation Failure	0	0	0	0	0	0	0	0	0	0	0	0	0	0	0	0	0	0	0	0	0
Failure Deterioration of Equipment or Wiring	0	0	0	0	0	0	0	0	0	0	0	0	0	0	0	0	0	0	0	0	0
Misuse/Interference with Equipment or Wiring	0	0	0	0	0	0	0	0	0	0	0	0	0	0	0	0	0	0	0	0	0
Other	0	0	0	0	0	0	0	0	0	0	0	0	0	0	0	0	0	0	0	0	0
TOTAL	0	0	0	0	0	0	0	0	0	0	0	0	0	0	0	0	0	0	0	0	0
TOTAL	0				0				0				0				0				